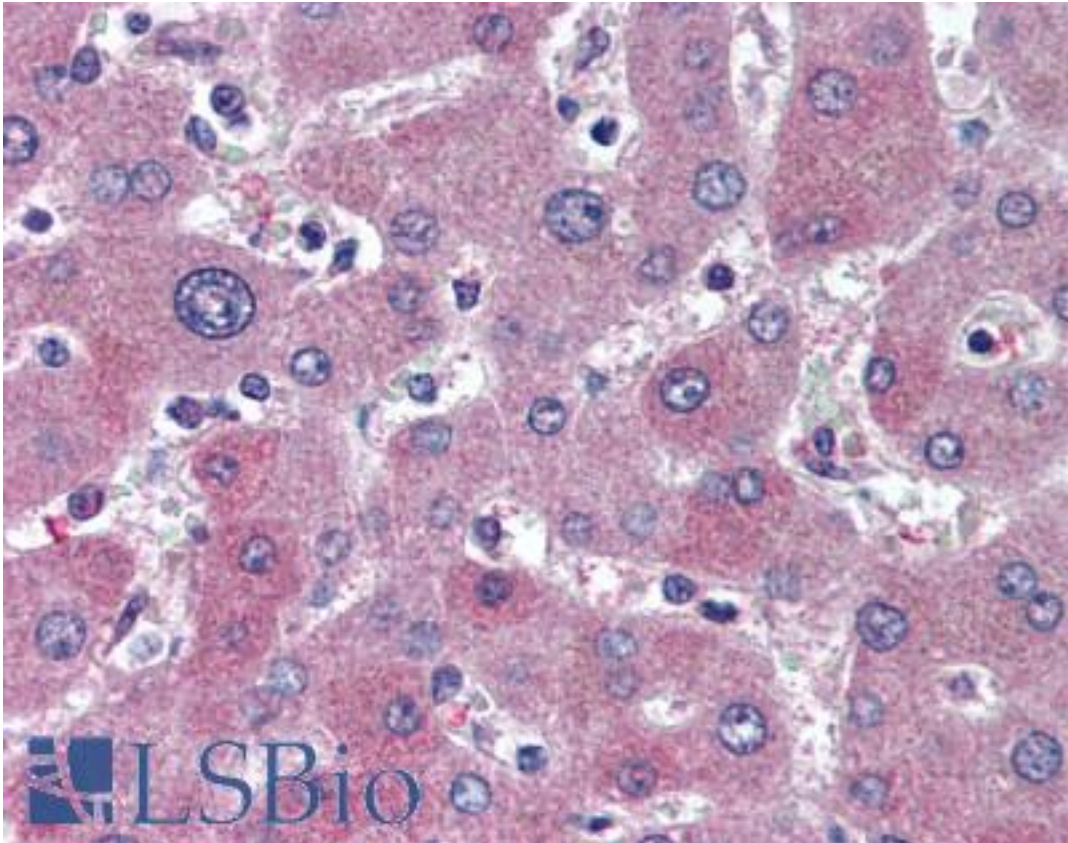


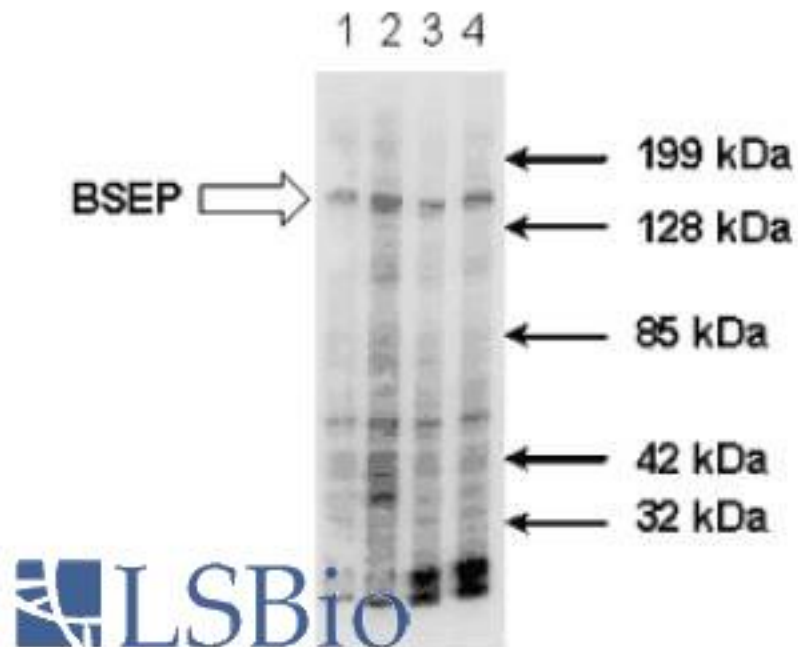
ABCB11 / BSEP Mouse anti-Human Monoclonal (aa705-718) Antibody - LS-B2170 - LSBio	
<b>CatalogID:</b>	LS-B2170
<b>Validation:</b>	This antibody replaces catalog number LS-C4240. It has been validated for use in the following assays: IHC-P.
<b>Target:</b>	ATP-binding cassette, sub-family B (MDR/TAP), member 11 (ABCB11)
<b>Synonyms:</b>	ABCB11 Antibody, ABC16 Antibody, Bile salt export pump Antibody, BSEP Antibody, PGY4 Antibody, Sister p-glycoprotein Antibody, BRIC2 Antibody, PFIC-2 Antibody, PFIC2 Antibody, SPGP Antibody
<b>Family / Subfamily:</b>	Transporter / ATP-binding cassette - ABCB/MDR
<b>Host</b>	ABCB11 antibody was produced in Mouse
<b>Clonality:</b>	Monoclonal
<b>Isotype:</b>	IgG1
<b>Immunogen Species:</b>	ABCB11 / BSEP antibody was raised against Human
<b>Antigen Type:</b>	Synthetic peptide
<b>Immunogen:</b>	ABCB11 / BSEP antibody was raised against synthetic peptide corresponding to aa 705-718 (Y705LVHEPPLAVVDHK718) of human BSEP (bile salt export pump). Percent identity by BLAST analysis: Human, Gorilla, Gibbon, Monkey, Panda (100%); Marmoset, Dog (93%).
<b>Specificity:</b>	Recognizes human BSEP. Does not cross-react with human P-glycoprotein.
<b>Epitope:</b>	aa705-718
<b>Reactivity:</b>	Human, Gorilla, Gibbon
<b>Predicted Reactivity:</b>	Monkey, Dog
<b>Purification:</b>	Protein G purified
<b>Presentation:</b>	0.7% BSA, 100nM sodium azide
<b>Recommended Storage:</b>	Long term: -20°C; Short term: +4°C. Avoid repeat freeze-thaw cycles.
<b>Usage Summary:</b>	Immunohistochemistry: LS-B2170 was validated for use in immunohistochemistry on a panel of 21 formalin-fixed, paraffin-embedded (FFPE) human tissues after heat induced antigen retrieval in pH 6.0 citrate buffer. After incubation with the primary antibody, slides were incubated with biotinylated secondary antibody, followed by alkaline phosphatase-streptavidin and chromogen. The stained slides were evaluated by a pathologist to confirm staining specificity. The optimal working concentration for LS-B2170 was determined to be 5 ug/ml. Western Blot: 1:50-1:200 Immunocytochemistry: Cytospin preparations Optimal dilutions to be determined by the researcher.
<b>Uses:</b>	IHC - Paraffin (5 µg/ml), ICC, Western blot (Optimal dilution to be determined by the researcher)
<b>Size:</b>	50 µg
<b>Concentration:</b>	1 mg/ml

**Immunohistochemistry Image:**



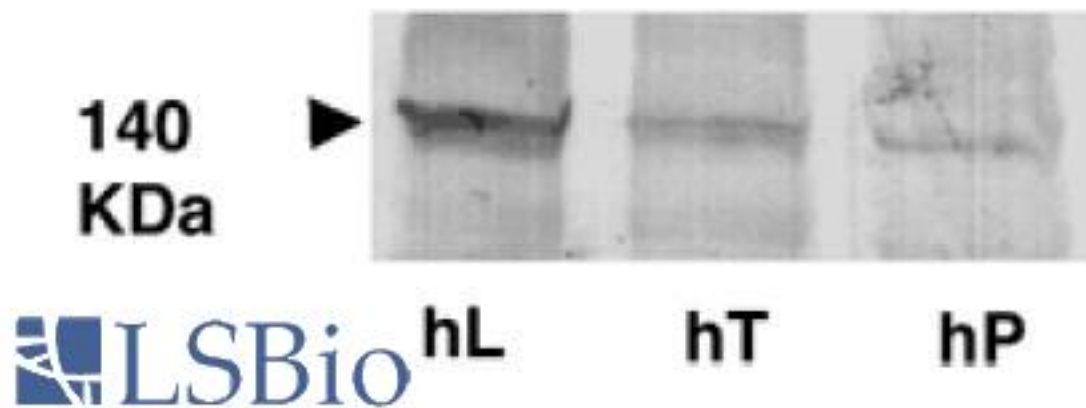
Anti-ABCB11 / BSEP antibody IHC of human liver. Immunohistochemistry of formalin-fixed, paraffin-embedded tissue after heat-induced antigen retrieval. Antibody LS-B2170 concentration 5 ug/ml.

Western Blot Image:



WB staining of crude plasma membrane purified from human liver tissue collected by fine needle biopsy.

Western Blot Image:



Western blot of crude membranes isolated from human liver (hL), human.

Requested From:

Japan

Laboratory Reagent For In Vitro Research Use Only

Not for resale without prior written consent from LifeSpan BioSciences, Inc.

Created on 9/23/2014

© 2014 LifeSpan BioSciences