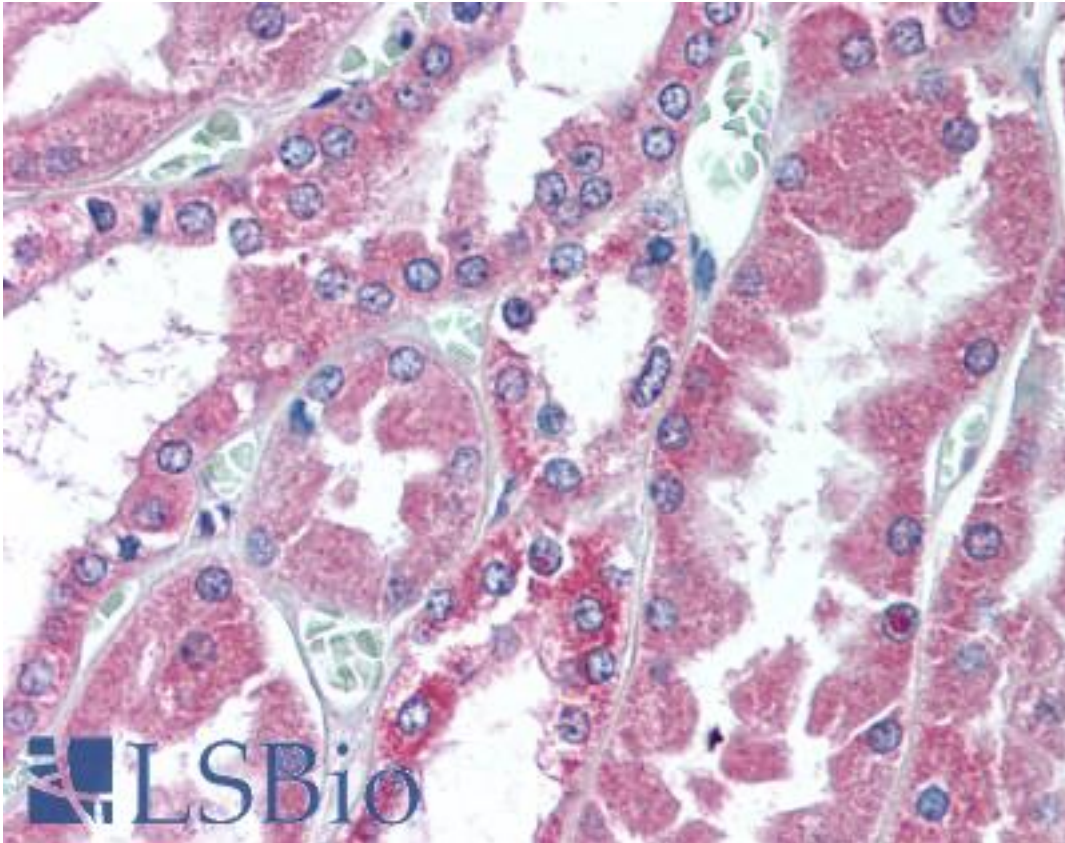


COL18A1 / Endostatin Rabbit anti-Mouse Polyclonal (C-Terminus) Antibody - LS-B2163 - LSBio	
<b>CatalogID:</b>	LS-B2163
<b>Validation:</b>	This antibody replaces catalog number LS-C46866. It has been validated for use in the following assays: IHC-P.
<b>Target:</b>	collagen, type XVIII, alpha 1 (COL18A1)
<b>Synonyms:</b>	COL18A1 Antibody, Collagen, type XVIII, alpha 1 Antibody, Collagen alpha-1(XVIII) chain Antibody, Endostatin Antibody, KNO Antibody, KNO1 Antibody, KS Antibody, Multi-functional protein MFP Antibody, Antiangiogenic agent Antibody, Collagen alpha 1(xviii) Antibody, Knobloch syndrome, type 1 Antibody
<b>Family / Subfamily:</b>	Collagen / not assigned-Collagen
<b>Host</b>	COL18A1 antibody was produced in Rabbit
<b>Clonality:</b>	Polyclonal
<b>Immunogen Species:</b>	COL18A1 / Endostatin antibody was raised against Mouse
<b>Antigen Type:</b>	Synthetic peptide
<b>Immunogen:</b>	COL18A1 / Endostatin antibody was raised against synthetic peptide from mouse COL18A1 / Endostatin.
<b>Specificity:</b>	Synthetic peptide corresponding to C-terminal residues of mouse Col18a1 (Collagen alpha1(XVIII) chain precursor, contains: Endostatin).
<b>Epitope:</b>	C-Terminus
<b>Reactivity:</b>	Mouse, Human
<b>Purification:</b>	Immunoaffinity purified
<b>Presentation:</b>	PBS, 0.01% sodium azide, 50% glycerol.
<b>Recommended Storage:</b>	Short term 4°C, long term aliquot and store at -20°C, avoid freeze thaw cycles.
<b>Usage Summary:</b>	Immunohistochemistry: LS-B2163 was validated for use in immunohistochemistry on a panel of 21 formalin-fixed, paraffin-embedded (FFPE) human tissues after heat induced antigen retrieval in pH 6.0 citrate buffer. After incubation with the primary antibody, slides were incubated with biotinylated secondary antibody, followed by alkaline phosphatase-streptavidin and chromogen. The stained slides were evaluated by a pathologist to confirm staining specificity. The optimal working concentration for LS-B2163 was determined to be 10 ug/ml.
<b>Uses:</b>	IHC - Paraffin (10 µg/ml), Western blot (1 µg/ml), ELISA (1 µg/ml) (Optimal dilution to be determined by the researcher)
<b>Size:</b>	50 µg
<b>Concentration:</b>	0.5 mg/ml

**Immunohistochemistry Image:**



Anti-COL18A1 / Endostatin antibody IHC of human kidney. Immunohistochemistry of formalin-fixed, paraffin-embedded tissue after heat-induced antigen retrieval. Antibody LS-B2163 concentration 10 ug/ml.

**Requested From:**

Japan

Laboratory Reagent For In Vitro Research Use Only

Not for resale without prior written consent from LifeSpan BioSciences, Inc.

Created on 9/23/2014

© 2014 LifeSpan BioSciences