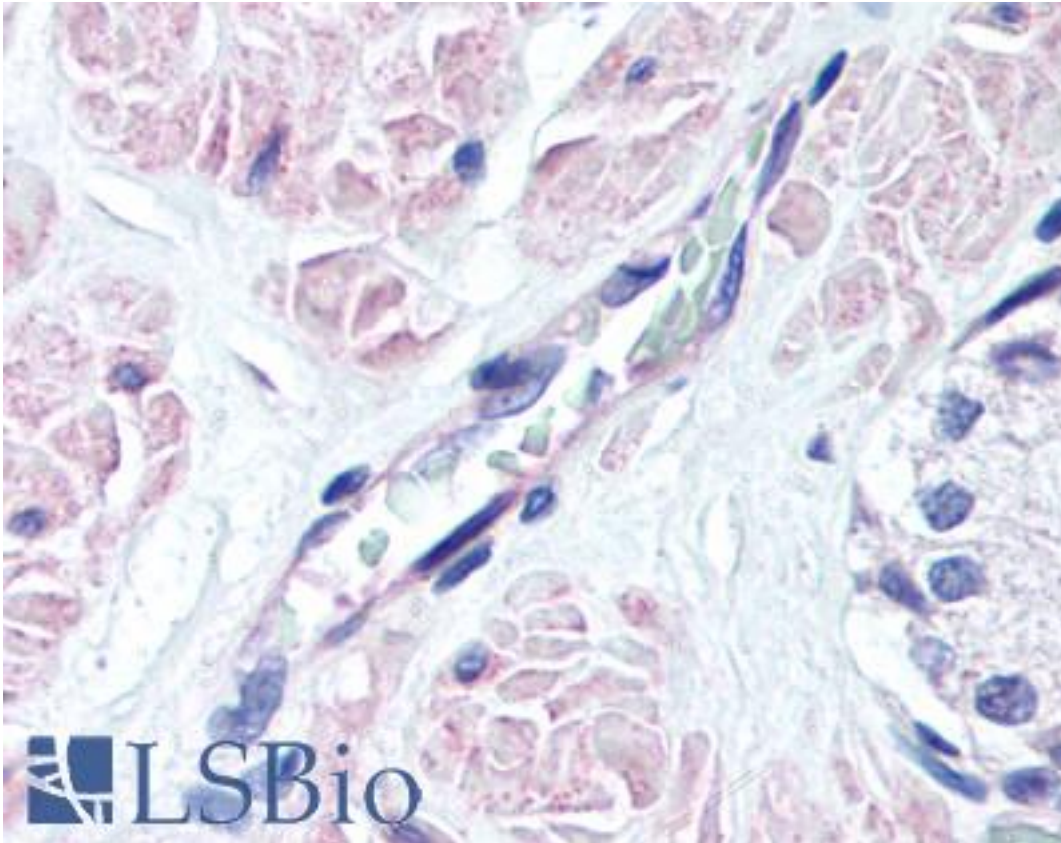


SIPR3 / EDG3 / S1P3 Rabbit anti-Human Polyclonal (aa12-25) Antibody - LS-B2155 - LSBio

<b>CatalogID:</b>	LS-B2155
<b>Validation:</b>	This antibody replaces catalog number LS-C22994. It has been validated for use in the following assays: IHC-P.
<b>Target:</b>	sphingosine-1-phosphate receptor 3 (S1PR3)
<b>Synonyms:</b>	S1PR3 Antibody, EDG-3 Antibody, EDG3 Antibody, LPB3 Antibody, S1P receptor EDG3 Antibody, S1P3 Antibody, S1P receptor Edg-3 Antibody, S1P receptor 3 Antibody
<b>Family / Subfamily:</b>	GPCR / Lysophospholipid/Lysosphingolipid
<b>Host</b>	S1PR3 antibody was produced in Rabbit
<b>Clonality:</b>	Polyclonal
<b>Isotype:</b>	IgG
<b>Immunogen Species:</b>	SIPR3 / EDG3 / S1P3 antibody was raised against Human
<b>Antigen Type:</b>	Synthetic peptide
<b>Immunogen:</b>	SIPR3 / EDG3 / S1P3 antibody was raised against synthetic peptide corresponding to aa12-25 [VRGNETLREHYQYV] of human EDG 3 protein. Species sequence Homology: Mouse, rat: 79% (11/14). Percent identity by BLAST analysis: Human, Gorilla (100%); Gibbon (93%); Marmoset (86%).
<b>Specificity:</b>	Recognizes human EDG 3 receptor at ~47kD in human cerebral cortex. Liver and heart tissues display 2-3 bands between 40-50kD, possibly due to different degrees of glycosylation.
<b>Epitope:</b>	aa12-25
<b>Reactivity:</b>	Human, Gorilla
<b>Predicted Reactivity:</b>	Gibbon
<b>Purification:</b>	Immunoaffinity purified
<b>Presentation:</b>	TBS, pH 7.4, 5 mg/ml BSA
<b>Recommended Storage:</b>	Long term: -20°C; Short term: +4°C. Avoid repeat freeze-thaw cycles.
<b>Usage Summary:</b>	Immunohistochemistry: LS-B2155 was validated for use in immunohistochemistry on a panel of 21 formalin-fixed, paraffin-embedded (FFPE) human tissues after heat induced antigen retrieval in pH 6.0 citrate buffer. After incubation with the primary antibody, slides were incubated with biotinylated secondary antibody, followed by alkaline phosphatase-streptavidin and chromogen. The stained slides were evaluated by a pathologist to confirm staining specificity. The optimal working concentration for LS-B2155 was determined to be 10 ug/ml.
<b>Uses:</b>	IHC - Paraffin (10 µg/ml), ICC, Western blot (3 µg/ml) (Optimal dilution to be determined by the researcher)
<b>Size:</b>	50 µg
<b>Concentration:</b>	1 mg/ml

**Immunohistochemistry Image:**



Anti-EDG3 antibody IHC of human prostate, vessel. Immunohistochemistry of formalin-fixed, paraffin-embedded tissue after heat-induced antigen retrieval. Antibody LS-B2155 concentration 10 ug/ml.

**Requested From:**

Japan

Laboratory Reagent For In Vitro Research Use Only

Not for resale without prior written consent from LifeSpan BioSciences, Inc.

Created on 9/23/2014

© 2014 LifeSpan BioSciences