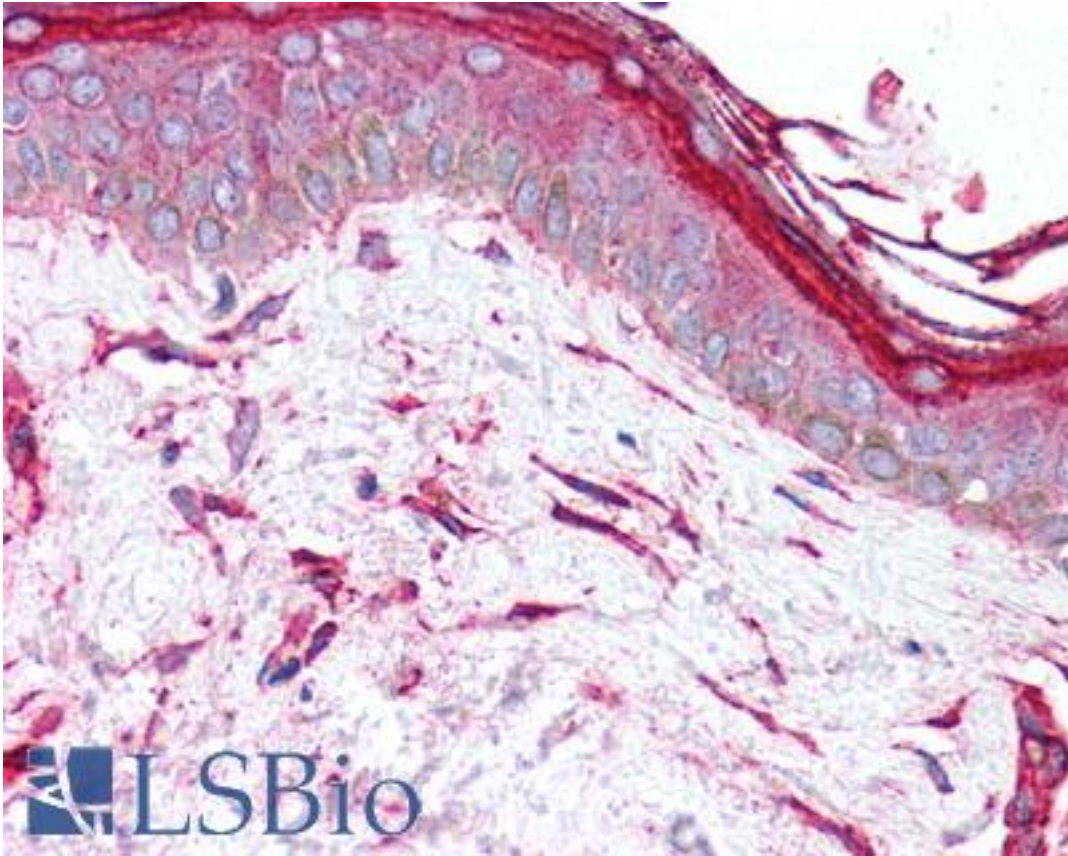


SERPINH1 / HSP47 Rabbit anti-Human Polyclonal Antibody - LS-B2151 - LSBio

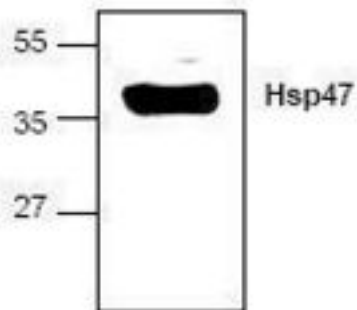
CatalogID:	LS-B2151
Validation:	This antibody replaces catalog number LS-C48476. It has been validated for use in the following assays: IHC-P.
Target:	serpin peptidase inhibitor, clade H (heat shock protein 47), member 1, (collagen binding protein 1) (SERPINH1)
Synonyms:	SERPINH1 Antibody, 47 kDa heat shock protein Antibody, AsTP3 Antibody, Colligin Antibody, Colligin-1 Antibody, Collagen-binding protein Antibody, Colligin-2 Antibody, CBP1 Antibody, HSP47 Antibody, OI10 Antibody, Serpin H1 Antibody, SERPINH2 Antibody, CBP2 Antibody, Collagen-binding protein 1 Antibody, Colligen Antibody, gp46 Antibody, PIG14 Antibody, PPRM Antibody, RA-A47 Antibody
Host	SERPINH1 antibody was produced in Rabbit
Clonality:	Polyclonal
Immunogen Species:	SERPINH1 / HSP47 antibody was raised against Human
Antigen Type:	Synthetic peptide
Immunogen:	SERPINH1 / HSP47 antibody was raised against synthetic peptide surrounding amino acid 407 of human HSP47.
Specificity:	The antibody recognizes 47 kD Hsp47 of human, mouse, rat, and chick origins. Mouse small intestine tissue lysate can be used as a positive control.
Reactivity:	Human, Mouse, Rat, Chicken
Purification:	Protein A purified
Presentation:	PBS, 30% glycerol, 0.5% BSA, 0.01% Thimerosal.
Recommended Storage:	Long term: -70°C; Short term: -20°C; Avoid freeze-thaw cycles.
Usage Summary:	Immunohistochemistry: LS-B2151 was validated for use in immunohistochemistry on a panel of 21 formalin-fixed, paraffin-embedded (FFPE) human tissues after heat induced antigen retrieval in pH 6.0 citrate buffer. After incubation with the primary antibody, slides were incubated with biotinylated secondary antibody, followed by alkaline phosphatase-streptavidin and chromogen. The stained slides were evaluated by a pathologist to confirm staining specificity. The optimal working concentration for LS-B2151 was determined to be 2.5 ug/ml.
Uses:	IHC - Paraffin (2.5 µg/ml), IHC - Frozen (10 - 20 µg/ml), Western blot (0.5 - 4 µg/ml), Immunoprecipitation (10 - 20 µg/ml) (Optimal dilution to be determined by the researcher)
Size:	50 µg
Concentration:	0.2 mg/ml

Immunohistochemistry Image:



Anti-SERPINH1 / HSP47 antibody IHC of human skin, fibroblasts. Immunohistochemistry of formalin-fixed, paraffin-embedded tissue after heat-induced antigen retrieval. Antibody LS-B2151 concentration 5 ug/ml.

Western Blot Image:



Western blot of SERPINH1 / HSP47 antibody LS-B2151.

Requested From:

Japan

Laboratory Reagent For In Vitro Research Use Only

Not for resale without prior written consent from LifeSpan BioSciences, Inc.

Created on 9/23/2014

© 2014 LifeSpan BioSciences