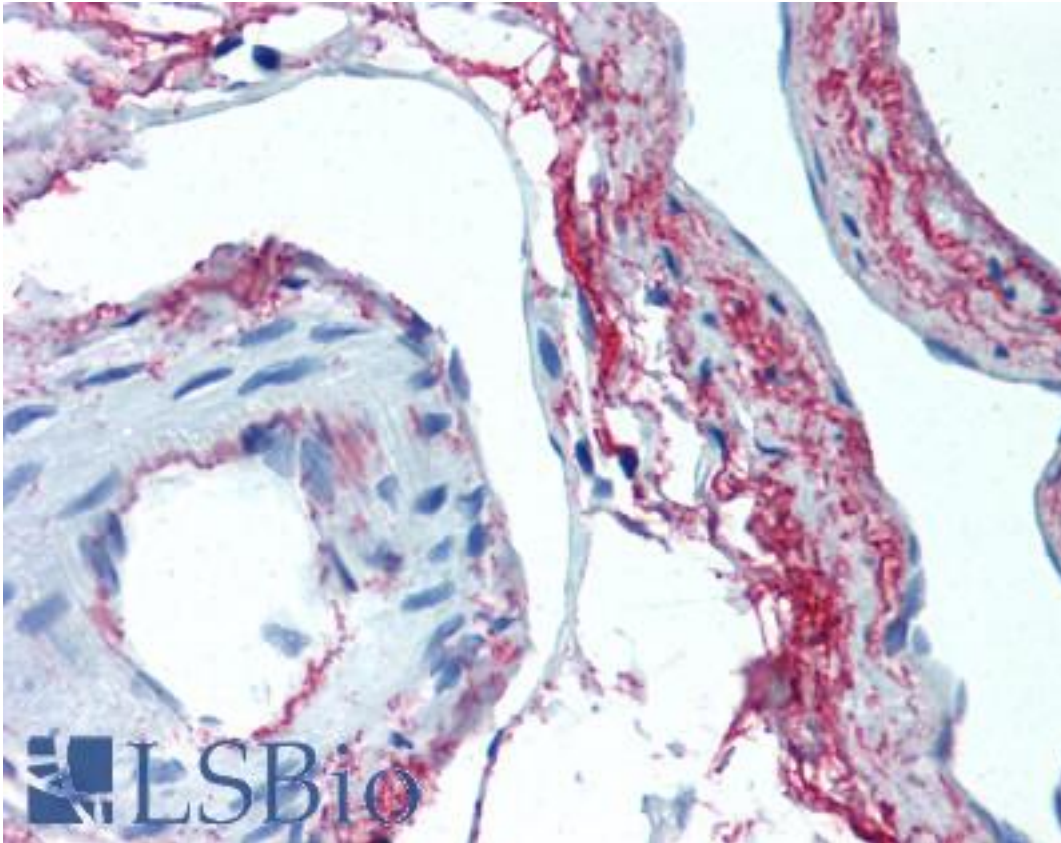


ELN / Elastin Mouse anti-Chicken Monoclonal Antibody - LS-B2146 - LSBio

CatalogID:	LS-B2146
Validation:	This antibody replaces catalog number LS-C23008. It has been validated for use in the following assays: IHC-P.
Target:	elastin (ELN)
Synonyms:	ELN Antibody, SVAS Antibody, WBS Antibody, Elastin Antibody, Tropoelastin Antibody, WS Antibody
Host	ELN antibody was produced in Mouse
Clonality:	Monoclonal
Immunogen Species:	ELN / Elastin antibody was raised against Chicken
Immunogen:	ELN / Elastin antibody was raised against tropoelastin from 17-day old lathyric chick embryo aortae, extracted and purified according to the method of Rich and Foster, Meth. Enzymol. 82:665-673(1982).
Specificity:	Recognizes chicken Elastin.
Reactivity:	Chicken, Human, Mouse, Bovine
Purification:	Protein A purified
Presentation:	PBS, pH 7.6, 0.1% sodium azide.
Recommended Storage:	Long term: -20°C; Short term: +4°C. Avoid repeat freeze-thaw cycles.
Usage Summary:	Immunohistochemistry: LS-B2146 was validated for use in immunohistochemistry on a panel of 21 formalin-fixed, paraffin-embedded (FFPE) human tissues after heat induced antigen retrieval in pH 6.0 citrate buffer. After incubation with the primary antibody, slides were incubated with biotinylated secondary antibody, followed by alkaline phosphatase-streptavidin and chromogen. The stained slides were evaluated by a pathologist to confirm staining specificity. The optimal working concentration for LS-B2146 was determined to be 5 ug/ml.
Uses:	IHC - Paraffin (5 µg/ml), Immunofluorescence, Western blot, Immunoprecipitation, ELISA (Optimal dilution to be determined by the researcher)
Size:	50 µg
Concentration:	1 mg/ml

Immunohistochemistry Image:



Anti-Elastin antibody IHC of human skeletal muscle, vessels. Immunohistochemistry of formalin-fixed, paraffin-embedded tissue after heat-induced antigen retrieval. Antibody LS-B2146 concentration 5 ug/ml.

Requested From:

Japan

Laboratory Reagent For In Vitro Research Use Only

Not for resale without prior written consent from LifeSpan BioSciences, Inc.

Created on 9/23/2014

© 2014 LifeSpan BioSciences