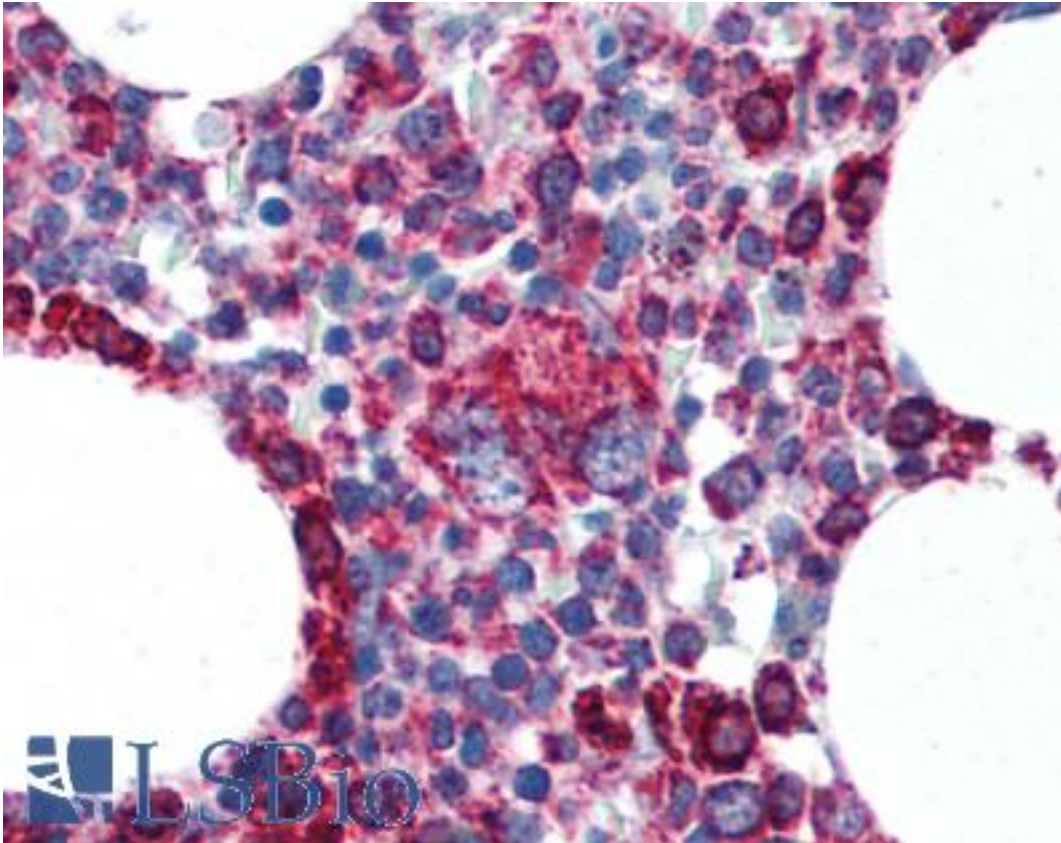


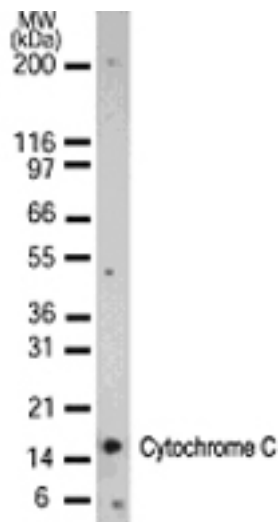
CYCS / Cytochrome c Mouse anti-Pigeon Monoclonal (aa1-80) (7H8.2C12) Antibody - LS-B2141 - LSBio	
CatalogID:	LS-B2141
Validation:	This antibody replaces catalog number LS-C514. It has been validated for use in the following assays: IHC-P.
Target:	cytochrome c, somatic (CYCS)
Synonyms:	CYCS Antibody, CYC Antibody, HCS Antibody, THC4 Antibody, Cytochrome c Antibody, Cytochrome c, somatic Antibody
Host	CYCS antibody was produced in Mouse
Clonality:	Monoclonal
Isotype:	IgG2b
Clone Name:	7H8.2C12
Immunogen Species:	CYCS / Cytochrome c antibody was raised against Pigeon
Antigen Type:	Synthetic peptide
Immunogen:	CYCS / Cytochrome c antibody was raised against synthetic peptide from pigeon CYCS / Cytochrome c.
Specificity:	Synthetic peptides corresponding to amino acids 1-80, 81-104 and 66-104 of pigeon CYT were used as the immunogen (Jemmerson et al. 1991). The antibody recognizes an epitope within amino acids 93-104 of pigeon Cytochrome C.
Epitope:	aa1-80
Reactivity:	Pigeon, Human, Mouse, Rat, Hamster, Horse, Drosophila
Purification:	Protein G purified
Presentation:	PBS, 0.2% gelatin, 0.05% sodium azide.
Recommended Storage:	+4°C or -20°C, Avoid repeated freezing and thawing.
Usage Summary:	Immunohistochemistry: LS-B2141 was validated for use in immunohistochemistry on a panel of 21 formalin-fixed, paraffin-embedded (FFPE) human tissues after heat induced antigen retrieval in pH 6.0 citrate buffer. After incubation with the primary antibody, slides were incubated with biotinylated secondary antibody, followed by alkaline phosphatase-streptavidin and chromogen. The stained slides were evaluated by a pathologist to confirm staining specificity. The optimal working concentration for LS-B2141 was determined to be 5 ug/ml.
Uses:	IHC - Paraffin (5 µg/ml), ICC, Western blot (1:500 - 1:1000) (Optimal dilution to be determined by the researcher)
Size:	50 µg
Concentration:	0.5 mg/ml

Immunohistochemistry Image:



Anti-Cytochrome c antibody IHC of human bone marrow. Immunohistochemistry of formalin-fixed, paraffin-embedded tissue after heat-induced antigen retrieval. Antibody LS-B2141 concentration 5 ug/ml.

Western Blot Image:



Western blot detection of Cytochrome C in 15 ugs of HeLa cell lysate using antibody at 1:1000. A 15 kD band is detected.

Requested From:

Japan

Laboratory Reagent For In Vitro Research Use Only

Not for resale without prior written consent from LifeSpan BioSciences, Inc.

Created on 9/23/2014

© 2014 LifeSpan BioSciences