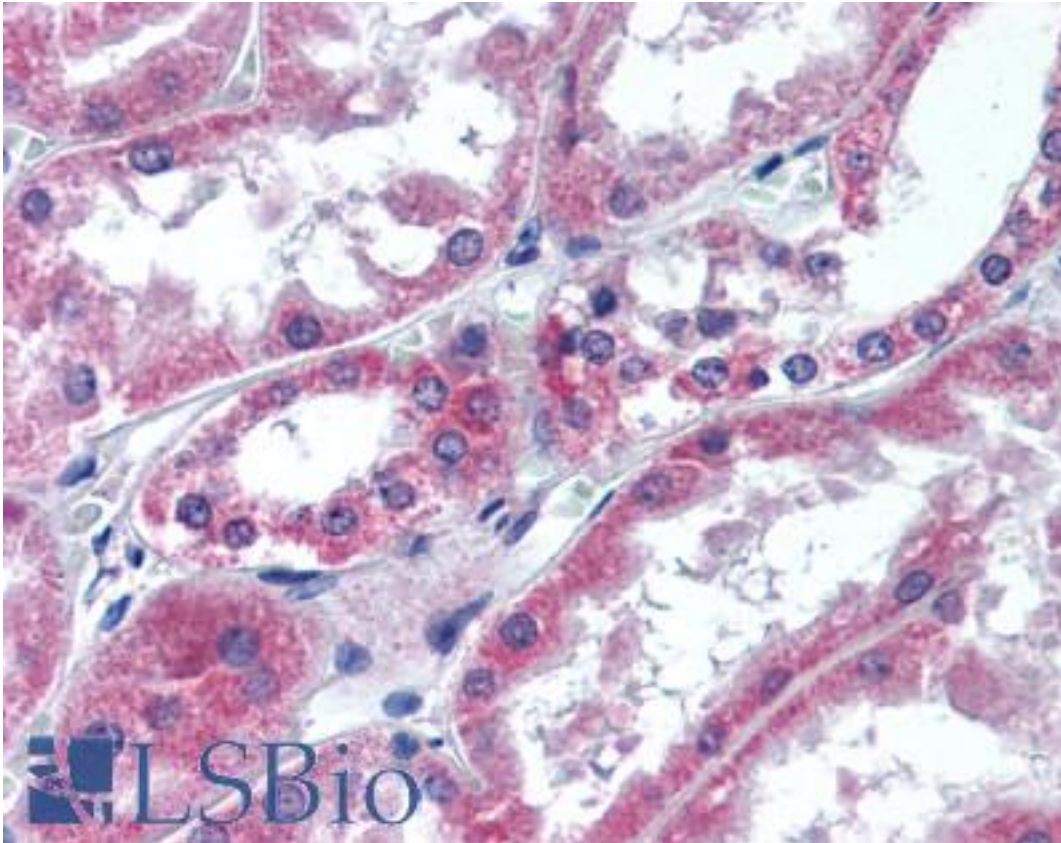


APG12 / ATG12 Rabbit anti-Human Polyclonal (Internal) Antibody - LS-B2140 - LSBio	
CatalogID:	LS-B2140
Validation:	This antibody replaces catalog number LS-C11938. It has been validated for use in the following assays: IHC-P.
Target:	autophagy related 12 (ATG12)
Synonyms:	ATG12 Antibody, Autophagy-related protein 12 Antibody, APG12L Antibody, Autophagy related 12 Antibody, FBR93 Antibody, APG12 Antibody, APG12-like Antibody, Ubiquitin-like protein ATG12 Antibody, HAPG12 Antibody
Host	ATG12 antibody was produced in Rabbit
Clonality:	Polyclonal
Isotype:	IgG
Immunogen Species:	APG12 / ATG12 antibody was raised against Human
Antigen Type:	Synthetic peptide
Immunogen:	APG12 / ATG12 antibody was raised against synthetic peptide derived from the internal region of the human Apg12 protein.
Specificity:	Recognizes human Apg12 protein at ~22kD, as well as additional bands between 40 and 80kD of unknown origin. Reactivity has been confirmed with Apg12-transfected, overexpressed HEK293 cell lysates.
Epitope:	Internal
Reactivity:	Human, Mouse
Purification:	Immunoaffinity purified
Presentation:	PBS, pH 7.4, 0.1% sodium azide.
Recommended Storage:	+4°C or -20°C, Avoid repeated freezing and thawing.
Usage Summary:	Immunohistochemistry: LS-B2140 was validated for use in immunohistochemistry on a panel of 21 formalin-fixed, paraffin-embedded (FFPE) human tissues after heat induced antigen retrieval in pH 6.0 citrate buffer. After incubation with the primary antibody, slides were incubated with biotinylated secondary antibody, followed by alkaline phosphatase-streptavidin and chromogen. The stained slides were evaluated by a pathologist to confirm staining specificity. The optimal working concentration for LS-B2140 was determined to be 5 ug/ml. Immunoprecipitation: 7 ug/reaction.
Uses:	IHC - Paraffin (5 µg/ml), Western blot (1 - 3 µg/ml), Immunoprecipitation, ELISA (0.1 - 1 µg/ml) (Optimal dilution to be determined by the researcher)
Size:	50 µg
Concentration:	0.25 mg/ml

Immunohistochemistry Image:



Anti-ATG12 antibody IHC of human kidney. Immunohistochemistry of formalin-fixed, paraffin-embedded tissue after heat-induced antigen retrieval. Antibody LS-B2140 concentration 5 ug/ml.

Requested From:

Japan

Laboratory Reagent For In Vitro Research Use Only

Not for resale without prior written consent from LifeSpan BioSciences, Inc.

Created on 9/23/2014

© 2014 LifeSpan BioSciences