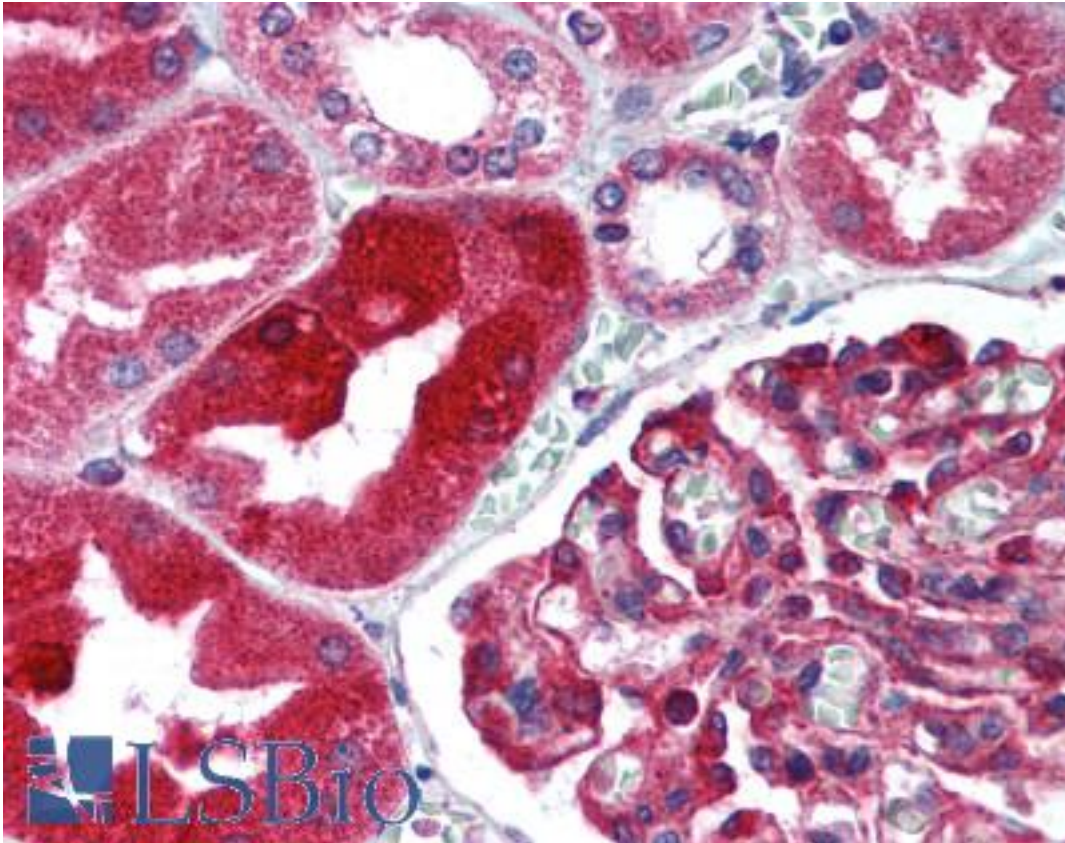


TJP1 / ZO-1 Rabbit anti-Human Polyclonal (aa463-1109) Antibody - LS-B2129 - LSBio

CatalogID:	LS-B2129
Validation:	This antibody replaces catalog number LS-C18588. It has been validated for use in the following assays: IHC-P.
Target:	tight junction protein 1 (TJP1)
Synonyms:	TJP1 Antibody, ZO-1 Antibody, Zona occludens protein 1 Antibody, Zona occludens 1 Antibody, Zonula occludens protein 1 Antibody, Tight junction protein 1 Antibody, ZO1 Antibody, Tight junction protein ZO-1 Antibody, Zonula occludens 1 protein Antibody
Family / Subfamily:	Occludin / Not assigned-Occludin
Host	TJP1 antibody was produced in Rabbit
Clonality:	Polyclonal
Isotype:	IgG
Immunogen Species:	TJP1 / ZO-1 antibody was raised against Human
Antigen Type:	Fusion protein
Immunogen:	TJP1 / ZO-1 antibody was raised against a 69kD fusion protein corresponding to aa463-1109 of human ZO-1 cDNA. This sequence lies N-terminal to the 80 amino acid region (the alpha-motif) present in the $\alpha+$ -isoform but absent in the $\alpha-$ isoform due to alternative splicing.
Specificity:	Recognizes human ZO-1 $\alpha+$ and ZO- $\alpha-$ isoforms. Reactivity with dlG has not been characterized. No reactivity with PSD-95 or p55 has been observed on Western blots, but potential reactivity with these proteins has not been fully characterized. Predicted species cross-reactivity: mouse, rat, guinea pig, canine and chicken (moderate reactivity). Please note that cross-reactivity with predicted species is only predicted and is not guaranteed.
Epitope:	aa463-1109
Reactivity:	Human, Mouse, Rat, Dog, Guinea pig
Purification:	Immunoaffinity purified
Presentation:	PBS, pH 7.4, 0.1% sodium azide
Recommended Storage:	Long term: -20°C; Short term: +4°C. Avoid repeat freeze-thaw cycles.
Usage Summary:	Immunohistochemistry: LS-B2129 was validated for use in immunohistochemistry on a panel of 21 formalin-fixed, paraffin-embedded (FFPE) human tissues after heat induced antigen retrieval in pH 6.0 citrate buffer. After incubation with the primary antibody, slides were incubated with biotinylated secondary antibody, followed by alkaline phosphatase-streptavidin and chromogen. The stained slides were evaluated by a pathologist to confirm staining specificity. The optimal working concentration for LS-B2129 was determined to be 5 μ g/ml. Western Blot: 0.5-2 μ g/ml. Immunoprecipitation: 2-5 μ g/reaction.
Uses:	IHC - Paraffin (5 μ g/ml), IHC - Frozen, Western blot (0.5 - 2 μ g/ml), Immunoprecipitation, ELISA (Optimal dilution to be determined by the researcher)
Size:	50 μ g
Concentration:	0.25 mg/ml

Immunohistochemistry Image:



Anti-ZO-1 antibody IHC of human kidney. Immunohistochemistry of formalin-fixed, paraffin-embedded tissue after heat-induced antigen retrieval. Antibody LS-B2129 concentration 5 ug/ml.

Requested From:

Japan

Laboratory Reagent For In Vitro Research Use Only

Not for resale without prior written consent from LifeSpan BioSciences, Inc.

Created on 9/23/2014

© 2014 LifeSpan BioSciences