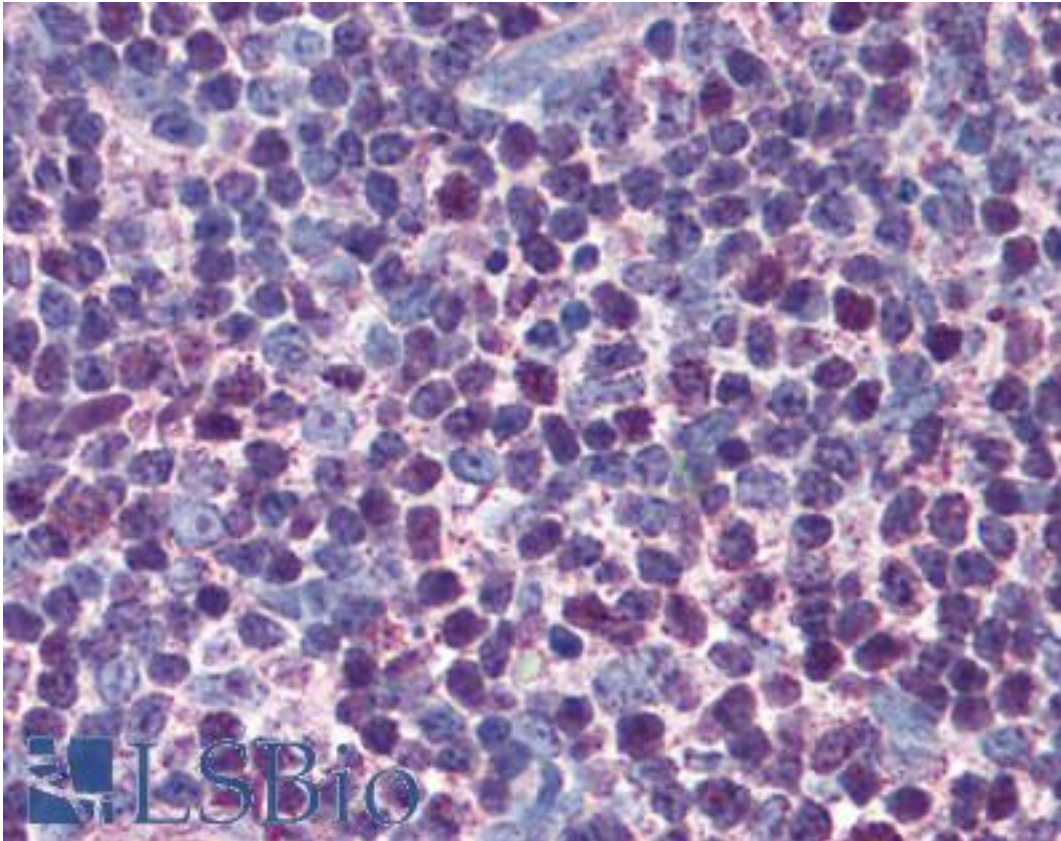


CASP3 / Caspase 3 Mouse anti-Human Monoclonal (31A1067) Antibody - LS-B2125 - LSBio

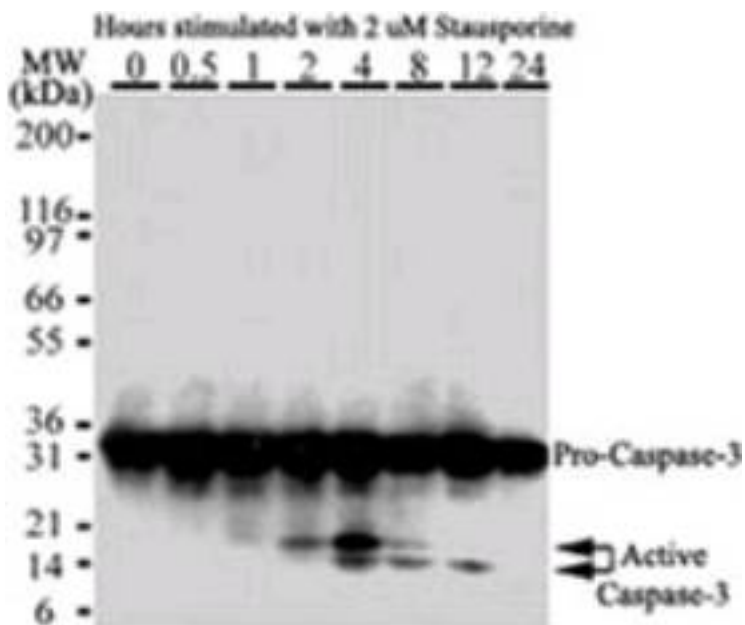
CatalogID:	LS-B2125
Validation:	This antibody replaces catalog number LS-C586. It has been validated for use in the following assays: IHC-P.
Target:	caspase 3, apoptosis-related cysteine peptidase (CASP3)
Synonyms:	CASP3 Antibody, Apopain Antibody, CASP-3 Antibody, Caspase-3 Antibody, CPP32B Antibody, CPP32 Antibody, Cysteine protease CPP32 Antibody, SCA-1 Antibody, SREBP cleavage activity 1 Antibody, Yama Antibody, Procaspase3 Antibody, Caspase 3 Antibody, CPP-32 Antibody, PARP cleavage protease Antibody, Protein Yama Antibody
Family / Subfamily:	Protease / Cysteine C14
Host	CASP3 antibody was produced in Mouse
Clonality:	Monoclonal
Isotype:	IgG
Clone Name:	31A1067
Immunogen Species:	CASP3 / Caspase 3 antibody was raised against Human
Immunogen:	CASP3 / Caspase 3 antibody was raised against recombinant human CASP3 / Caspase 3.
Specificity:	Full-length recombinant human caspase-3 protein was used as immunogen. The antibody recognizes an epitope in the large domain subunit of Caspase-3. As such it will recognize pro Caspase-3 and the large subunit cleavage fragment.
Reactivity:	Human, Mouse
Purification:	Protein G purified
Presentation:	PBS, 0.05% BSA, 0.05% sodium azide.
Recommended Storage:	+4°C or -20°C, Avoid repeated freezing and thawing.
Usage Summary:	Immunohistochemistry: LS-B2125 was validated for use in immunohistochemistry on a panel of 21 formalin-fixed, paraffin-embedded (FFPE) human tissues after heat induced antigen retrieval in pH 6.0 citrate buffer. After incubation with the primary antibody, slides were incubated with biotinylated secondary antibody, followed by alkaline phosphatase-streptavidin and chromogen. The stained slides were evaluated by a pathologist to confirm staining specificity. The optimal working concentration for LS-B2125 was determined to be 5 ug/ml.
Uses:	IHC - Paraffin (5 µg/ml), Western blot (2 - 3 µg/ml) (Optimal dilution to be determined by the researcher)
Size:	50 µg
Concentration:	0.5 mg/ml

Immunohistochemistry Image:



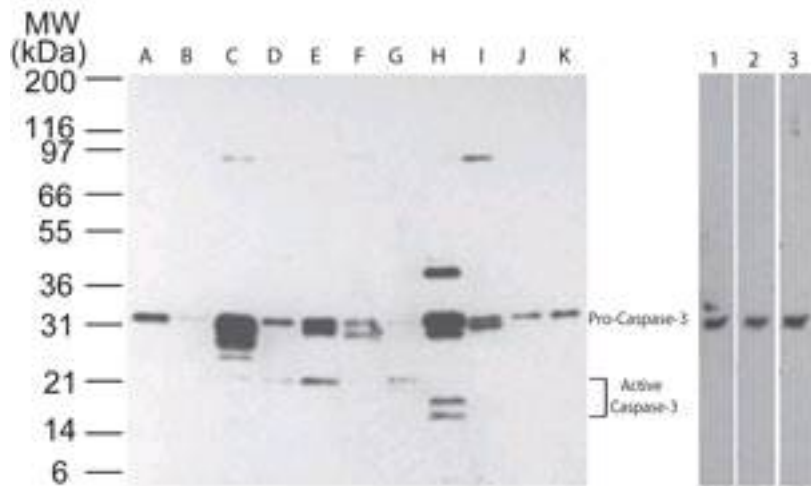
Anti-Caspase 3 antibody IHC of human thymus. Immunohistochemistry of formalin-fixed, paraffin-embedded tissue after heat-induced antigen retrieval. Antibody LS-B2125 concentration 5 ug/ml.

Western Blot Image:



Western blot of Caspase-3 in HeLa cells. The antibody detected both pro (full-length) and active (cleaved) Caspase-3, depending on the treatment time points.

Western Blot Image:



Western blot of Caspase-3 in multiple human tissues. The tissues shown are A) brain, B) heart, C) intestine, D) kidney, E) liver, F) lung, G) muscle, H) stomach, I) spleen, J) ovary, and K) testis. Lanes 1, 2 and 3 demonstrate the species cross-reactivity of the antibody in human, mouse and rat heart lysate, respectively.

Requested From:

Japan

Laboratory Reagent For In Vitro Research Use Only

Not for resale without prior written consent from LifeSpan BioSciences, Inc.

Created on 9/23/2014

© 2014 LifeSpan BioSciences