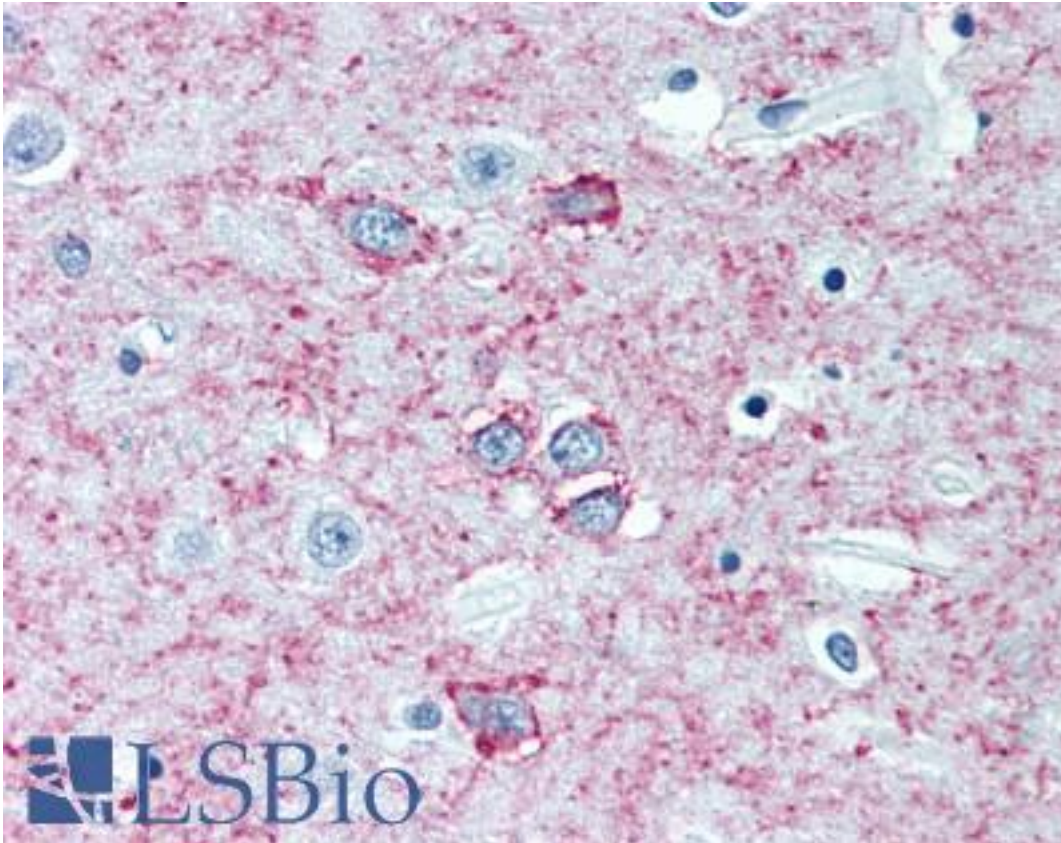


ADORA2A/Adenosine A2A Receptor Mouse anti-Human Monoclonal (3rd Intracellular Domain) Antibody - LS-B2122 - LSBio	
CatalogID:	LS-B2122
Validation:	This antibody replaces catalog number LS-C20307. It has been validated for use in the following assays: IHC-P.
Target:	adenosine A2a receptor (ADORA2A)
Synonyms:	ADORA2A Antibody, Adenosine receptor A2a Antibody, ADORA2 Antibody, A2a receptor Antibody, Adenosine A2a receptor Antibody, Adenosine A2 receptor Antibody, Adenosine receptor subtype A2a Antibody, HA2aR Antibody, RDC8 Antibody
Family / Subfamily:	GPCR / Adenosine
Host	ADORA2A antibody was produced in Mouse
Clonality:	Monoclonal
Isotype:	IgG2a
Immunogen Species:	ADORA2A/Adenosine A2A Receptor antibody was raised against Human
Antigen Type:	Recombinant protein
Immunogen:	ADORA2A/Adenosine A2A Receptor antibody was raised against 6His-tagged full-length human recombinant A2A receptor. Epitope mapped to SQPLPGER in the third intracellular loop.
Specificity:	Recognizes human adenosine receptor A2A at ~43kD.
Epitope:	3rd Intracellular Domain
Reactivity:	Human, Mouse, Rat, Dog, Guinea pig, Rabbit
Purification:	Protein G purified
Presentation:	0.01M Tris-Glycine, pH 7.4, 0.15M sodium chloride, 0.05% sodium azide
Recommended Storage:	Long term: -20°C; Short term: +4°C; Avoid freeze-thaw cycles.
Usage Summary:	Immunohistochemistry: LS-B2122 was validated for use in immunohistochemistry on a panel of 21 formalin-fixed, paraffin-embedded (FFPE) human tissues after heat induced antigen retrieval in pH 6.0 citrate buffer. After incubation with the primary antibody, slides were incubated with biotinylated secondary antibody, followed by alkaline phosphatase-streptavidin and chromogen. The stained slides were evaluated by a pathologist to confirm staining specificity. The optimal working concentration for LS-B2122 was determined to be 5 ug/ml. Western Blot: 1:1000-1:5000 detected Adenosine Receptor A2A in HEK293 cells expressing canine A1/A2A receptor chimeras.
Uses:	IHC - Paraffin (5 ug/ml), IHC - 4% paraformaldehyde (1 ug/ml), Western blot (1:1000), Flow Cytometry (Optimal dilution to be determined by the researcher)
Size:	50 ug
Concentration:	0.5 mg/ml

Immunohistochemistry Image:



Anti-ADORA2A antibody IHC of human brain, putamen. Immunohistochemistry of formalin-fixed, paraffin-embedded tissue after heat-induced antigen retrieval. Antibody LS-B2122 concentration 5 ug/ml.

Requested From:

Japan

Laboratory Reagent For In Vitro Research Use Only

Not for resale without prior written consent from LifeSpan BioSciences, Inc.

Created on 9/23/2014

© 2014 LifeSpan BioSciences