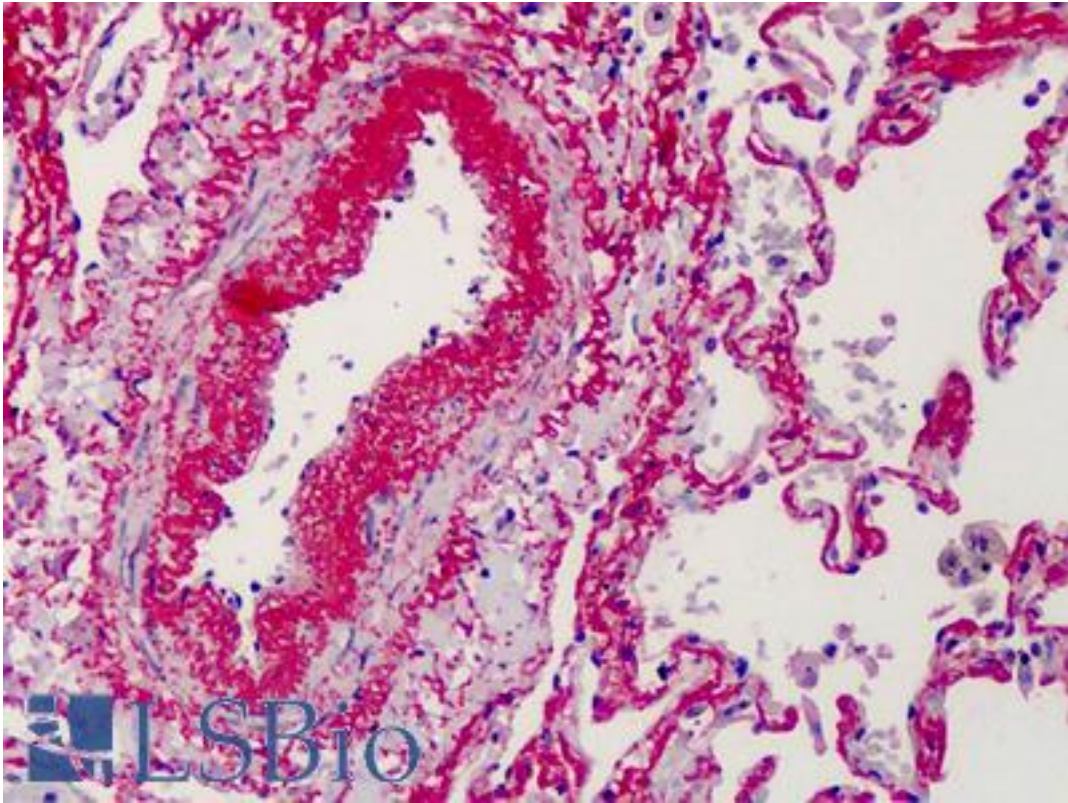


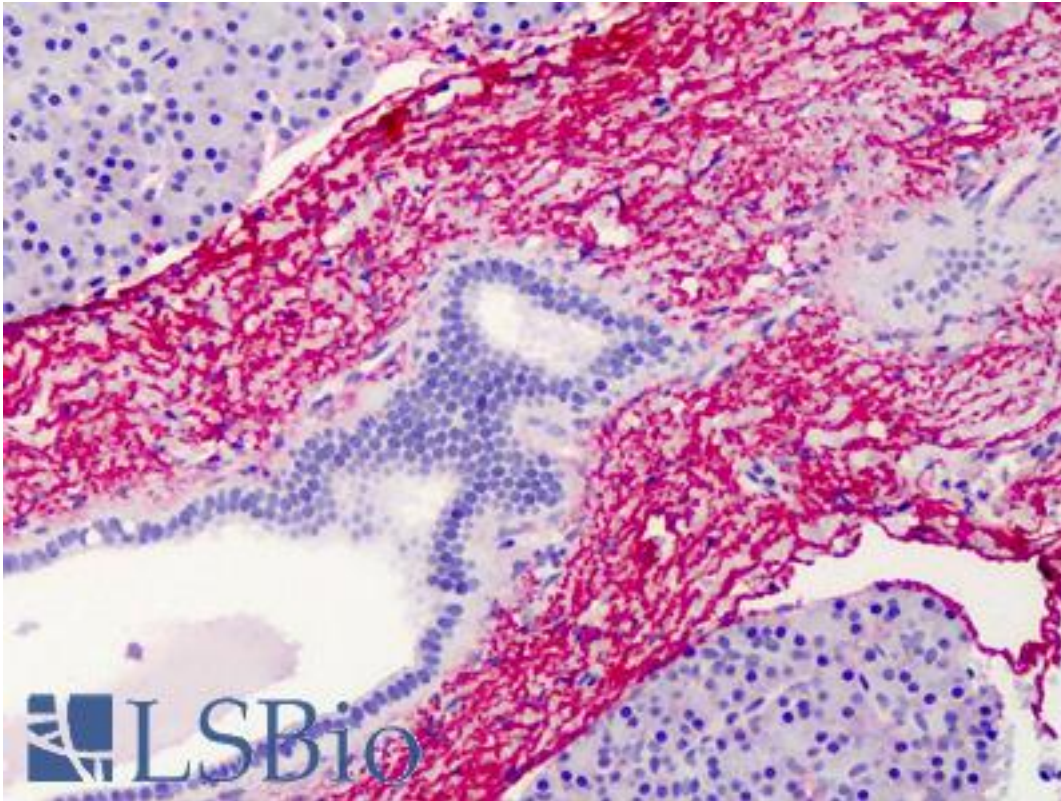
ELN / Elastin Rabbit anti-Human Polyclonal Antibody - LS-B2115 - LSBio	
<b>CatalogID:</b>	LS-B2115
<b>Validation:</b>	This antibody replaces catalog number LS-C23007. It has been validated for use in the following assays: IHC-P.
<b>Target:</b>	elastin (ELN)
<b>Synonyms:</b>	ELN Antibody, SVAS Antibody, WBS Antibody, Elastin Antibody, Tropoelastin Antibody, WS Antibody
<b>Host</b>	ELN antibody was produced in Rabbit
<b>Clonality:</b>	Polyclonal
<b>Immunogen Species:</b>	ELN / Elastin antibody was raised against Human
<b>Antigen Type:</b>	Purified protein
<b>Immunogen:</b>	ELN / Elastin antibody was raised against elastin extracted and purified from human skin
<b>Specificity:</b>	Recognizes human Elastin. Crossreactivity: < 0.1% with human Collagen I, II, III, IV, V, human Fibronectin, or rat Elastin by radioimmunoassay.
<b>Reactivity:</b>	Human
<b>Purification:</b>	Protein A purified
<b>Presentation:</b>	PBS buffer, pH 7.2 with no preservatives added
<b>Recommended Storage:</b>	Short term 4°C, long term aliquot and store at -20°C, avoid freeze thaw cycles.
<b>Usage Summary:</b>	Immunohistochemistry: LS-B2115 was validated for use in immunohistochemistry on a panel of 21 formalin-fixed, paraffin-embedded (FFPE) human tissues after heat induced antigen retrieval in pH 6.0 citrate buffer. After incubation with the primary antibody, slides were incubated with biotinylated secondary antibody, followed by alkaline phosphatase-streptavidin and chromogen. The stained slides were evaluated by a pathologist to confirm staining specificity. The optimal working concentration for LS-B2115 was determined to be 2.5 ug/ml. Immunofluorescence: 1:80. Frozen human skin and liver tissues. Positive control: Human skin or liver.
<b>Uses:</b>	IHC - Paraffin (2.5 µg/ml), Immunofluorescence (1:80), ELISA, Radioimmunoassay (Optimal dilution to be determined by the researcher)
<b>Size:</b>	50 µg
<b>Concentration:</b>	1 mg/ml

**Immunohistochemistry Image:**



Anti-Elastin antibody IHC of human lung. Immunohistochemistry of formalin-fixed, paraffin-embedded tissue after heat-induced antigen retrieval. Antibody LS-B2115 concentration 2.5 ug/ml.

**Immunohistochemistry Image:**



Anti-Elastin antibody IHC of human pancreas. Immunohistochemistry of formalin-fixed, paraffin-embedded tissue after heat-induced antigen retrieval. Antibody LS-B2115 concentration 2.5 ug/ml.

**Requested From:**

Japan

Laboratory Reagent For In Vitro Research Use Only

Not for resale without prior written consent from LifeSpan BioSciences, Inc.

Created on 9/23/2014

© 2014 LifeSpan BioSciences