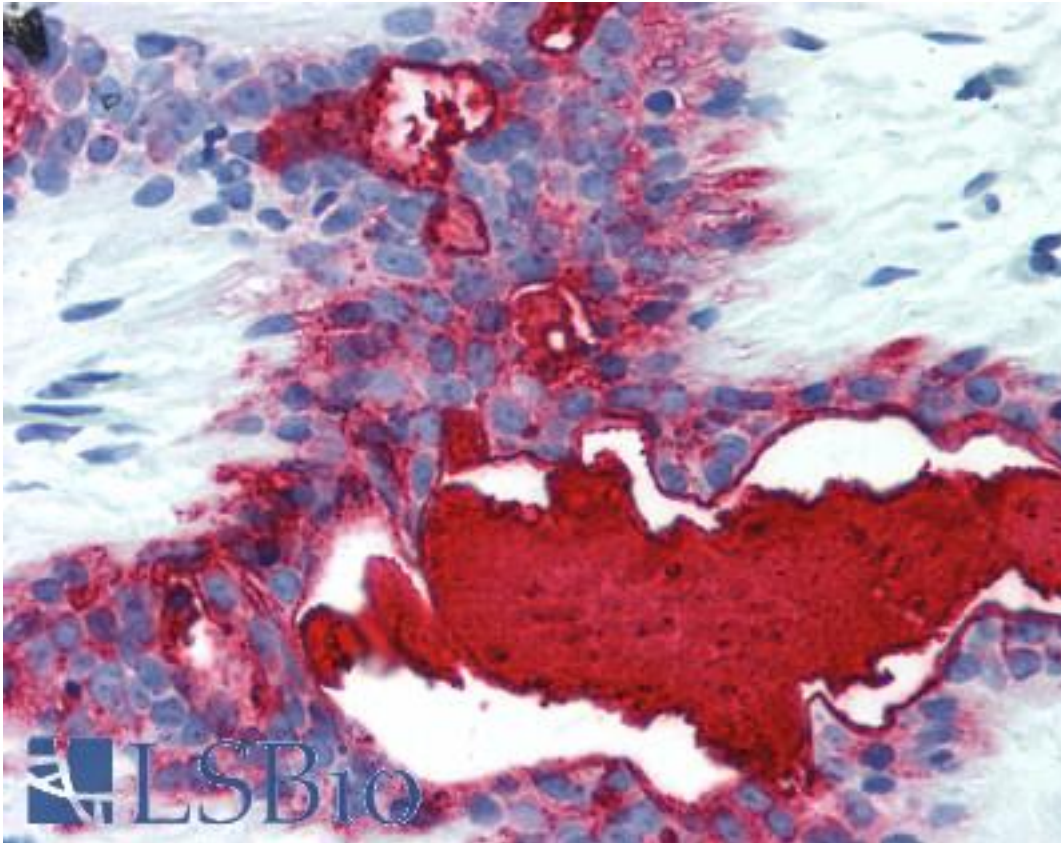


EMA / MUC1 Mouse anti-Human Monoclonal Antibody - LS-B2114 - LSBio	
<b>CatalogID:</b>	LS-B2114
<b>Validation:</b>	This antibody replaces catalog number LS-C16652. It has been validated for use in the following assays: IHC-P.
<b>Target:</b>	mucin 1, cell surface associated (MUC1)
<b>Synonyms:</b>	MUC1 Antibody, CA15-3 Antibody, CD227 Antibody, Carcinoma-associated mucin Antibody, CD227 antigen Antibody, DF3 antigen Antibody, Episialin Antibody, Epithelial membrane antigen Antibody, H23 antigen Antibody, H23AG Antibody, Krebs von den Lungen-6 Antibody, MAM6 Antibody, MUC1/ZD Antibody, MUC-1/SEC Antibody, Mucin-1 Antibody, Pem Antibody, KL-6 Antibody, MUC-1/X Antibody, Tumor-associated mucin Antibody, Peanut-reactive urinary mucin Antibody, Polymorphic epithelial mucin Antibody, PUM Antibody, EMA Antibody, MUC-1 Antibody, Mucin 1, transmembrane Antibody
<b>Family / Subfamily:</b>	Mucin / not assigned-Mucin
<b>Host</b>	MUC1 antibody was produced in Mouse
<b>Clonality:</b>	Monoclonal
<b>Isotype:</b>	IgG1
<b>Immunogen Species:</b>	EMA / MUC1 antibody was raised against Human
<b>Immunogen:</b>	EMA / MUC1 antibody was raised against affinity pure human CA15-3 antigen
<b>Specificity:</b>	Recognizes human Mucin 1
<b>Reactivity:</b>	Human
<b>Purification:</b>	Protein A purified
<b>Presentation:</b>	TBS, pH 7.5, 0.05% sodium azide.
<b>Recommended Storage:</b>	Short term 4°C, long term aliquot and store at -20°C, avoid freeze thaw cycles.
<b>Usage Summary:</b>	Immunohistochemistry: LS-B2114 was validated for use in immunohistochemistry on a panel of 21 formalin-fixed, paraffin-embedded (FFPE) human tissues after heat induced antigen retrieval in pH 6.0 citrate buffer. After incubation with the primary antibody, slides were incubated with biotinylated secondary antibody, followed by alkaline phosphatase-streptavidin and chromogen. The stained slides were evaluated by a pathologist to confirm staining specificity. The optimal working concentration for LS-B2114 was determined to be 5 ug/ml.
<b>Uses:</b>	IHC - Paraffin (5 µg/ml), Western blot, ELISA (Optimal dilution to be determined by the researcher)
<b>Size:</b>	50 µg
<b>Concentration:</b>	1 mg/ml

**Immunohistochemistry Image:**



Anti-MUC1 antibody IHC of human breast. Immunohistochemistry of formalin-fixed, paraffin-embedded tissue after heat-induced antigen retrieval. Antibody LS-B2114 concentration 5 ug/ml.

**Requested From:**

Japan

Laboratory Reagent For In Vitro Research Use Only

Not for resale without prior written consent from LifeSpan BioSciences, Inc.

Created on 9/23/2014

© 2014 LifeSpan BioSciences