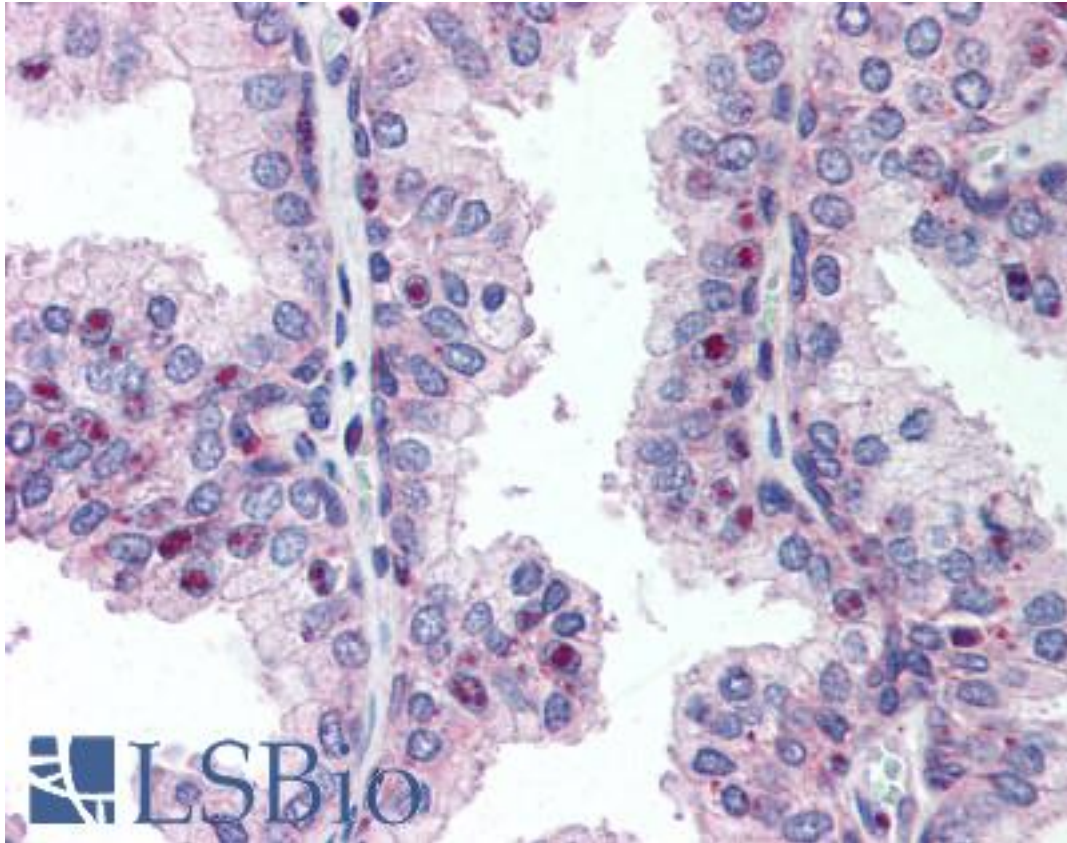


CENPU / MLF1IP Rabbit anti-Human Polyclonal (pThr78) Antibody - LS-B211 - LSBio

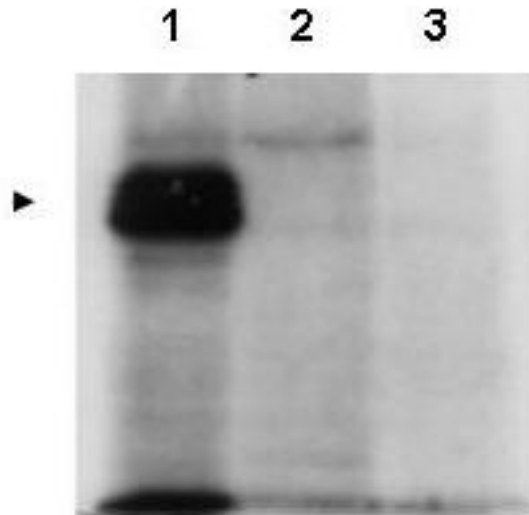
CatalogID:	LS-B211
Validation:	This antibody replaces catalog number LS-C19003. It has been validated for use in the following assays: IHC.
Target:	Centromere protein U (CENPU)
Synonyms:	CENPU Antibody, CENP-U Antibody, CENP50 Antibody, CENPU50 Antibody, Centromere protein U Antibody, ICEN24 Antibody, KLIP1 Antibody, Polo-box-interacting protein 1 Antibody, MLF1-interacting protein Antibody, CENP-50 Antibody, Centromere protein of 50 kDa Antibody, MLF1 interacting protein Antibody, MLF1IP Antibody, PBIP1 Antibody
Host	CENPU antibody was produced in Rabbit
Clonality:	Polyclonal
Immunogen Species:	CENPU / MLF1IP antibody was raised against Human
Antigen Type:	Synthetic peptide
Immunogen:	CENPU / MLF1IP antibody was raised against synthetic peptide from human MLF1IP / PBIP1.
Specificity:	Amino acids surrounding Thr78 of human MLF1IP protein.
Epitope:	pThr78
Reactivity:	Human, Chimpanzee, Bovine, Dog
Purification:	Immunoaffinity purified
Presentation:	0.02 M potassium phosphate, 0.15 M sodium chloride, pH 7.2, 0.01% sodium azide.
Recommended Storage:	Store vial at -20 C prior to opening. Dilute only prior to immediate use. For extended storage, aliquot contents and freeze at -20 C or below. Avoid cycles of freezing and thawing.
Usage Summary:	Immunohistochemistry: LS-B211 was validated for use in immunohistochemistry on a panel of 21 formalin-fixed, paraffin-embedded (FFPE) human tissues after heat induced antigen retrieval in pH 6.0 citrate buffer. After incubation with the primary antibody, slides were incubated with biotinylated secondary antibody, followed by alkaline phosphatase-streptavidin and chromogen. The stained slides were evaluated by a pathologist to confirm staining specificity. The optimal working concentration for LS-B211 was determined to be 10 ug/ml.
Uses:	IHC - Paraffin (10 µg/ml), Western blot (1:500 - 1:2000), Immunoprecipitation, ELISA (1:5000 - 1:25000) (Optimal dilution to be determined by the researcher)
Size:	50 µg
Concentration:	0.5 mg/ml

Immunohistochemistry Image:



Anti-MLF1IP / PBIP1 antibody IHC of human prostate. Immunohistochemistry of formalin-fixed, paraffin-embedded tissue after heat-induced antigen retrieval. Antibody LS-B211 concentration 10 ug/ml.

Western Blot Image:



Anti-MLF1IP Antibody - Western Blot. Western blot of affinity purified anti-MLF1IP antibody shows detection of MLF1IP (arrowhead) in HeLa cells transfected with ZZ-tagged MLF1IP (Lane 1). Lane 2 is lysate from non-transfected HeLa cells, and Lane 3 is lysate from HeLa cells containing a knock-out mutation for PBIP1/MLF1IP. Personal Communication, Kyung S. Lee, CCR-NCI, Bethesda, MD.

Requested From:

Japan

Laboratory Reagent For In Vitro Research Use Only

Not for resale without prior written consent from LifeSpan BioSciences, Inc.

Created on 9/23/2014

© 2014 LifeSpan BioSciences