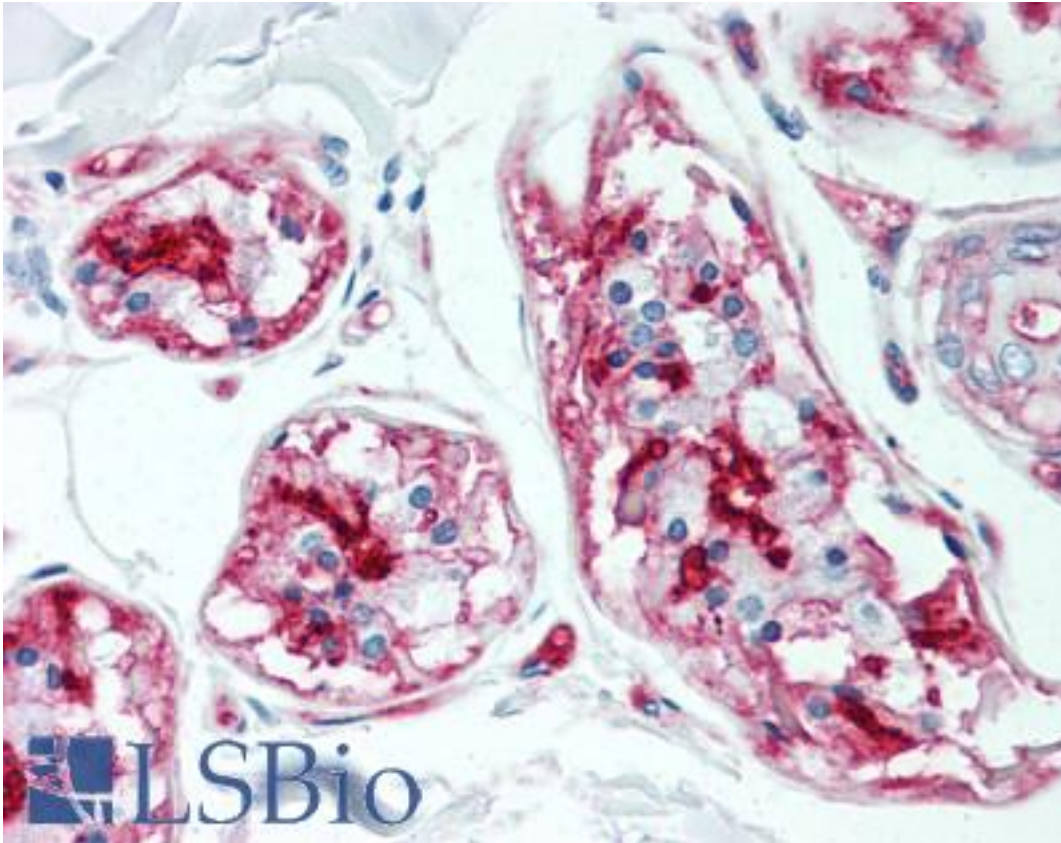


| CD59 Mouse anti-Human Monoclonal (MEM-43) Antibody - LS-B2106 - LSBio | |
|---|--|
| CatalogID: | LS-B2106 |
| Validation: | This antibody replaces catalog number LS-C11528. It has been validated for use in the following assays: IHC-P. |
| Target: | CD59 molecule, complement regulatory protein |
| Synonyms: | CD59 Antibody, 16.3A5 Antibody, 1F5 Antibody, 1F5 antigen Antibody, CD59 glycoprotein Antibody, EL32 Antibody, EJ16 Antibody, G344 Antibody, HRF-20 Antibody, MAC-IP Antibody, MACIF Antibody, Ly-6-like protein Antibody, MEM43 Antibody, MIRL Antibody, MEM43 antigen Antibody, MIN2 Antibody, MIN3 Antibody, MSK21 Antibody, p18-20 Antibody, Protectin Antibody, MAC-inhibitory protein Antibody, MIC11 Antibody, T cell-activating protein Antibody, CD59 antigen Antibody, EJ30 Antibody, HRF20 Antibody, Human leukocyte antigen MIC11 Antibody, Lymphocytic antigen CD59/MEM43 Antibody, MIN1 Antibody |
| Host | CD59 antibody was produced in Mouse |
| Clonality: | Monoclonal |
| Isotype: | IgG2a |
| Clone Name: | MEM-43 |
| Immunogen Species: | CD59 antibody was raised against Human |
| Reactivity: | Human |
| Purification: | Purified IgG |
| Presentation: | PBS, 0.09% sodium azide. |
| Recommended Storage: | +4°C or -20°C, Avoid repeated freezing and thawing. |
| Usage Summary: | <p>Immunohistochemistry: LS-B2106 was validated for use in immunohistochemistry on a panel of 21 formalin-fixed, paraffin-embedded (FFPE) human tissues after heat induced antigen retrieval in pH 6.0 citrate buffer. After incubation with the primary antibody, slides were incubated with biotinylated secondary antibody, followed by alkaline phosphatase-streptavidin and chromogen. The stained slides were evaluated by a pathologist to confirm staining specificity. The optimal working concentration for LS-B2106 was determined to be 5 ug/ml. Flow Cytometry: Use 10 ul of the suggested working dilution to label 10⁶ cells in 100ul.</p> <p>Immunohistochemistry: This product requires antigen retrieval using heat treatment methods prior to staining of paraffin sections. Sodium citrate buffer pH6.0 is recommended for this purpose. Histology Positive Control Tissue: Tonsil.</p> |
| Uses: | IHC - Paraffin (5 µg/ml), IHC - Frozen, Western blot, Immunoprecipitation, Flow Cytometry, ELISA (Optimal dilution to be determined by the researcher) |
| Size: | 50 µg |
| Concentration: | 1 mg/ml |

Immunohistochemistry Image:



Anti-CD59 antibody IHC of human skin, sweat glands. Immunohistochemistry of formalin-fixed, paraffin-embedded tissue after heat-induced antigen retrieval. Antibody LS-B2106 concentration 5 ug/ml.

Requested From:

Japan

Laboratory Reagent For In Vitro Research Use Only

Not for resale without prior written consent from LifeSpan BioSciences, Inc.

Created on 9/23/2014

© 2014 LifeSpan BioSciences