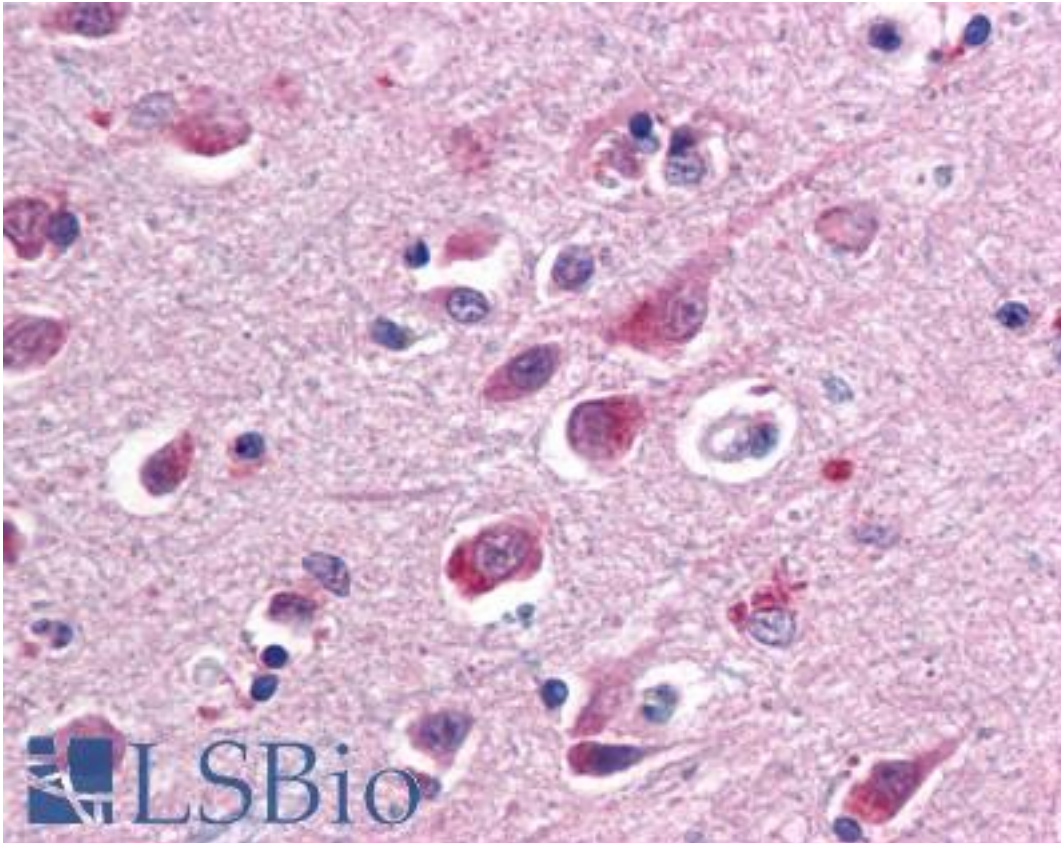


SARM1 / SARM Mouse anti-Human Monoclonal (Sarmy-1) Antibody - LS-B21 - LSBio	
CatalogID:	LS-B21
Validation:	This antibody replaces catalog number LS-C18721. It has been validated for use in the following assays: IHC.
Target:	sterile alpha and TIR motif containing 1 (SARM1)
Synonyms:	SARM1 Antibody, Tir-1 homolog Antibody, SARM Antibody, KIAA0524 Antibody, SAMD2 Antibody
Host	SARM1 antibody was produced in Mouse
Clonality:	Monoclonal
Isotype:	IgG2b
Clone Name:	Sarmy-1
Immunogen Species:	SARM1 / SARM antibody was raised against Human
Antigen Type:	Synthetic peptide
Immunogen:	SARM1 / SARM antibody was raised against synthetic peptide from human SARM1 / SARM.
Reactivity:	Human
Purification:	Purified
Presentation:	PBS, 10% glycerol, 0.02% sodium azide.
Recommended Storage:	Long term: -70°C; Short term: +4°C
Usage Summary:	Immunohistochemistry: LS-B21 was validated for use in immunohistochemistry on a panel of 21 formalin-fixed, paraffin-embedded (FFPE) human tissues after heat induced antigen retrieval in pH 6.0 citrate buffer. After incubation with the primary antibody, slides were incubated with biotinylated secondary antibody, followed by alkaline phosphatase-streptavidin and chromogen. The stained slides were evaluated by a pathologist to confirm staining specificity. The optimal working concentration for LS-B21 was determined to be 10 ug/ml.
Uses:	IHC - Paraffin (10 µg/ml), Immunoprecipitation (1:200) (Optimal dilution to be determined by the researcher)
Size:	50 µg
Concentration:	1 mg/ml

Immunohistochemistry Image:



Anti-SARM1 / SARM antibody IHC of human brain, cortex. Immunohistochemistry of formalin-fixed, paraffin-embedded tissue after heat-induced antigen retrieval. Antibody LS-B21 concentration 10 ug/ml.

Requested From:

Japan

Laboratory Reagent For In Vitro Research Use Only

Not for resale without prior written consent from LifeSpan BioSciences, Inc.

Created on 9/23/2014

© 2014 LifeSpan BioSciences