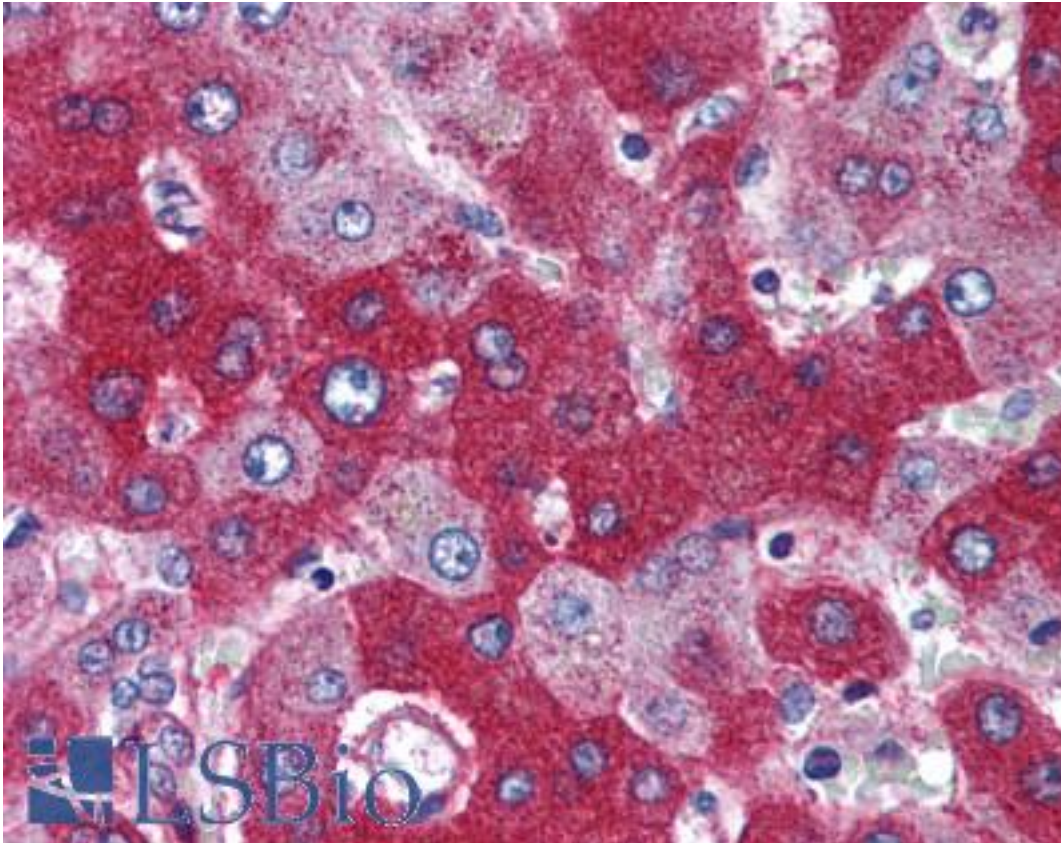


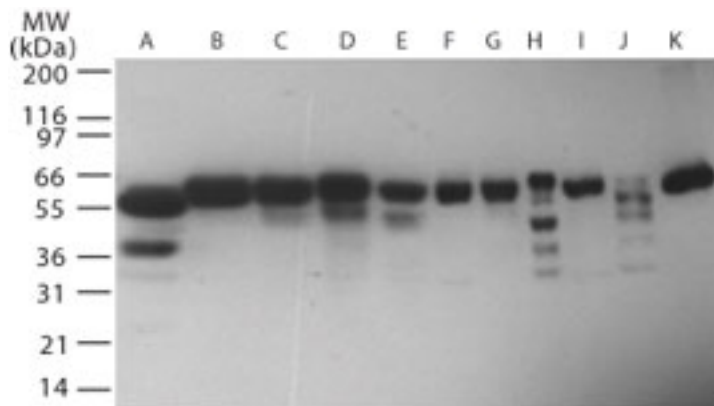
RNF216 / TRIAD3 Rabbit anti-Human Polyclonal (aa350-400) Antibody - LS-B2090 - LSBio	
CatalogID:	LS-B2090
Validation:	This antibody replaces catalog number LS-C834. It has been validated for use in the following assays: IHC-P.
Target:	ring finger protein 216 (RNF216)
Synonyms:	RNF216 Antibody, TRIAD3 Antibody, UBCE7IP1 Antibody, Ring finger protein 216 Antibody, U711 Antibody, ZIN Antibody
Family / Subfamily:	Zinc Finger
Host	RNF216 antibody was produced in Rabbit
Clonality:	Polyclonal
Isotype:	IgG
Immunogen Species:	RNF216 / TRIAD3 antibody was raised against Human
Antigen Type:	Synthetic peptide
Immunogen:	RNF216 / TRIAD3 antibody was raised against synthetic peptide from human RNF216 / TRIAD3.
Specificity:	KLH-conjugated synthetic peptide corresponding to a portion of human TRIAD3 between amino acids 350-400.
Epitope:	aa350-400
Reactivity:	Human
Purification:	Protein G purified
Presentation:	PBS, 0.2% gelatin, 0.05% sodium azide.
Recommended Storage:	Short term 4°C, long term aliquot and store at -20°C, avoid freeze thaw cycles.
Usage Summary:	Immunohistochemistry: LS-B2090 was validated for use in immunohistochemistry on a panel of 21 formalin-fixed, paraffin-embedded (FFPE) human tissues after heat induced antigen retrieval in pH 6.0 citrate buffer. After incubation with the primary antibody, slides were incubated with biotinylated secondary antibody, followed by alkaline phosphatase-streptavidin and chromogen. The stained slides were evaluated by a pathologist to confirm staining specificity. The optimal working concentration for LS-B2090 was determined to be 5 ug/ml.
Uses:	IHC - Paraffin (5 µg/ml), Western blot (1 - 3 µg/ml) (Optimal dilution to be determined by the researcher)
Size:	50 µg
Concentration:	0.5 mg/ml

Immunohistochemistry Image:



Anti-RNF216 / TRIAD3 antibody IHC of human liver. Immunohistochemistry of formalin-fixed, paraffin-embedded tissue after heat-induced antigen retrieval. Antibody LS-B2090 concentration 5 ug/ml.

Western Blot Image:



Western blot of TRIAD3 in human (A) Brain; (B) Heart; (C) Small Intestine; (D) Kidney; (E) Liver; (F) Lung; (G) Skeletal Muscle; (H) Pancreas; (I) Spleen; (J) Ovary; (K) Testis using antibody at 1 ug/ml.

Requested From:

Japan

Laboratory Reagent For In Vitro Research Use Only

Not for resale without prior written consent from LifeSpan BioSciences, Inc.

Created on 9/23/2014

© 2014 LifeSpan BioSciences