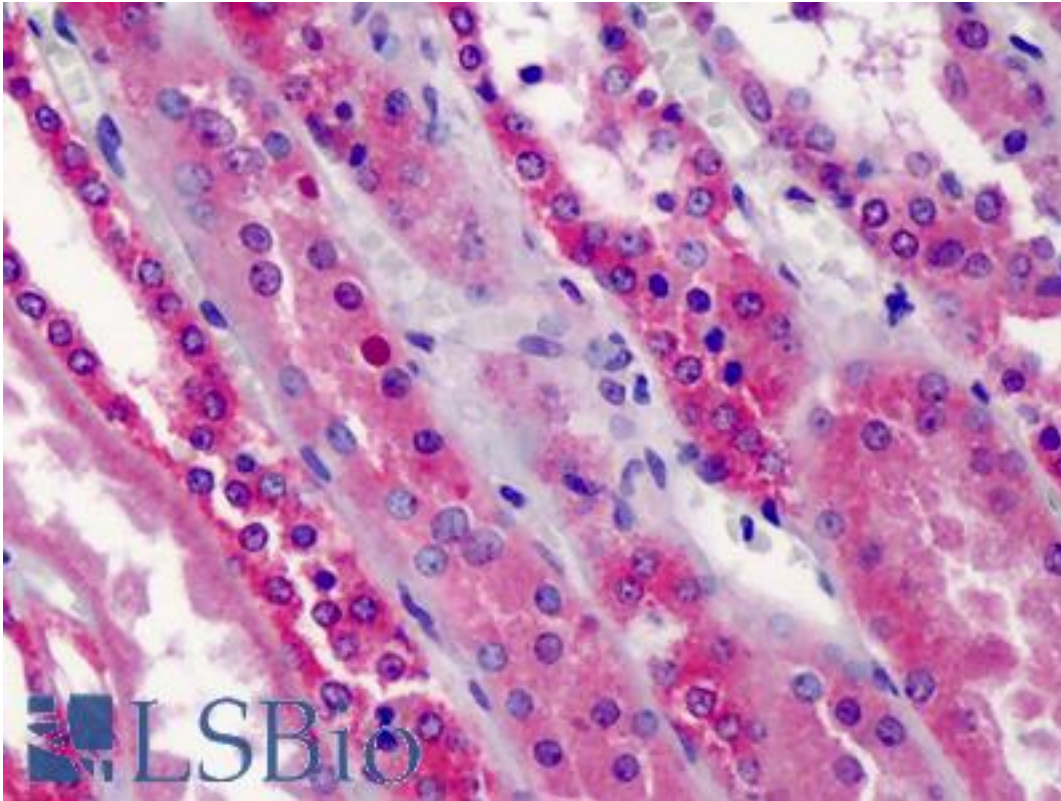


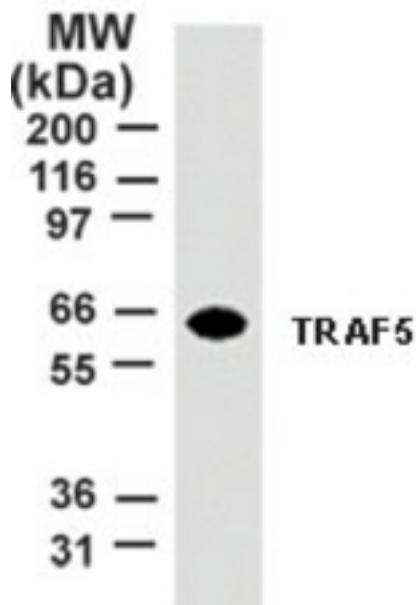
TRAF5 Mouse anti-Human Monoclonal (aa77-186) (55A219 ) Antibody - LS-B2088 - LSBio	
<b>CatalogID:</b>	LS-B2088
<b>Validation:</b>	This antibody replaces catalog number LS-C603. It has been validated for use in the following assays: IHC-P.
<b>Target:</b>	TNF receptor-associated factor 5 (TRAF5)
<b>Synonyms:</b>	TRAF5 Antibody, RNF84 Antibody, MGC:39780 Antibody, RING finger protein 84 Antibody
<b>Host</b>	TRAF5 antibody was produced in Mouse
<b>Clonality:</b>	Monoclonal
<b>Isotype:</b>	IgG
<b>Clone Name:</b>	55A219
<b>Immunogen Species:</b>	TRAF5 antibody was raised against Human
<b>Immunogen:</b>	TRAF5 antibody was raised against a fusion protein corresponding to amino acids 77 to 186 of human TRAF5.
<b>Specificity:</b>	A fusion protein corresponding to amino acids 77 to 186 of human TRAF5.
<b>Epitope:</b>	aa77-186
<b>Reactivity:</b>	Human
<b>Purification:</b>	Protein G purified
<b>Presentation:</b>	PBS, 0.05% BSA, 0.05% sodium azide.
<b>Recommended Storage:</b>	Short term 4°C, long term aliquot and store at -20°C, avoid freeze thaw cycles.
<b>Usage Summary:</b>	Immunohistochemistry: LS-B2088 was validated for use in immunohistochemistry on a panel of 21 formalin-fixed, paraffin-embedded (FFPE) human tissues after heat induced antigen retrieval in pH 6.0 citrate buffer. After incubation with the primary antibody, slides were incubated with biotinylated secondary antibody, followed by alkaline phosphatase-streptavidin and chromogen. The stained slides were evaluated by a pathologist to confirm staining specificity. The optimal working concentration for LS-B2088 was determined to be 10 ug/ml.
<b>Uses:</b>	IHC - Paraffin (10 µg/ml), Western blot (2 µg/ml) (Optimal dilution to be determined by the researcher)
<b>Size:</b>	50 µg
<b>Concentration:</b>	0.5 mg/ml

**Immunohistochemistry Image:**



Anti-TRAF5 antibody IHC of human kidney. Immunohistochemistry of formalin-fixed, paraffin-embedded tissue after heat-induced antigen retrieval. Antibody LS-B2088 concentration 10 ug/ml.

**Western Blot Image:**



Western blot of TRAF5 using antibody at 2 ug/ml dilution against 10 ug of HeLa cell lysate.

Requested From:

Japan

Laboratory Reagent For In Vitro Research Use Only

Not for resale without prior written consent from LifeSpan BioSciences, Inc.

Created on 9/23/2014

© 2014 LifeSpan BioSciences