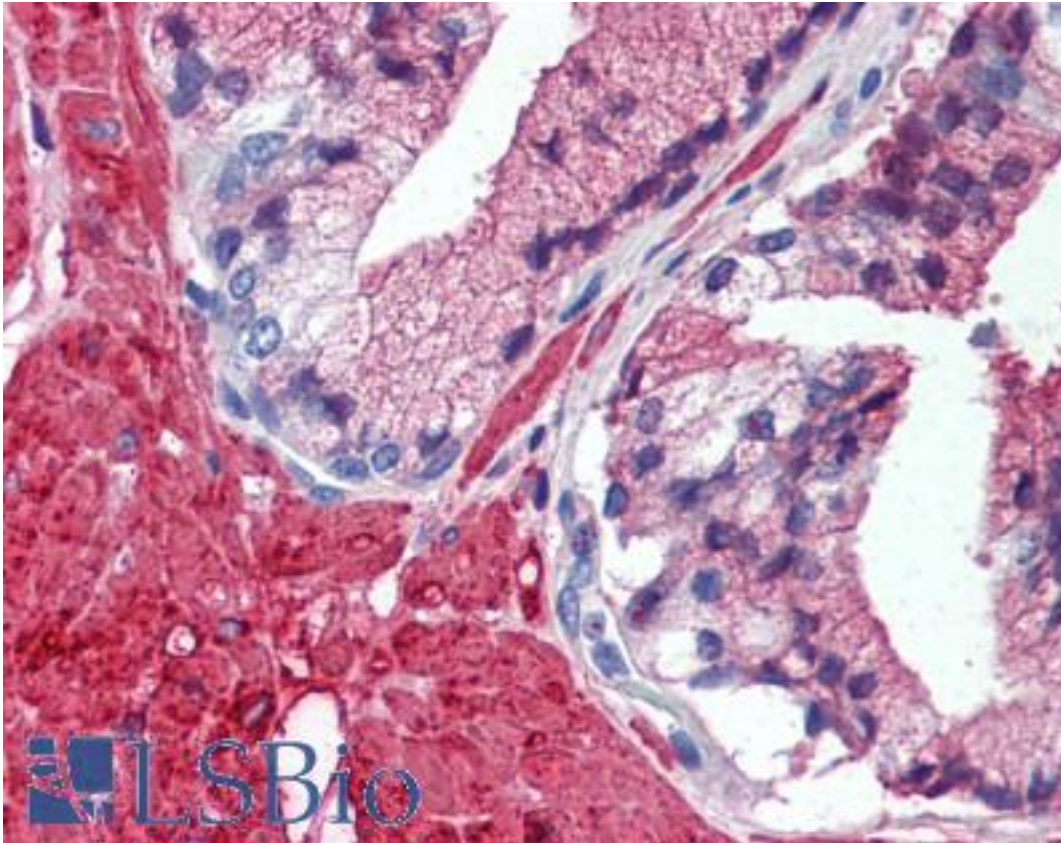


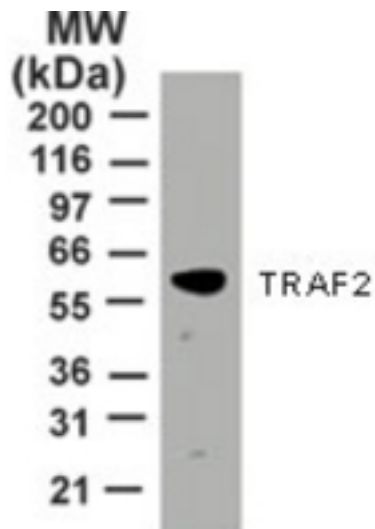
TRAP / TRAF2 Mouse anti-Human Monoclonal (aa205-222) (33A1293) Antibody - LS-B2087 - LSBio	
CatalogID:	LS-B2087
Validation:	This antibody replaces catalog number LS-C602. It has been validated for use in the following assays: IHC-P.
Target:	TNF receptor-associated factor 2 (TRAF2)
Synonyms:	TRAF2 Antibody, MGC:45012 Antibody, TRAP3 Antibody
Host	TRAF2 antibody was produced in Mouse
Clonality:	Monoclonal
Isotype:	IgG
Clone Name:	33A1293
Immunogen Species:	TRAP / TRAF2 antibody was raised against Human
Immunogen:	TRAP / TRAF2 antibody was raised against a fusion protein corresponding to amino acids 205 to 222 of human TRAF2.
Specificity:	A fusion protein corresponding to amino acids 205 to 222 of human TRAF2.
Epitope:	aa205-222
Reactivity:	Human
Purification:	Protein G purified
Presentation:	PBS, 0.2% gelatin, 0.05% sodium azide.
Recommended Storage:	Short term 4°C, long term aliquot and store at -20°C, avoid freeze thaw cycles.
Usage Summary:	Immunohistochemistry: LS-B2087 was validated for use in immunohistochemistry on a panel of 21 formalin-fixed, paraffin-embedded (FFPE) human tissues after heat induced antigen retrieval in pH 6.0 citrate buffer. After incubation with the primary antibody, slides were incubated with biotinylated secondary antibody, followed by alkaline phosphatase-streptavidin and chromogen. The stained slides were evaluated by a pathologist to confirm staining specificity. The optimal working concentration for LS-B2087 was determined to be 5 ug/ml.
Uses:	IHC - Paraffin (5 µg/ml), Western blot (2 µg/ml) (Optimal dilution to be determined by the researcher)
Size:	50 µg
Concentration:	0.5 mg/ml

Immunohistochemistry Image:



Anti-TRAF2 antibody IHC of human prostate. Immunohistochemistry of formalin-fixed, paraffin-embedded tissue after heat-induced antigen retrieval. Antibody LS-B2087 concentration 5 ug/ml.

Western Blot Image:



Western blot of 30 ug of HeLa cell lysate using antibody at 2 ug/ml.

Requested From:

Japan

Laboratory Reagent For In Vitro Research Use Only

Not for resale without prior written consent from LifeSpan BioSciences, Inc.

Created on 9/23/2014

© 2014 LifeSpan BioSciences