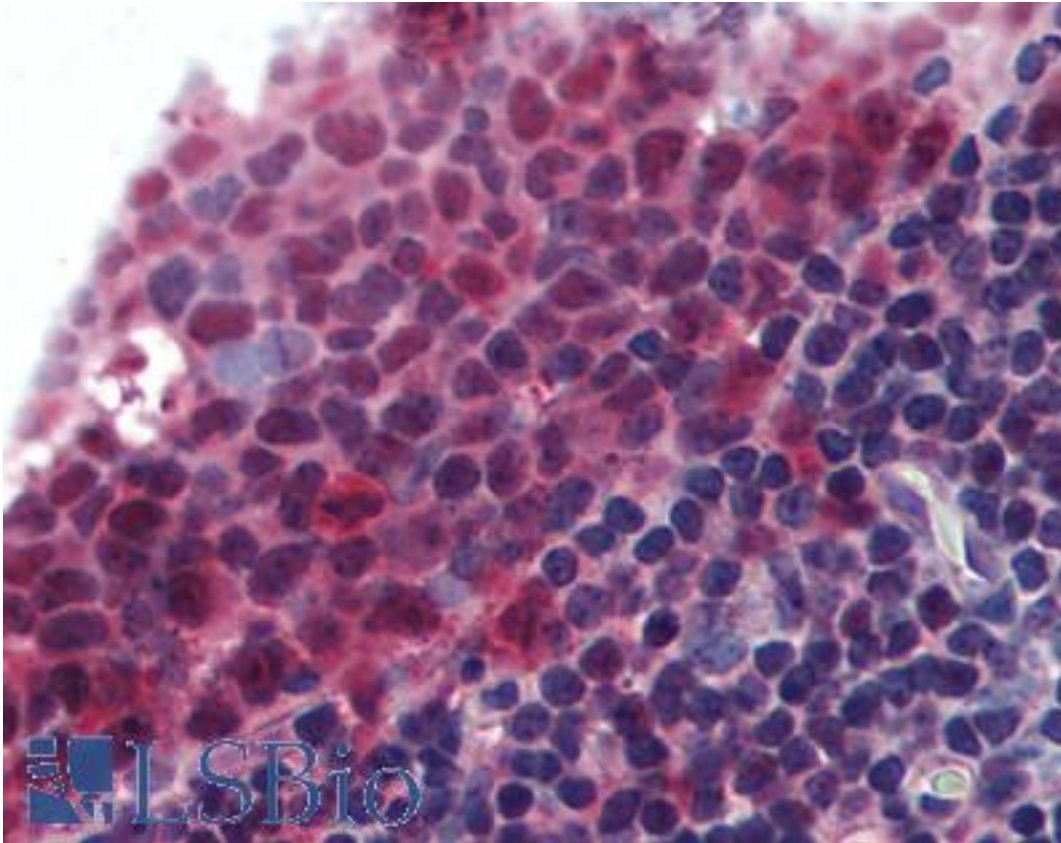


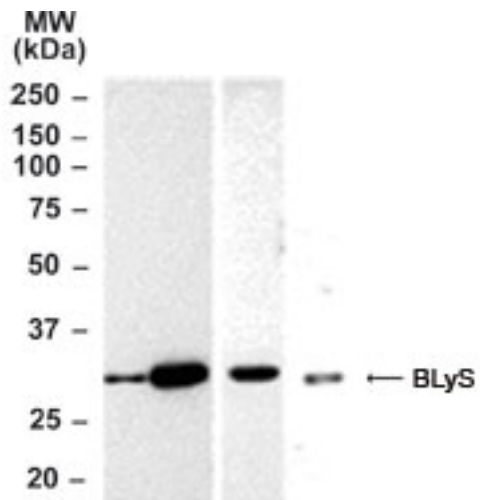
BAFF Rabbit anti-Human Polyclonal (aa254-269) Antibody - LS-B2081 - LSBio	
<b>CatalogID:</b>	LS-B2081
<b>Validation:</b>	This antibody replaces catalog number LS-C639. It has been validated for use in the following assays: IHC-P.
<b>Target:</b>	tumor necrosis factor (ligand) superfamily, member 13b (TNFSF13B)
<b>Synonyms:</b>	TNFSF13B Antibody, B-cell-activating factor Antibody, BAFF Antibody, ApoL related ligand TALL-1 Antibody, B-lymphocyte stimulator Antibody, CD257 Antibody, BLYS Antibody, Delta4 BAFF Antibody, Delta BAFF Antibody, TALL-1 Antibody, TALL1 Antibody, ZTNF4 Antibody, THANK Antibody, B lymphocyte stimulator Antibody, CD257 antigen Antibody, TNFSF20 Antibody
<b>Family / Subfamily:</b>	TNF / not assigned-TNF
<b>Host</b>	TNFSF13B antibody was produced in Rabbit
<b>Clonality:</b>	Polyclonal
<b>Isotype:</b>	IgG
<b>Immunogen Species:</b>	BAFF antibody was raised against Human
<b>Antigen Type:</b>	Synthetic peptide
<b>Immunogen:</b>	BAFF antibody was raised against synthetic peptide from human TNFSF13B / BAFF.
<b>Specificity:</b>	A C-terminal peptide corresponding to amino acids 254-269 of human BLYS.
<b>Epitope:</b>	aa254-269
<b>Reactivity:</b>	Human, Mouse
<b>Purification:</b>	Protein G purified
<b>Presentation:</b>	PBS, 0.05% BSA, 0.05% sodium azide.
<b>Recommended Storage:</b>	Short term 4°C, long term aliquot and store at -20°C, avoid freeze thaw cycles.
<b>Usage Summary:</b>	Immunohistochemistry: LS-B2081 was validated for use in immunohistochemistry on a panel of 21 formalin-fixed, paraffin-embedded (FFPE) human tissues after heat induced antigen retrieval in pH 6.0 citrate buffer. After incubation with the primary antibody, slides were incubated with biotinylated secondary antibody, followed by alkaline phosphatase-streptavidin and chromogen. The stained slides were evaluated by a pathologist to confirm staining specificity. The optimal working concentration for LS-B2081 was determined to be 10 ug/ml.
<b>Uses:</b>	IHC - Paraffin (10 µg/ml), Western blot (0.5 - 2 µg/ml) (Optimal dilution to be determined by the researcher)
<b>Size:</b>	50 µg
<b>Concentration:</b>	0.5 mg/ml

**Immunohistochemistry Image:**



Anti-BAFF antibody IHC of human tonsil. Immunohistochemistry of formalin-fixed, paraffin-embedded tissue after heat-induced antigen retrieval. Antibody LS-B2081 concentration 10 ug/ml.

**Western Blot Image:**



Western blot of BAFF/BlyS in mouse and human cell lysates. Lane A: mouse testis, Lane B: mouse thymus, Lane C: mouse spleen, and Lane D: HL-60 cells (human).

Requested From:

Japan

Laboratory Reagent For In Vitro Research Use Only

Not for resale without prior written consent from LifeSpan BioSciences, Inc.

Created on 9/23/2014

© 2014 LifeSpan BioSciences