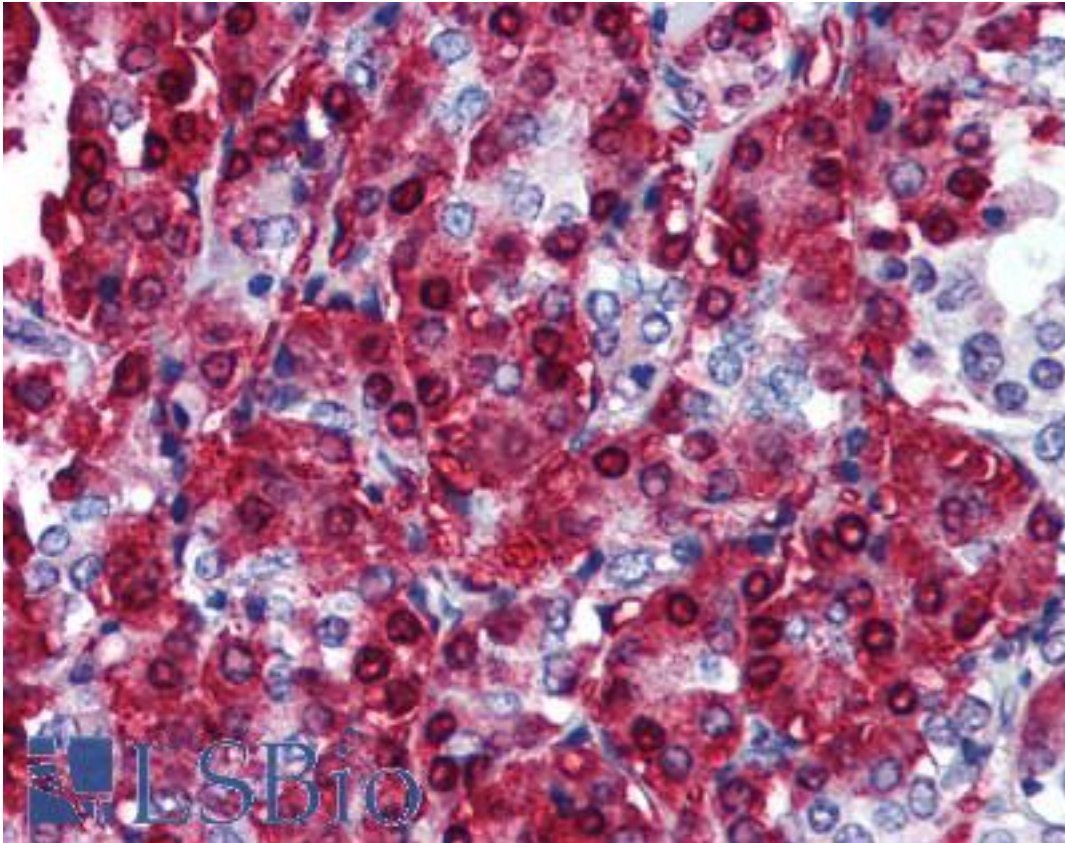


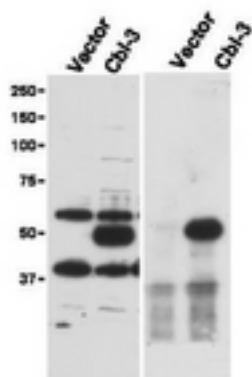
CBLC Rabbit anti-Human Polyclonal (aa444-458) Antibody - LS-B208 - LSBio	
CatalogID:	LS-B208
Validation:	This antibody replaces catalog number LS-C19015. It has been validated for use in the following assays: IHC.
Target:	Cbl proto-oncogene C, E3 ubiquitin protein ligase (CBLC)
Synonyms:	CBLC Antibody, CBL-3 Antibody, CBL3 Antibody, RNF57 Antibody, SH3-binding protein CBL-C Antibody, SH3-binding protein CBL-3 Antibody, CBL-c Antibody, CBL-SL Antibody, RING finger protein 57 Antibody
Host	CBLC antibody was produced in Rabbit
Clonality:	Polyclonal
Immunogen Species:	CBLC antibody was raised against Human
Antigen Type:	Synthetic peptide
Immunogen:	CBLC antibody was raised against synthetic peptide from human CBLC.
Specificity:	Amino acids 444-458 of Human Cbl-c.
Epitope:	aa444-458
Reactivity:	Human
Purification:	Immunoaffinity purified
Presentation:	0.02 M potassium phosphate, 0.15 M sodium chloride, pH 7.2, 0.01% sodium azide.
Recommended Storage:	+4°C or -20°C, Avoid repeated freezing and thawing.
Usage Summary:	Immunohistochemistry: LS-B208 was validated for use in immunohistochemistry on a panel of 21 formalin-fixed, paraffin-embedded (FFPE) human tissues after heat induced antigen retrieval in pH 6.0 citrate buffer. After incubation with the primary antibody, slides were incubated with biotinylated secondary antibody, followed by alkaline phosphatase-streptavidin and chromogen. The stained slides were evaluated by a pathologist to confirm staining specificity. The optimal working concentration for LS-B208 was determined to be 5 ug/ml.
Uses:	IHC - Paraffin (5 µg/ml), Immunofluorescence, Western blot (1:500 - 1:3000), Immunoprecipitation, ELISA (1:10000 - 1:50000) (Optimal dilution to be determined by the researcher)
Size:	50 µg
Concentration:	1.42 mg/ml

Immunohistochemistry Image:



Anti-CBLC antibody IHC of human pancreas. Immunohistochemistry of formalin-fixed, paraffin-embedded tissue after heat-induced antigen retrieval. Antibody LS-B208 concentration 5 ug/ml.

Western Blot Image:



Anti-Cbl-c Antibody - Immunoprecipitation and Western Blot. Immunoprecipitation and Western blot of Affinity Purified anti-Cbl-c antibody shows detection of a pre-dominant band at ~52 kD corresponding to Cbl-c (arrowhead) in transfected cell lysates (left panel). Lysates are from Hek 293T cells transfected with empty vector or with Cbl-c. The predicted size of Cbl-c is 52 kD. Size markers in kD are shown to the left of the panel. The right panel shows western blotting after first immunoprecipitating with Rabbit anti-Cbl-c followed by western blotting using a Goat anti-Cbl-c antibody. Personal Communication. Stan Lipkowitz, NCI, NIH, Bethesda, MD.

Requested From:	Japan
Laboratory Reagent For In Vitro Research Use Only	
Not for resale without prior written consent from LifeSpan BioSciences, Inc.	
Created on 9/23/2014	
© 2014 LifeSpan BioSciences	