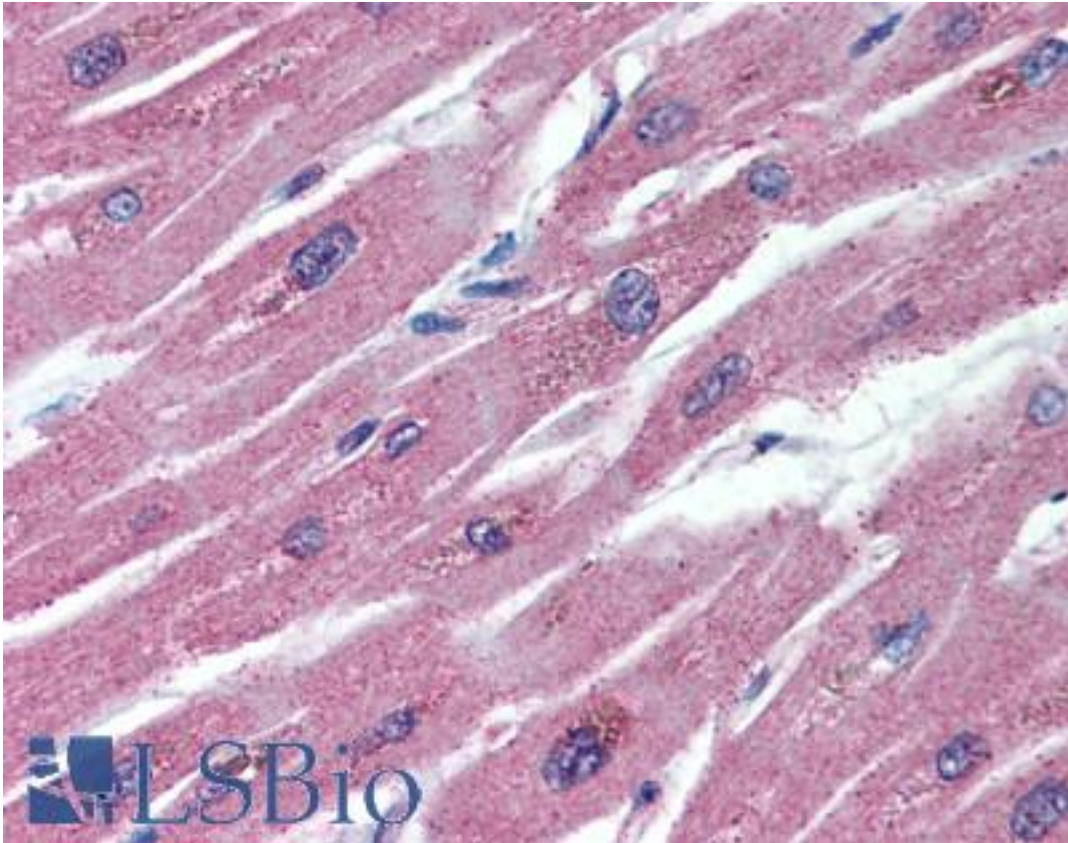


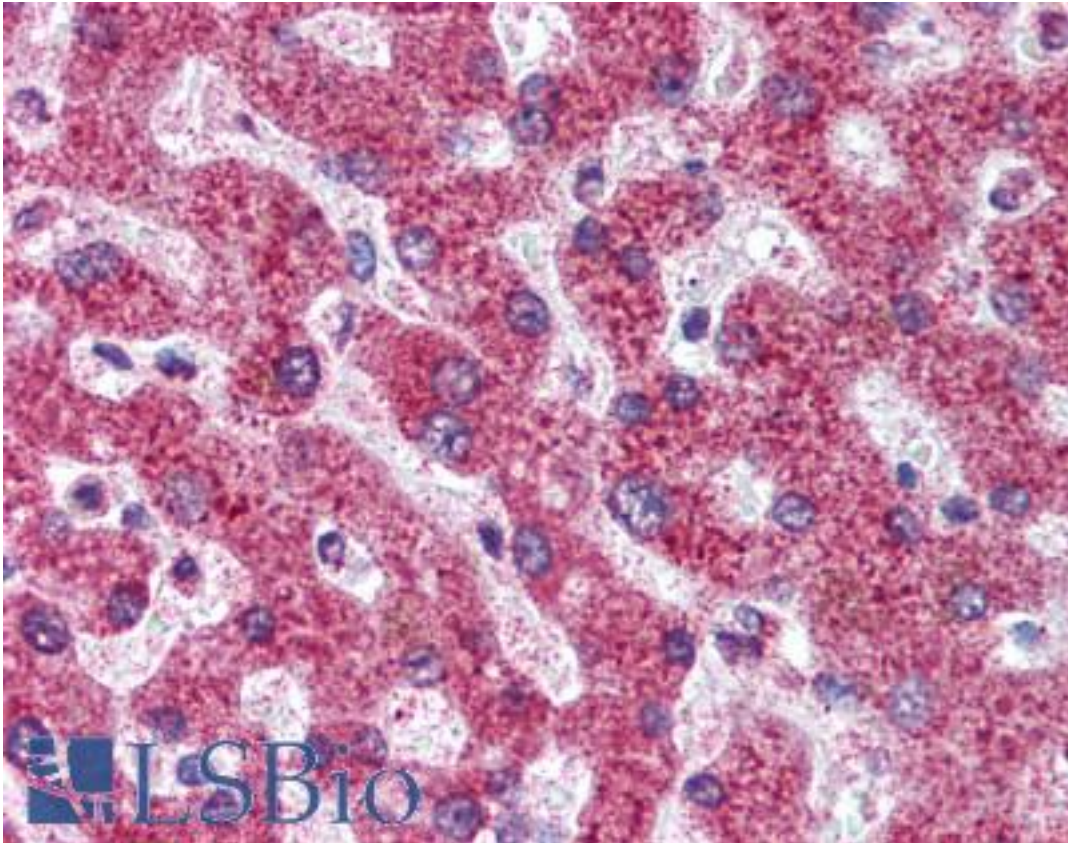
Osteoprotegerin / OPG Mouse anti-Human Monoclonal (aa20-37) (98A1071) Antibody - LS-B2078 - LSBio	
<b>CatalogID:</b>	LS-B2078
<b>Validation:</b>	This antibody replaces catalog number LS-C539. It has been validated for use in the following assays: IHC-P.
<b>Target:</b>	tumor necrosis factor receptor superfamily, member 11b (TNFRSF11B)
<b>Synonyms:</b>	TNFRSF11B Antibody, OCIF Antibody, OPG Antibody, Osteoprotegerin Antibody, TR1 Antibody
<b>Family / Subfamily:</b>	TNF Receptor / not assigned-TNF Receptor
<b>Host</b>	TNFRSF11B antibody was produced in Mouse
<b>Clonality:</b>	Monoclonal
<b>Isotype:</b>	IgG
<b>Clone Name:</b>	98A1071
<b>Immunogen Species:</b>	Osteoprotegerin / OPG antibody was raised against Human
<b>Immunogen:</b>	Osteoprotegerin / OPG antibody was raised against a peptide corresponding to the amino acids 20-37 TQETFPPKYLHYDEETSH of human OPG was used to immunize mice. The specificity was tested on recombinant OPG by western blot analysis. Percent identity by BLAST analysis: Human, Gibbon (100%); Monkey (94%); Marmoset, Panda, Dog, Horse, Pig, Opossum (89%); Mouse, Rat, Elephant, Bovine (83%).
<b>Specificity:</b>	A peptide corresponding to the amino acids 20-37 TQETFPPKYLHYDEETSH of human OPG was used to immunize mice. The specificity was tested on recombinant OPG by western blot analysis.
<b>Epitope:</b>	aa20-37
<b>Reactivity:</b>	Human, Gibbon
<b>Predicted Reactivity:</b>	Monkey
<b>Purification:</b>	Protein G purified
<b>Presentation:</b>	PBS, 0.05% BSA, 0.05% sodium azide. Sourced in TCS.
<b>Recommended Storage:</b>	Long term: -20°C; Short term: +4°C. Avoid repeat freeze-thaw cycles.
<b>Usage Summary:</b>	Immunohistochemistry: LS-B2078 was validated for use in immunohistochemistry on a panel of 21 formalin-fixed, paraffin-embedded (FFPE) human tissues after heat induced antigen retrieval in pH 6.0 citrate buffer. After incubation with the primary antibody, slides were incubated with biotinylated secondary antibody, followed by alkaline phosphatase-streptavidin and chromogen. The stained slides were evaluated by a pathologist to confirm staining specificity. The optimal working concentration for LS-B2078 was determined to be 5 ug/ml.
<b>Uses:</b>	IHC - Paraffin (5 ug/ml), Western blot (Optimal dilution to be determined by the researcher)
<b>Size:</b>	50 ug
<b>Concentration:</b>	0.5 mg/ml

**Immunohistochemistry Image:**



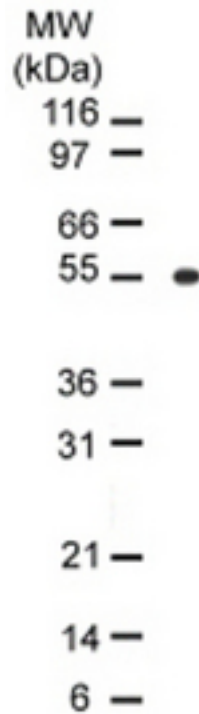
Anti-Osteoprotegerin antibody IHC of human heart. Immunohistochemistry of formalin-fixed, paraffin-embedded tissue after heat-induced antigen retrieval. Antibody LS-B2078 concentration 5 ug/ml.

**Immunohistochemistry Image:**



Anti-Osteoprotegerin antibody IHC of human liver. Immunohistochemistry of formalin-fixed, paraffin-embedded tissue after heat-induced antigen retrieval. Antibody LS-B2078 concentration 5 ug/ml.

**Western Blot Image:**



Western blot analysis for OPG with antibody against Daudi cell lysate. Daudi cell lysate blot was incubated with antibody at a dilution of 1  $\mu\text{g/ml}$  and the immunoreactivity was detected by enhanced chemiluminescence.

**Requested From:**

Japan

Laboratory Reagent For In Vitro Research Use Only

Not for resale without prior written consent from LifeSpan BioSciences, Inc.

Created on 9/23/2014

© 2014 LifeSpan BioSciences