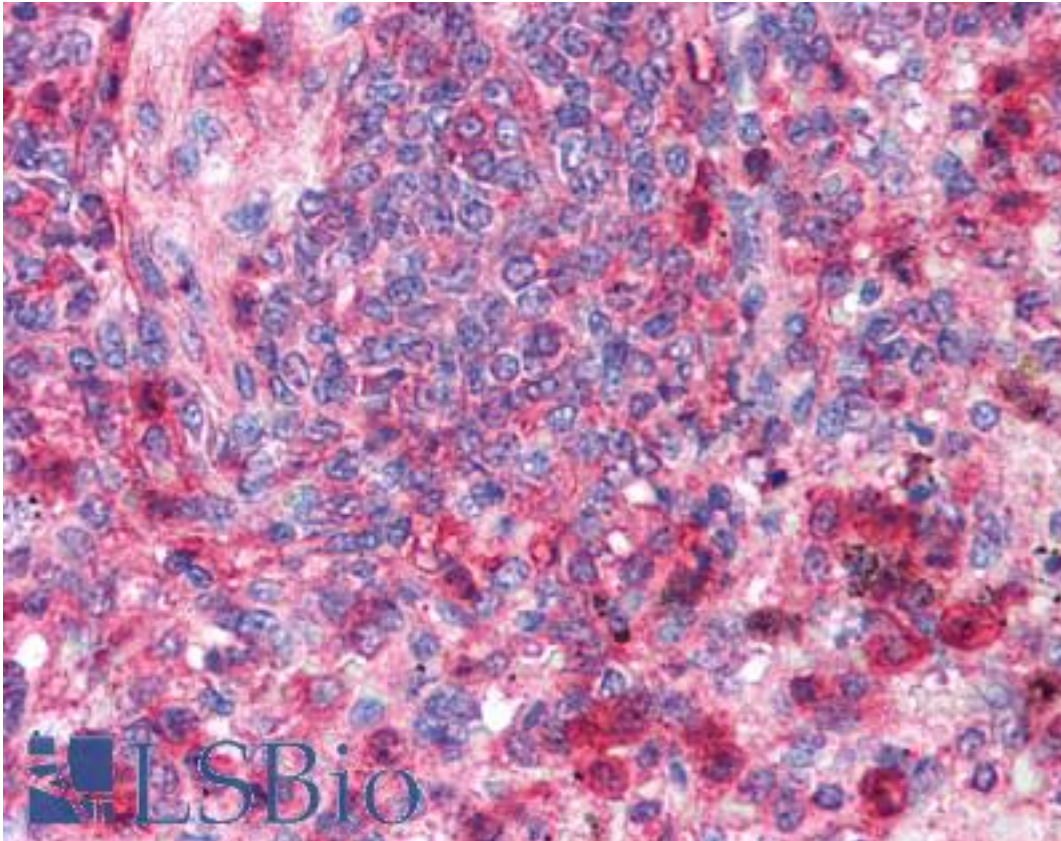


TRAF6 Rabbit anti-Human Polyclonal (C-Terminus) Antibody - LS-B207 - LSBio

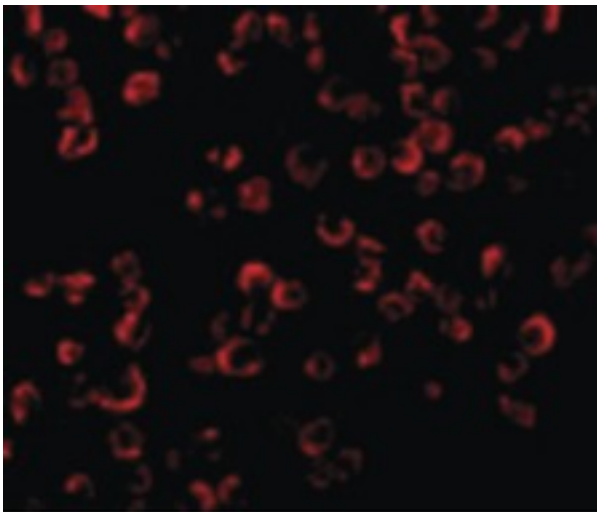
CatalogID:	LS-B207
Validation:	This antibody replaces catalog number LS-C428. It has been validated for use in the following assays: IHC.
Target:	TNF receptor-associated factor 6, E3 ubiquitin protein ligase (TRAF6)
Synonyms:	TRAF6 Antibody, RING finger protein 85 Antibody, MGC:3310 Antibody, RNF85 Antibody
Host	TRAF6 antibody was produced in Rabbit
Clonality:	Polyclonal
Immunogen Species:	TRAF6 antibody was raised against Human
Antigen Type:	Synthetic peptide
Immunogen:	TRAF6 antibody was raised against synthetic peptide from human TRAF6.
Specificity:	peptide corresponding to 14 amino acids near the C-terminus of human TRAF6
Epitope:	C-Terminus
Reactivity:	Human, Mouse, Rat
Purification:	Ion exchange chromatography
Presentation:	PBS, 0.02% sodium azide.
Recommended Storage:	Short term 4°C, long term aliquot and store at -20°C, avoid freeze thaw cycles. Store undiluted.
Usage Summary:	Immunohistochemistry: LS-B207 was validated for use in immunohistochemistry on a panel of 21 formalin-fixed, paraffin-embedded (FFPE) human tissues after heat induced antigen retrieval in pH 6.0 citrate buffer. After incubation with the primary antibody, slides were incubated with biotinylated secondary antibody, followed by alkaline phosphatase-streptavidin and chromogen. The stained slides were evaluated by a pathologist to confirm staining specificity. The optimal working concentration for LS-B207 was determined to be 2.5 ug/ml.
Uses:	IHC - Paraffin (2.5 µg/ml), ICC, Western blot (1 - 2 µg/ml) (Optimal dilution to be determined by the researcher)
Size:	50 µg
Concentration:	1 mg/ml

Immunohistochemistry Image:



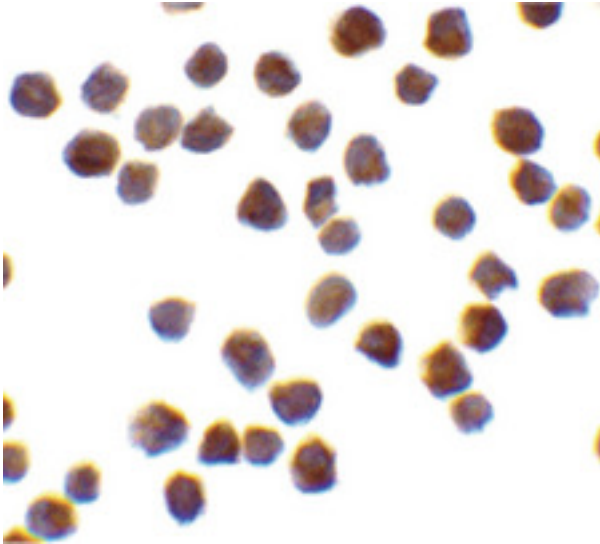
Anti-TRAF6 antibody IHC of human spleen. Immunohistochemistry of formalin-fixed, paraffin-embedded tissue after heat-induced antigen retrieval. Antibody LS-B207 concentration 5 ug/ml.

Immunofluorescence Image:



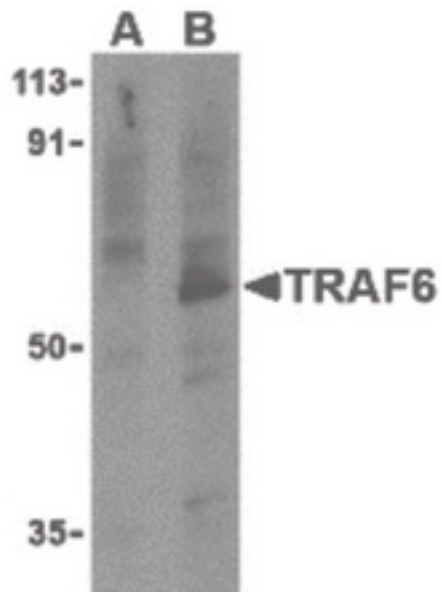
Immunofluorescence of TRAF6 in K562 cells with TRAF6 antibody at 20 ug/ml.

Immunocytochemistry Image:



Immunocytochemistry of TRAF6 in K562 cells with TRAF6 antibody at 0.5 ug/ml.

Western Blot Image:



Western blot of TRAF6 in PC-3 cell lysates with TRAF6 antibody at 1 ug/ml in the presence (A) or absence (B) of 1 ug blocking peptide.

Requested From:

Japan

Laboratory Reagent For In Vitro Research Use Only

Not for resale without prior written consent from LifeSpan BioSciences, Inc.

Created on 9/23/2014

© 2014 LifeSpan BioSciences