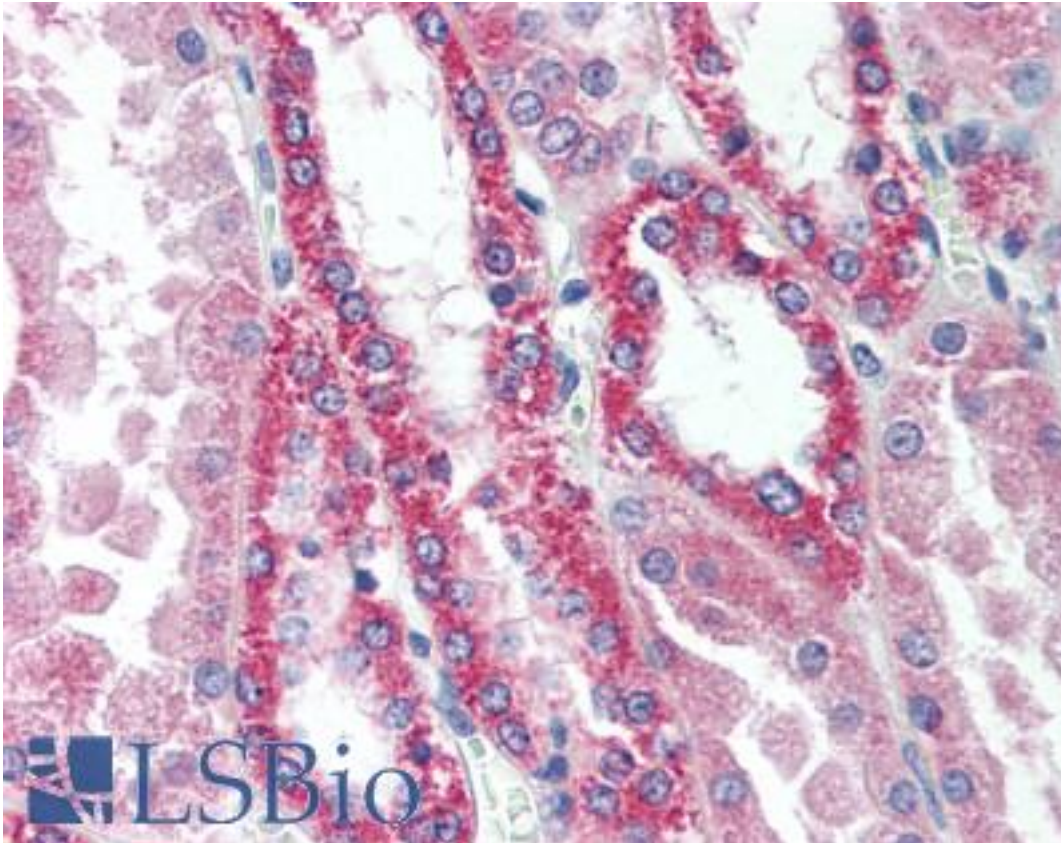


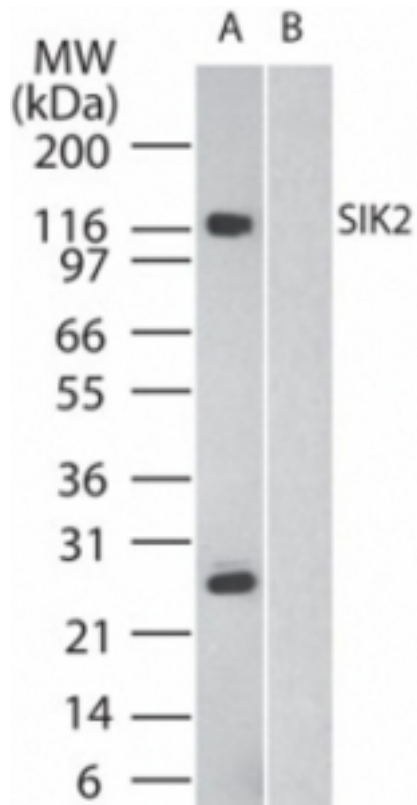
SIK2 / SNF1LK2 Rabbit anti-Human Polyclonal (aa100-150) Antibody - LS-B2068 - LSBio	
CatalogID:	LS-B2068
Validation:	This antibody replaces catalog number LS-C19398. It has been validated for use in the following assays: IHC-P.
Target:	salt-inducible kinase 2 (SIK2)
Synonyms:	SIK2 Antibody, KIAA0781 Antibody, LOH11CR1I Antibody, SNF1LK2 Antibody, QIK Antibody, Qin-induced kinase Antibody, Salt-inducible kinase 2 Antibody, SIK-2 Antibody, SNF1-like kinase 2 Antibody
Family / Subfamily:	Protein Kinase / CAMKL
Host	SIK2 antibody was produced in Rabbit
Clonality:	Polyclonal
Immunogen Species:	SIK2 / SNF1LK2 antibody was raised against Human
Specificity:	A portion of amino acids 100-150 of human SIK2 was used as the immunogen.
Epitope:	aa100-150
Reactivity:	Human, Chimpanzee, Mouse, Rat, Bovine, Dog
Purification:	Protein G purified
Presentation:	PBS, 0.05% BSA, 0.05% sodium azide
Recommended Storage:	Short term 4°C, long term aliquot and store at -20°C, avoid freeze thaw cycles.
Usage Summary:	Immunohistochemistry: LS-B2068 was validated for use in immunohistochemistry on a panel of 21 formalin-fixed, paraffin-embedded (FFPE) human tissues after heat induced antigen retrieval in pH 6.0 citrate buffer. After incubation with the primary antibody, slides were incubated with biotinylated secondary antibody, followed by alkaline phosphatase-streptavidin and chromogen. The stained slides were evaluated by a pathologist to confirm staining specificity. The optimal working concentration for LS-B2068 was determined to be 10 ug/ml.
Uses:	IHC - Paraffin (10 µg/ml), Western blot (1 - 3 µg/ml) (Optimal dilution to be determined by the researcher)
Size:	50 µg
Concentration:	0.5 mg/ml

Immunohistochemistry Image:



Anti-SIK2 / SNF1LK2 antibody IHC of human kidney. Immunohistochemistry of formalin-fixed, paraffin-embedded tissue after heat-induced antigen retrieval. Antibody LS-B2068 concentration 10 ug/ml.

Western Blot Image:



Western blot of SIK2 in human brain in the A) absence and B) presence of immunizing peptide, using antibody at 2 ug/ml.

Requested From:

Japan

Laboratory Reagent For In Vitro Research Use Only

Not for resale without prior written consent from LifeSpan BioSciences, Inc.

Created on 9/23/2014

© 2014 LifeSpan BioSciences