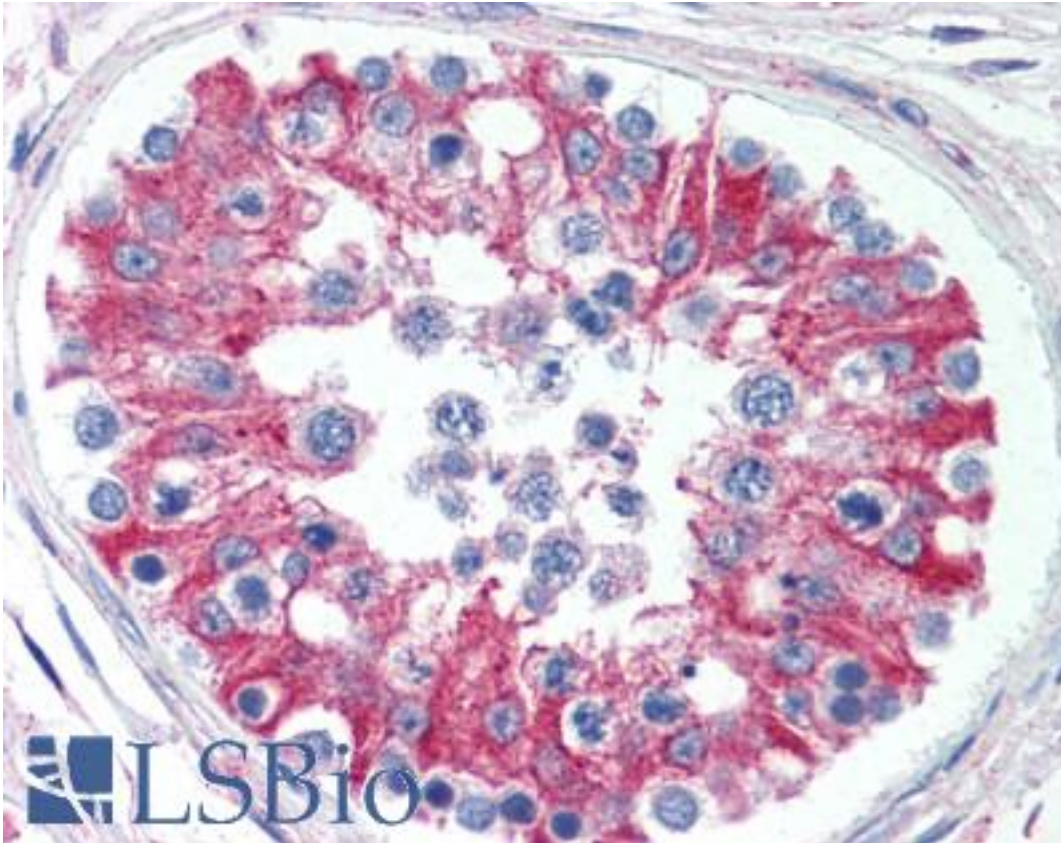


SMAD6 Rabbit anti-Human Polyclonal (aa85-99) Antibody - LS-B2065 - LSBio	
CatalogID:	LS-B2065
Validation:	This antibody replaces catalog number LS-C806. It has been validated for use in the following assays: IHC-P.
Target:	SMAD family member 6 (SMAD6)
Synonyms:	SMAD6 Antibody, AOVD2 Antibody, HSMAD6 Antibody, HsT17432 Antibody, SMAD 6 Antibody, MADH7 Antibody, Mothers against DPP homolog 6 Antibody, SMAD family member 6 Antibody, MAD homolog 6 Antibody, MADH6 Antibody
Host	SMAD6 antibody was produced in Rabbit
Clonality:	Polyclonal
Isotype:	IgG
Immunogen Species:	SMAD6 antibody was raised against Human
Antigen Type:	Synthetic peptide
Immunogen:	SMAD6 antibody was raised against this antibody was developed against synthetic peptides corresponding to amino acids 85-99 (RAGGPPRPMSEPGAG) and amino acids 372-388 (NLEQRSESVRRTRSKIG) of human SMAD6 (GenBank Accession No. AAH12986.1). These peptide sequences are specific to SMAD6, and have high homology to SMAD6 in multiple species. Percent identity by BLAST analysis: Human, Pig (100%); Dog, Bovine, Opossum (93%); Gibbon, Marmoset, Rat (87%); Elephant (80%).
Specificity:	Synthetic peptides corresponding to amino acids 85-99 (RAGGPPRPMSEPGAG) and amino acids 372-388 (NLEQRSESVRRTRSKIG) of human SMAD6 (GenBank Accession No. AAH12986.1). These peptide sequences are specific to SMAD6, and have high homology to SMAD6 in multiple species.
Epitope:	aa85-99
Reactivity:	Human, Pig
Predicted Reactivity:	Bovine, Dog
Purification:	Protein G purified
Presentation:	PBS, 0.05% BSA, 0.05% sodium azide.
Recommended Storage:	Short term 4°C, long term aliquot and store at -20°C, avoid freeze thaw cycles.
Usage Summary:	Immunohistochemistry: LS-B2065 was validated for use in immunohistochemistry on a panel of 21 formalin-fixed, paraffin-embedded (FFPE) human tissues after heat induced antigen retrieval in pH 6.0 citrate buffer. After incubation with the primary antibody, slides were incubated with biotinylated secondary antibody, followed by alkaline phosphatase-streptavidin and chromogen. The stained slides were evaluated by a pathologist to confirm staining specificity. The optimal working concentration for LS-B2065 was determined to be 5 µg/ml.
Uses:	IHC - Paraffin (5 µg/ml), Western blot (0.5 - 2 µg/ml) (Optimal dilution to be determined by the researcher)
Size:	50 µg
Concentration:	0.5 mg/ml

Immunohistochemistry Image:



Anti-SMAD6 antibody IHC of human testis. Immunohistochemistry of formalin-fixed, paraffin-embedded tissue after heat-induced antigen retrieval. Antibody LS-B2065 concentration 5 ug/ml.

Requested From:

Japan

Laboratory Reagent For In Vitro Research Use Only

Not for resale without prior written consent from LifeSpan BioSciences, Inc.

Created on 9/23/2014

© 2014 LifeSpan BioSciences