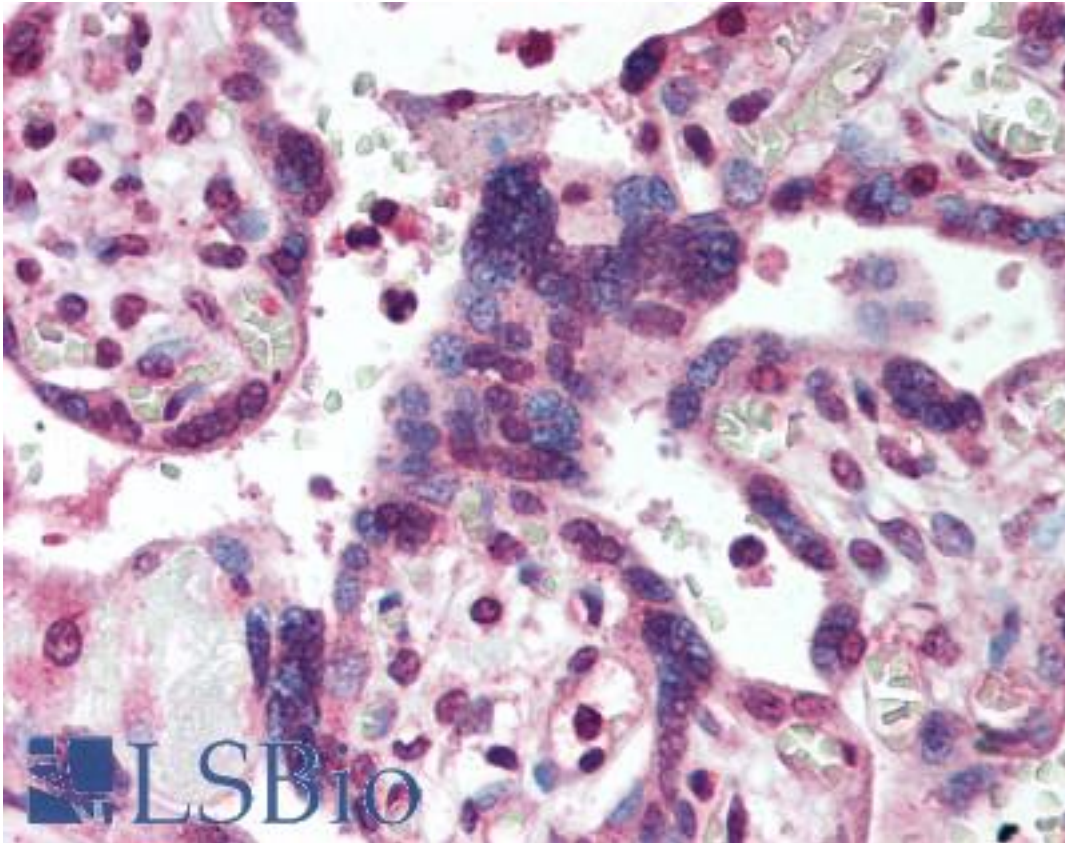


SMAD2 Rabbit anti-Human Polyclonal (aa234-249) Antibody - LS-B2063 - LSBio

CatalogID:	LS-B2063
Validation:	This antibody replaces catalog number LS-C19401. It has been validated for use in the following assays: IHC-P.
Target:	SMAD family member 2 (SMAD2)
Synonyms:	SMAD2 Antibody, HMAD-2 Antibody, HSMAD2 Antibody, JV18-1 Antibody, Mad protein homolog smad2 Antibody, MADR2 Antibody, MADH2 Antibody, SMAD 2 Antibody, MAD homolog 2 Antibody, Mad-related protein 2 Antibody, JV18 Antibody, Mother against DPP homolog 2 Antibody, Mothers against DPP homolog 2 Antibody, Sma- and Mad-related protein 2 Antibody, SMAD family member 2 Antibody
Host	SMAD2 antibody was produced in Rabbit
Clonality:	Polyclonal
Immunogen Species:	SMAD2 antibody was raised against Human
Immunogen:	SMAD2 antibody was raised against amino acids 234-249 (DQQLNQSMDTGSPAEL) of human SMAD2 were used as immunogen. Percent identity by BLAST analysis: Human, Orangutan, Gibbon, Monkey, Marmoset, Mouse, Rat, Hamster, Elephant, Dog, Bat, Bovine, Rabbit, Horse, Opossum, Chicken, Platypus, Lizard, Xenopus (100%); Panda, Stickleback, Pufferfish, Zebrafish (94%).
Specificity:	Amino acids 234-249 (DQQLNQSMDTGSPAEL) of human SMAD2 protein was used as the immunogen.
Epitope:	aa234-249
Reactivity:	Human, Orangutan, Gibbon, Monkey, Mouse, Rat, Bat, Bovine, Dog, Hamster, Horse, Rabbit, Chicken, Xenopus
Predicted Reactivity:	Zebrafish
Purification:	Protein G purified
Presentation:	PBS, 0.05% BSA, 0.05% sodium azide
Recommended Storage:	Short term 4°C, long term aliquot and store at -20°C, avoid freeze thaw cycles.
Usage Summary:	Immunohistochemistry: LS-B2063 was validated for use in immunohistochemistry on a panel of 21 formalin-fixed, paraffin-embedded (FFPE) human tissues after heat induced antigen retrieval in pH 6.0 citrate buffer. After incubation with the primary antibody, slides were incubated with biotinylated secondary antibody, followed by alkaline phosphatase-streptavidin and chromogen. The stained slides were evaluated by a pathologist to confirm staining specificity. The optimal working concentration for LS-B2063 was determined to be 5 ug/ml.
Uses:	IHC - Paraffin (5 µg/ml), Western blot (2 - 4 µg/ml) (Optimal dilution to be determined by the researcher)
Size:	50 µg
Concentration:	0.5 mg/ml

Immunohistochemistry Image:



Anti-SMAD2 antibody IHC of human placenta. Immunohistochemistry of formalin-fixed, paraffin-embedded tissue after heat-induced antigen retrieval. Antibody LS-B2063 concentration 5 ug/ml.

Requested From:

Japan

Laboratory Reagent For In Vitro Research Use Only

Not for resale without prior written consent from LifeSpan BioSciences, Inc.

Created on 9/23/2014

© 2014 LifeSpan BioSciences