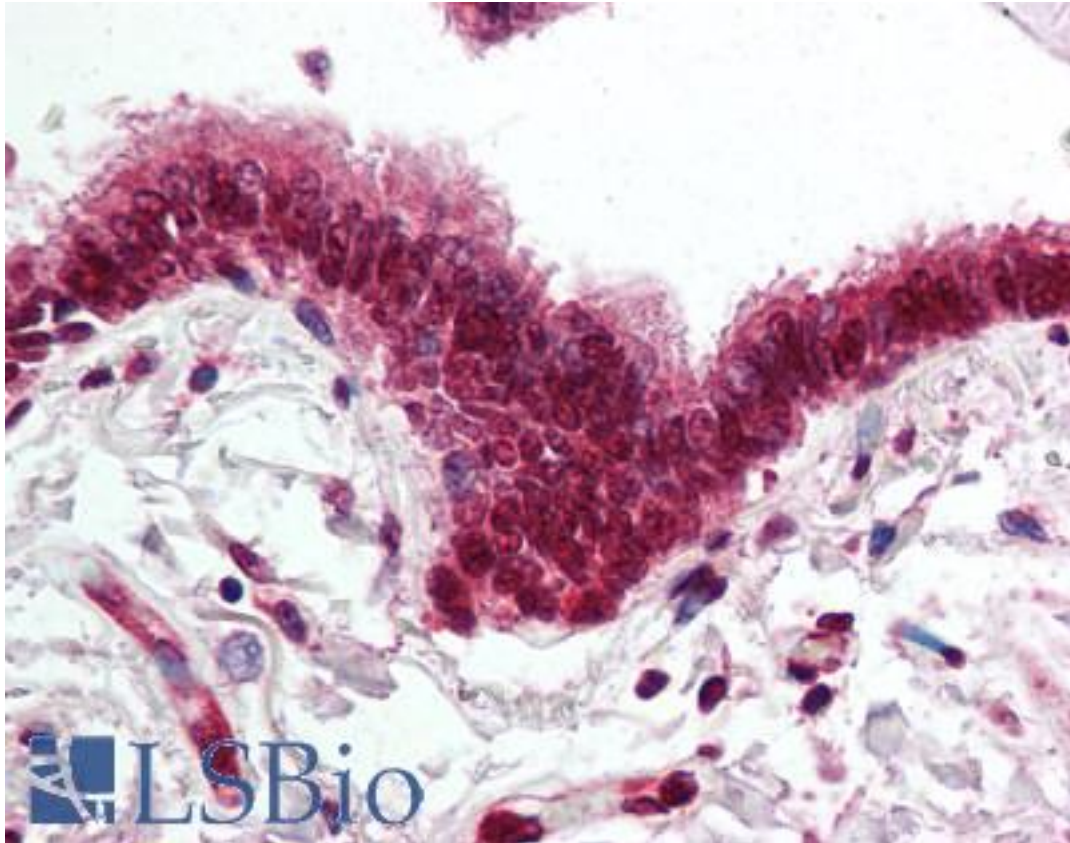


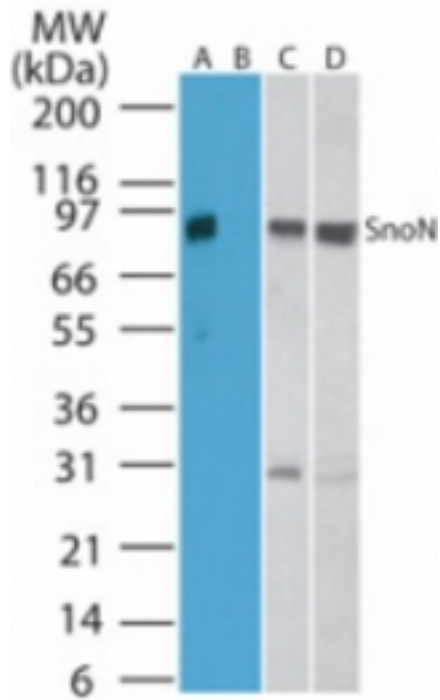
SKIL / SNO / SnoN Rabbit anti-Human Polyclonal (aa600-684) Antibody - LS-B2062 - LSBio	
CatalogID:	LS-B2062
Validation:	This antibody replaces catalog number LS-C799. It has been validated for use in the following assays: IHC-P.
Target:	SKI-like oncogene (SKIL)
Synonyms:	SKIL Antibody, Ski-related oncogene Antibody, Sno1 Antibody, SnoN Antibody, SKI-like oncogene Antibody, Sno Antibody, Ski-related oncogene snoN Antibody, Ski-related protein Antibody, Ski-like protein Antibody, SnoA Antibody
Host	SKIL antibody was produced in Rabbit
Clonality:	Polyclonal
Isotype:	IgG
Immunogen Species:	SKIL / SNO / SnoN antibody was raised against Human
Antigen Type:	Synthetic peptide
Immunogen:	SKIL / SNO / SnoN antibody was raised against synthetic peptide from human SKIL.
Specificity:	A portion of amino acids 600-684 of human snoN protein was used as the immunogen.
Epitope:	aa600-684
Reactivity:	Human, Mouse, Rat
Purification:	Protein G purified
Presentation:	PBS, 0.2% gelatin, 0.05% sodium azide.
Recommended Storage:	Short term 4°C, long term aliquot and store at -20°C, avoid freeze thaw cycles.
Usage Summary:	Immunohistochemistry: LS-B2062 was validated for use in immunohistochemistry on a panel of 21 formalin-fixed, paraffin-embedded (FFPE) human tissues after heat induced antigen retrieval in pH 6.0 citrate buffer. After incubation with the primary antibody, slides were incubated with biotinylated secondary antibody, followed by alkaline phosphatase-streptavidin and chromogen. The stained slides were evaluated by a pathologist to confirm staining specificity. The optimal working concentration for LS-B2062 was determined to be 5 ug/ml.
Uses:	IHC - Paraffin (5 µg/ml), Western blot (1 - 3 µg/ml) (Optimal dilution to be determined by the researcher)
Size:	50 µg
Concentration:	0.5 mg/ml

Immunohistochemistry Image:



Anti-SKIL antibody IHC of human lung, respiratory epithelium. Immunohistochemistry of formalin-fixed, paraffin-embedded tissue after heat-induced antigen retrieval. Antibody LS-B2062 concentration 5 ug/ml.

Western Blot Image:



Western blot of SnoN in human kidney cell lysate in the A) absence and B) presence of immunizing peptide, C) mouse kidney, and D) rat kidney cell lysate, using antibody at 1 ug/ml.

Requested From:

Japan

Laboratory Reagent For In Vitro Research Use Only

Not for resale without prior written consent from LifeSpan BioSciences, Inc.

Created on 9/23/2014

© 2014 LifeSpan BioSciences