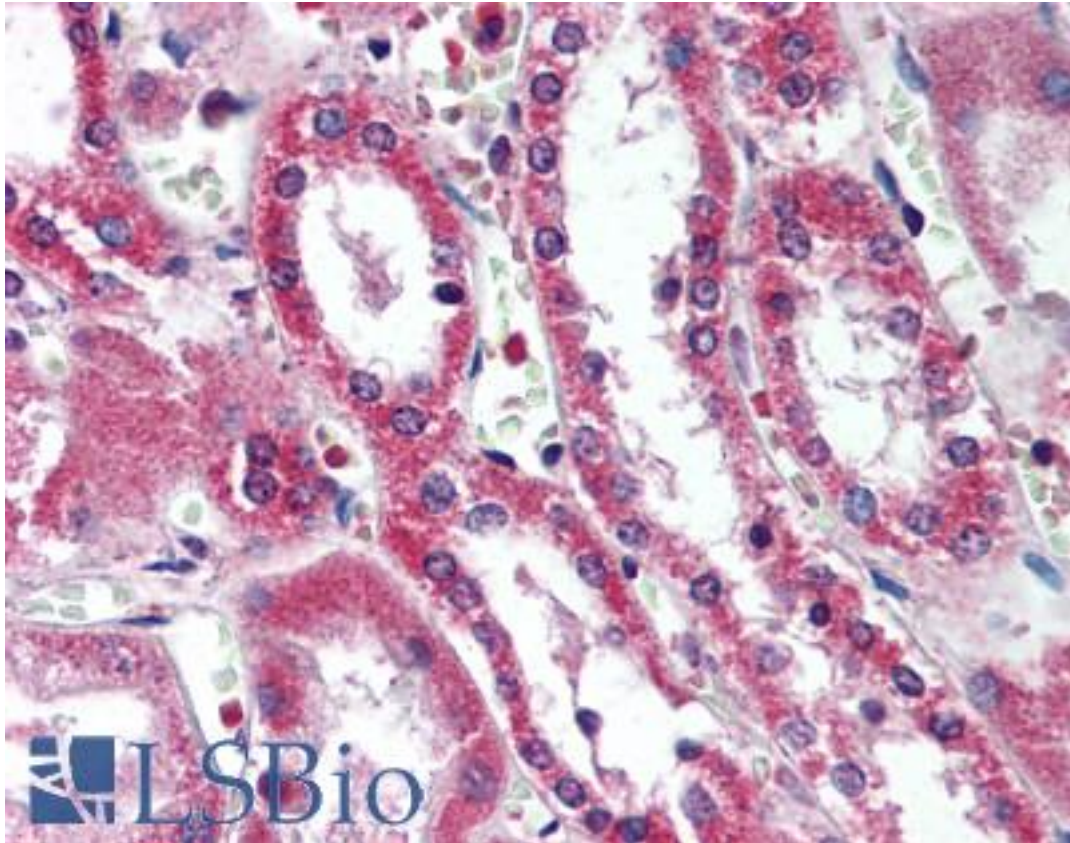


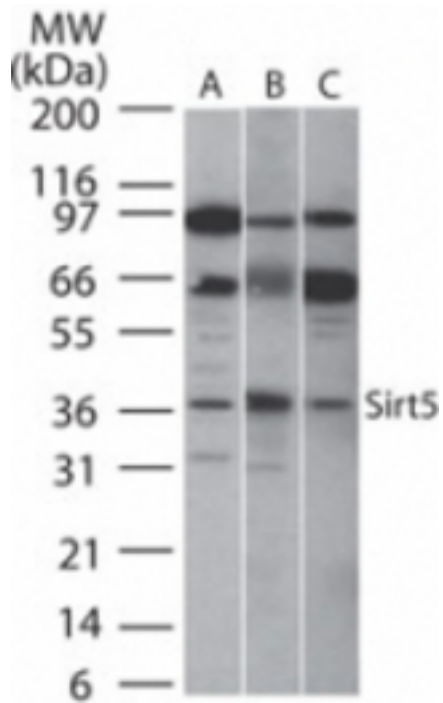
SIRT5 / Sirtuin 5 Rabbit anti-Human Polyclonal (aa30-46) Antibody - LS-B2060 - LSBio	
CatalogID:	LS-B2060
Validation:	This antibody replaces catalog number LS-C712. It has been validated for use in the following assays: IHC-P.
Target:	sirtuin 5 (SIRT5)
Synonyms:	SIRT5 Antibody, SIR2L5 Antibody, Sir2-like 5 Antibody, SIR2-like protein 5 Antibody, Sirtuin 5 Antibody, Sirtuin type 5 Antibody
Family / Subfamily:	ADP-Ribosyltransferase / not assigned-ADP-Ribosyltransferase
Host	SIRT5 antibody was produced in Rabbit
Clonality:	Polyclonal
Isotype:	IgG
Immunogen Species:	SIRT5 / Sirtuin 5 antibody was raised against Human
Antigen Type:	Synthetic peptide
Immunogen:	SIRT5 / Sirtuin 5 antibody was raised against synthetic peptide from human SIRT5.
Specificity:	A synthetic peptide corresponding to amino acids 30-46 of human SIRT5 was used as immunogen.
Epitope:	aa30-46
Reactivity:	Human, Mouse, Rat
Purification:	Protein G purified
Presentation:	PBS, 0.05% BSA, 0.05% sodium azide.
Recommended Storage:	Short term 4°C, long term aliquot and store at -20°C, avoid freeze thaw cycles.
Usage Summary:	Immunohistochemistry: LS-B2060 was validated for use in immunohistochemistry on a panel of 21 formalin-fixed, paraffin-embedded (FFPE) human tissues after heat induced antigen retrieval in pH 6.0 citrate buffer. After incubation with the primary antibody, slides were incubated with biotinylated secondary antibody, followed by alkaline phosphatase-streptavidin and chromogen. The stained slides were evaluated by a pathologist to confirm staining specificity. The optimal working concentration for LS-B2060 was determined to be 5 ug/ml.
Uses:	IHC - Paraffin (5 µg/ml), Western blot (1 - 3 µg/ml) (Optimal dilution to be determined by the researcher)
Size:	50 µg
Concentration:	0.5 mg/ml

Immunohistochemistry Image:



Anti-SIRT5 antibody IHC of human kidney. Immunohistochemistry of formalin-fixed, paraffin-embedded tissue after heat-induced antigen retrieval. Antibody LS-B2060 concentration 5 ug/ml.

Western Blot Image:



Western blot of SIRT5 in A) human, B) mouse and C) rat intestine cell lysate using antibody at 2 ug/ml.

Requested From:

Japan

Laboratory Reagent For In Vitro Research Use Only

Not for resale without prior written consent from LifeSpan BioSciences, Inc.

Created on 9/23/2014

© 2014 LifeSpan BioSciences