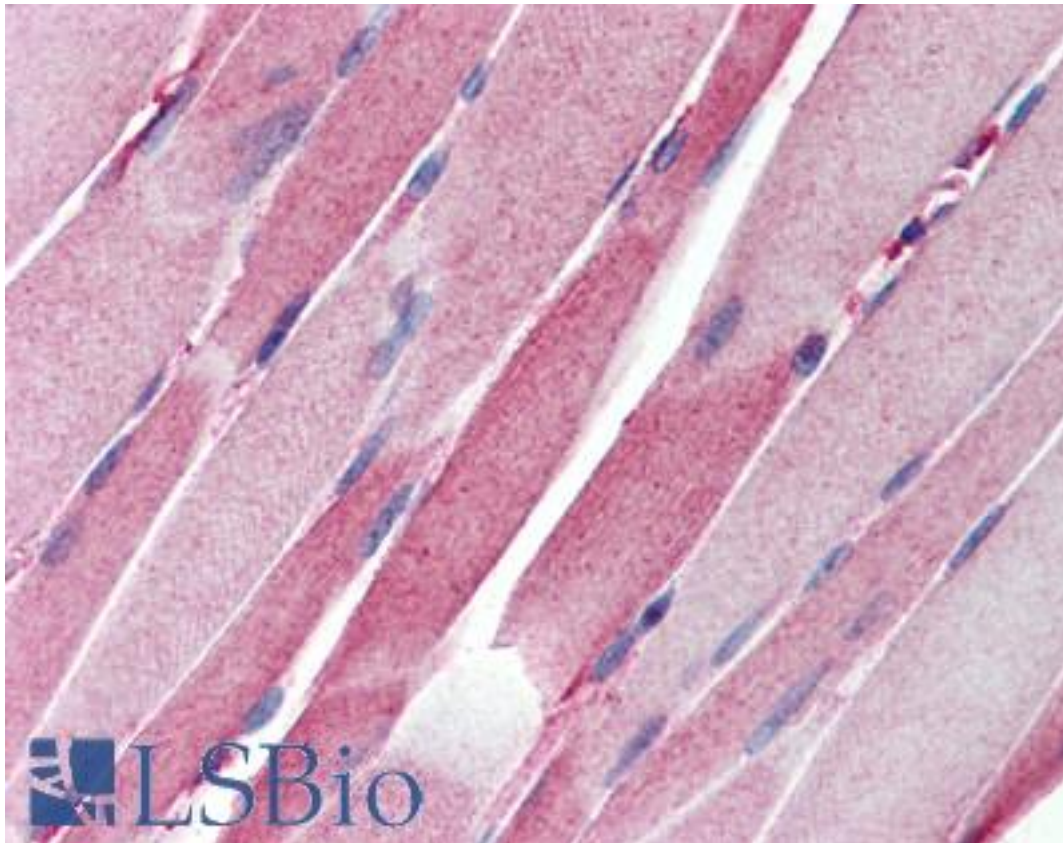


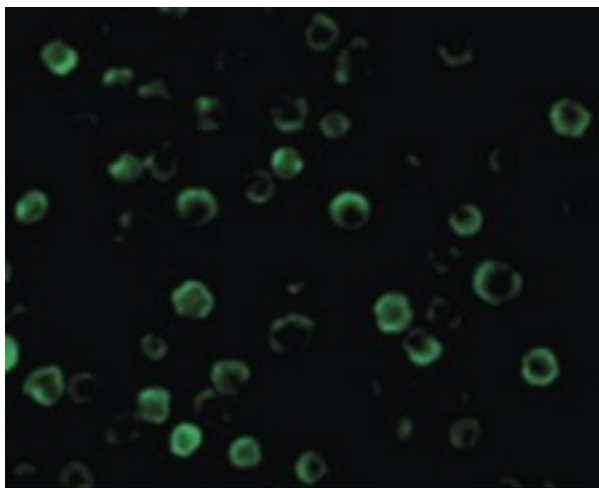
CASP8AP2 / FLASH Rabbit anti-Human Polyclonal (C-Terminus) Antibody - LS-B206 - LSBio	
CatalogID:	LS-B206
Validation:	This antibody replaces catalog number LS-C378. It has been validated for use in the following assays: IHC.
Target:	caspase 8 associated protein 2 (CASP8AP2)
Synonyms:	CASP8AP2 Antibody, CASP8 associated protein 2 Antibody, CASP8-associated protein 2 Antibody, CED-4 Antibody, FLICE associated huge Antibody, FLICE-associated huge protein Antibody, KIAA1315 Antibody, FLASH Antibody, FLASH homolog RIP25 Antibody, Human FLASH Antibody, RIP25 Antibody, Caspase 8 associated protein 2 Antibody
Family / Subfamily:	Apoptosis
Host	CASP8AP2 antibody was produced in Rabbit
Clonality:	Polyclonal
Immunogen Species:	CASP8AP2 / FLASH antibody was raised against Human
Antigen Type:	Synthetic peptide
Immunogen:	CASP8AP2 / FLASH antibody was raised against synthetic peptide from human CASP8AP2 / FLASH.
Specificity:	synthetic peptide corresponding to amino acids near the carboxy-terminus of human FLASH which differ from those of mouse by one amino acid
Epitope:	C-Terminus
Reactivity:	Human
Purification:	Immunoaffinity purified
Presentation:	PBS, 0.02% sodium azide.
Recommended Storage:	Short term 4°C, long term aliquot and store at -20°C, avoid freeze thaw cycles. Store undiluted.
Usage Summary:	Immunohistochemistry: LS-B206 was validated for use in immunohistochemistry on a panel of 21 formalin-fixed, paraffin-embedded (FFPE) human tissues after heat induced antigen retrieval in pH 6.0 citrate buffer. After incubation with the primary antibody, slides were incubated with biotinylated secondary antibody, followed by alkaline phosphatase-streptavidin and chromogen. The stained slides were evaluated by a pathologist to confirm staining specificity. The optimal working concentration for LS-B206 was determined to be 10 ug/ml.
Uses:	IHC - Paraffin (10 µg/ml), ICC, Western blot (0.25 - 0.5 µg/ml) (Optimal dilution to be determined by the researcher)
Size:	50 µg
Concentration:	0.5 mg/ml

Immunohistochemistry Image:



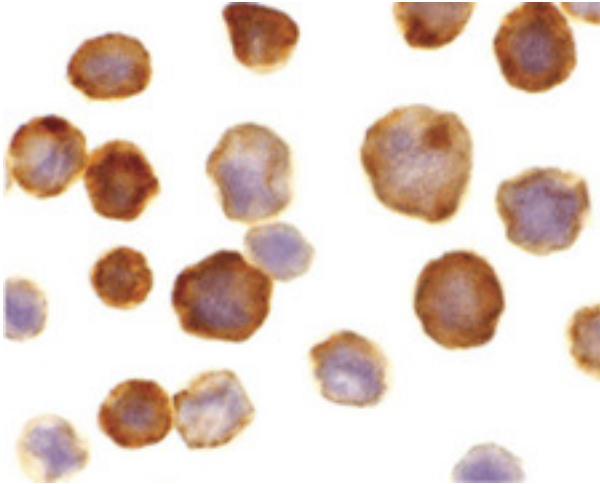
Anti-CASP8AP2 / FLASH antibody IHC of human skeletal muscle. Immunohistochemistry of formalin-fixed, paraffin-embedded tissue after heat-induced antigen retrieval. Antibody LS-B206 concentration 10 ug/ml.

Immunofluorescence Image:



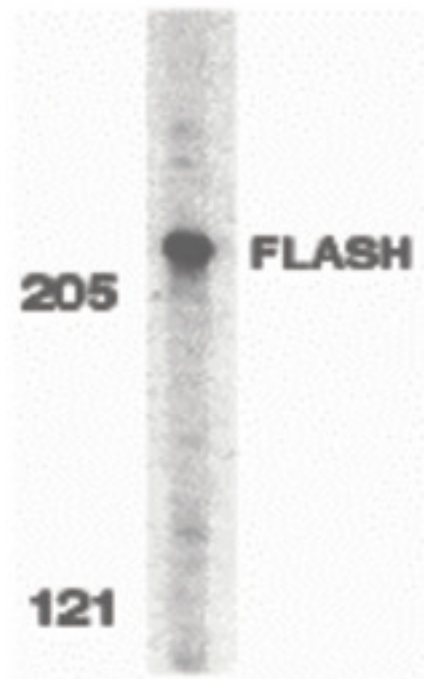
Immunofluorescence of FLASH in HeLa cells with FLASH antibody at 10 ug/ml.

Immunocytochemistry Image:



Immunocytochemistry of FLASH in HeLa cells with FLASH antibody at 10 ug/ml.

Western Blot Image:



Western blot of FLASH in HeLa whole cell lysate with FLASH antibody at 0.5 ug/ml.

Requested From:

Japan

Laboratory Reagent For In Vitro Research Use Only

Not for resale without prior written consent from LifeSpan BioSciences, Inc.

Created on 9/23/2014

© 2014 LifeSpan BioSciences