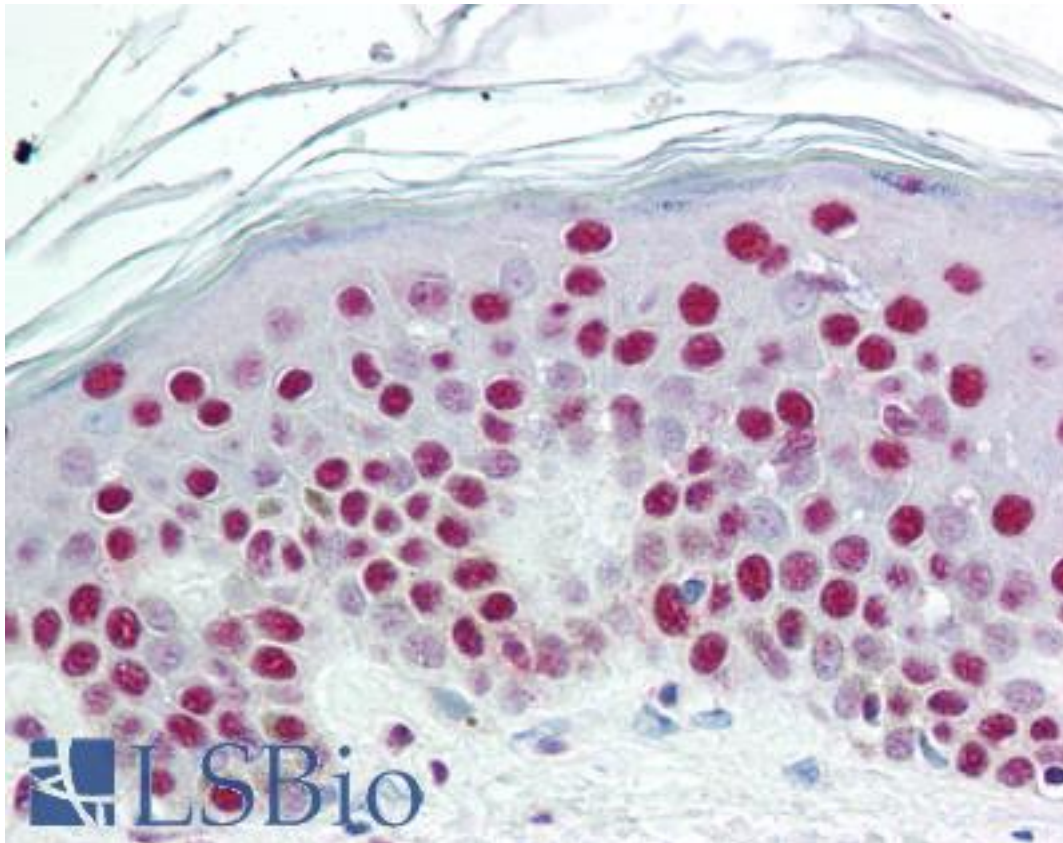


SET / TAF-I Rabbit anti-Human Polyclonal (aa66-81) Antibody - LS-B2058 - LSBio

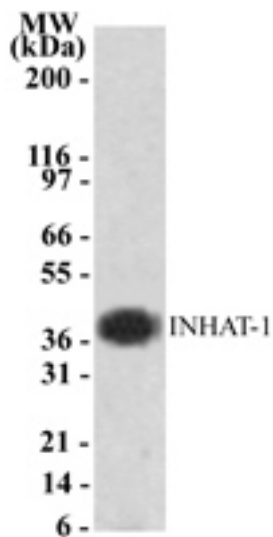
CatalogID:	LS-B2058
Validation:	This antibody replaces catalog number LS-C727. It has been validated for use in the following assays: IHC-P.
Target:	SET nuclear oncogene
Synonyms:	SET Antibody, 2PP2A Antibody, HLA-DR-associated protein II Antibody, I-2PP2A Antibody, TAF-IBETA Antibody, SET nuclear oncogene Antibody, TAF-I Antibody, Template-activating factor I Antibody, I2PP2A Antibody, IGAAD Antibody, IPP2A2 Antibody, PHAPII Antibody, Protein SET Antibody
Host	SET antibody was produced in Rabbit
Clonality:	Polyclonal
Isotype:	IgG
Immunogen Species:	SET / TAF-I antibody was raised against Human
Antigen Type:	Synthetic peptide
Immunogen:	SET / TAF-I antibody was raised against synthetic peptides of amino acids 66-81 (PFFQKRSELIAKIPNF) and 135-151 (ENKVLKSEFHLNESGDP) of human INHAT-1. Sequence homology is 100% in mouse and rat. Percent identity by BLAST analysis: Human, Monkey, Marmoset, Mouse, Rat, Hamster, Elephant, Panda, Bovine, Horse, Pig, Opossum, Turkey, Chicken, Platypus, Xenopus, Salmon, Pufferfish, Zebrafish (100%); Gorilla, Stickleback (94%); Dog (88%).
Specificity:	Synthetic peptides of amino acids 66-81 and 135-151 of human SET (Q01105). Sequence homology is 100% in mouse and rat.
Epitope:	aa66-81
Reactivity:	Human, Monkey, Mouse, Rat, Bovine, Hamster, Horse, Pig, Chicken, Xenopus, Zebrafish
Predicted Reactivity:	Gorilla
Purification:	Protein G purified
Presentation:	PBS, 0.02% sodium azide, 0.1 mg/ml BSA. sodium azide is toxic.
Recommended Storage:	Short term 4°C, long term aliquot and store at -20°C, avoid freeze thaw cycles.
Usage Summary:	Immunohistochemistry: LS-B2058 was validated for use in immunohistochemistry on a panel of 21 formalin-fixed, paraffin-embedded (FFPE) human tissues after heat induced antigen retrieval in pH 6.0 citrate buffer. After incubation with the primary antibody, slides were incubated with biotinylated secondary antibody, followed by alkaline phosphatase-streptavidin and chromogen. The stained slides were evaluated by a pathologist to confirm staining specificity. The optimal working concentration for LS-B2058 was determined to be 10 ug/ml.
Uses:	IHC - Paraffin (10 µg/ml), Western blot (1 - 2 µg/ml) (Optimal dilution to be determined by the researcher)
Size:	50 µg
Concentration:	0.5 mg/ml

Immunohistochemistry Image:



Anti-SET antibody IHC of human skin. Immunohistochemistry of formalin-fixed, paraffin-embedded tissue after heat-induced antigen retrieval. Antibody LS-B2058 concentration 10 ug/ml.

Western Blot Image:



Western blot of INHAT-1 using antibody against Jurkat cell lysate.

Requested From:

Japan

Laboratory Reagent For In Vitro Research Use Only

Not for resale without prior written consent from LifeSpan BioSciences, Inc.

Created on 9/23/2014

© 2014 LifeSpan BioSciences