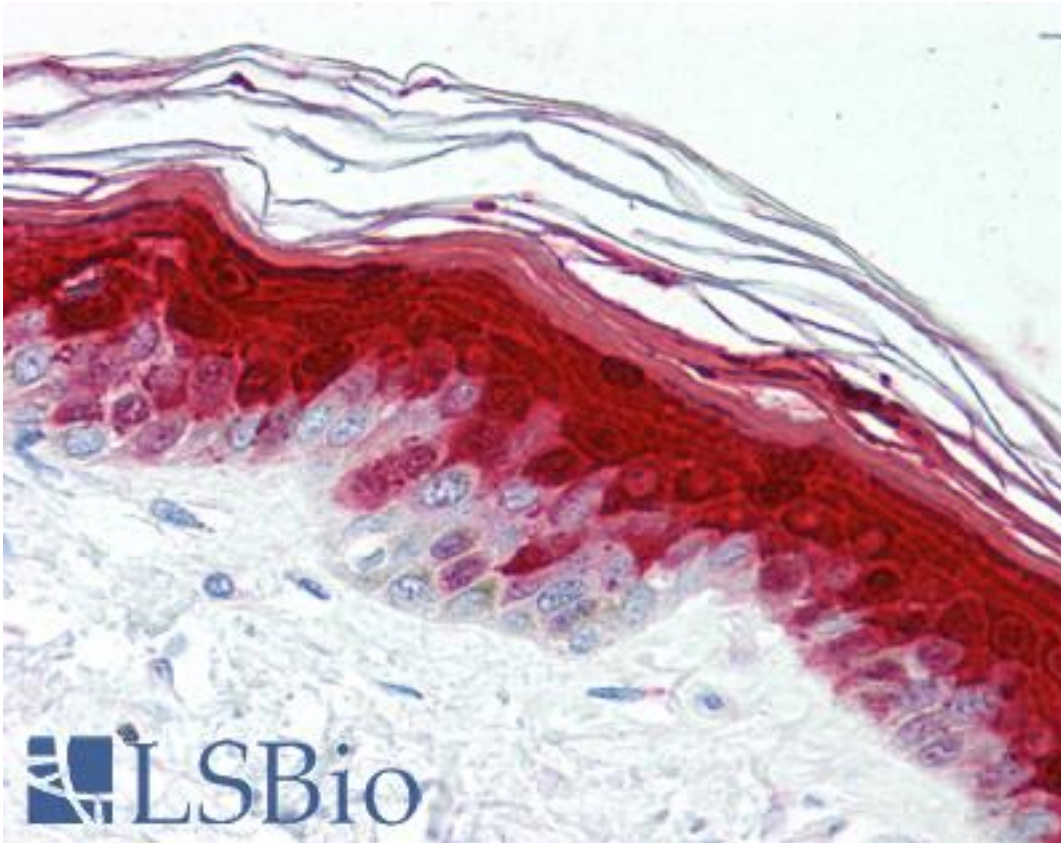


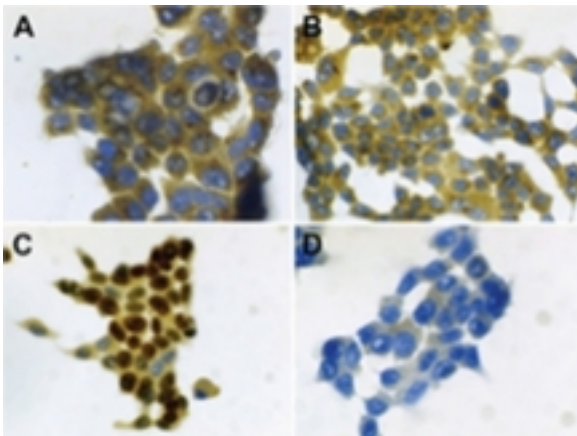
| S100A7 / Psoriasin Mouse anti-Human Monoclonal (47C1068) Antibody - LS-B2057 - LSBio |  |
|--|--|
| <b>CatalogID:</b>  | LS-B2057   |
| <b>Validation:</b>   | This antibody replaces catalog number LS-C588. It has been validated for use in the following assays: IHC-P.   |
| <b>Target:</b>   | S100 calcium binding protein A7 (S100A7)   |
| <b>Synonyms:</b>   | S100A7 Antibody, PSOR1 Antibody, Psoriasin Antibody, Protein S100-A7 Antibody, Psoriasin 1 Antibody, S100A7c Antibody  |
| <b>Host</b>  | S100A7 antibody was produced in Mouse  |
| <b>Clonality:</b>  | Monoclonal   |
| <b>Isotype:</b>  | IgG1,k   |
| <b>Clone Name:</b>   | 47C1068  |
| <b>Immunogen Species:</b>  | S100A7 / Psoriasin antibody was raised against Human   |
| <b>Immunogen:</b>  | S100A7 / Psoriasin antibody was raised against recombinant human S100A7.   |
| <b>Specificity:</b>  | Recombinant psoriasin/HID-5 protein.   |
| <b>Reactivity:</b>   | Human  |
| <b>Purification:</b>   | Protein G purified   |
| <b>Presentation:</b>   | PBS, 0.05% sodium azide, 0.5% BSA.   |
| <b>Recommended Storage:</b>  | Short term 4°C, long term aliquot and store at -20°C, avoid freeze thaw cycles.  |
| <b>Usage Summary:</b>  | Immunohistochemistry: LS-B2057 was validated for use in immunohistochemistry on a panel of 21 formalin-fixed, paraffin-embedded (FFPE) human tissues after heat induced antigen retrieval in pH 6.0 citrate buffer. After incubation with the primary antibody, slides were incubated with biotinylated secondary antibody, followed by alkaline phosphatase-streptavidin and chromogen. The stained slides were evaluated by a pathologist to confirm staining specificity. The optimal working concentration for LS-B2057 was determined to be 10 ug/ml. |
| <b>Uses:</b>   | IHC - Paraffin (10 µg/ml), ICC, Western blot (Optimal dilution to be determined by the researcher)   |
| <b>Size:</b>   | 50 µg  |
| <b>Concentration:</b>  | 0.5 mg/ml  |

**Immunohistochemistry Image:**



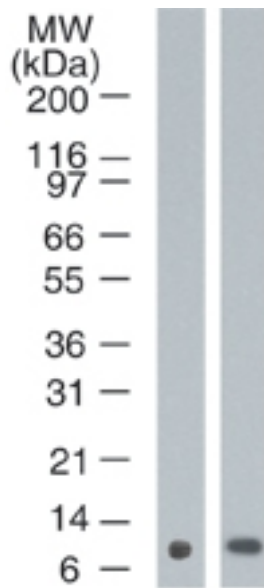
Anti-S100A7 antibody IHC of human skin. Immunohistochemistry of formalin-fixed, paraffin-embedded tissue after heat-induced antigen retrieval. Antibody LS-B2057 concentration 10 ug/ml.

**Immunocytochemistry Image:**



IHC of Psoriasisin/HID-5 expression in formalin-fixed, paraffin-embedded ductal carcinoma in situ. Shown are successive sections of H&E staining, a control monoclonal antibody, and antibody.

**Western Blot Image:**



Western blot of Psoriasis/HID-5 in A) MCF10A?and B) MCF7 cell lysate using antibody at 1 ug/ml.

**Requested From:**

Japan

Laboratory Reagent For In Vitro Research Use Only

Not for resale without prior written consent from LifeSpan BioSciences, Inc.

Created on 9/23/2014

© 2014 LifeSpan BioSciences