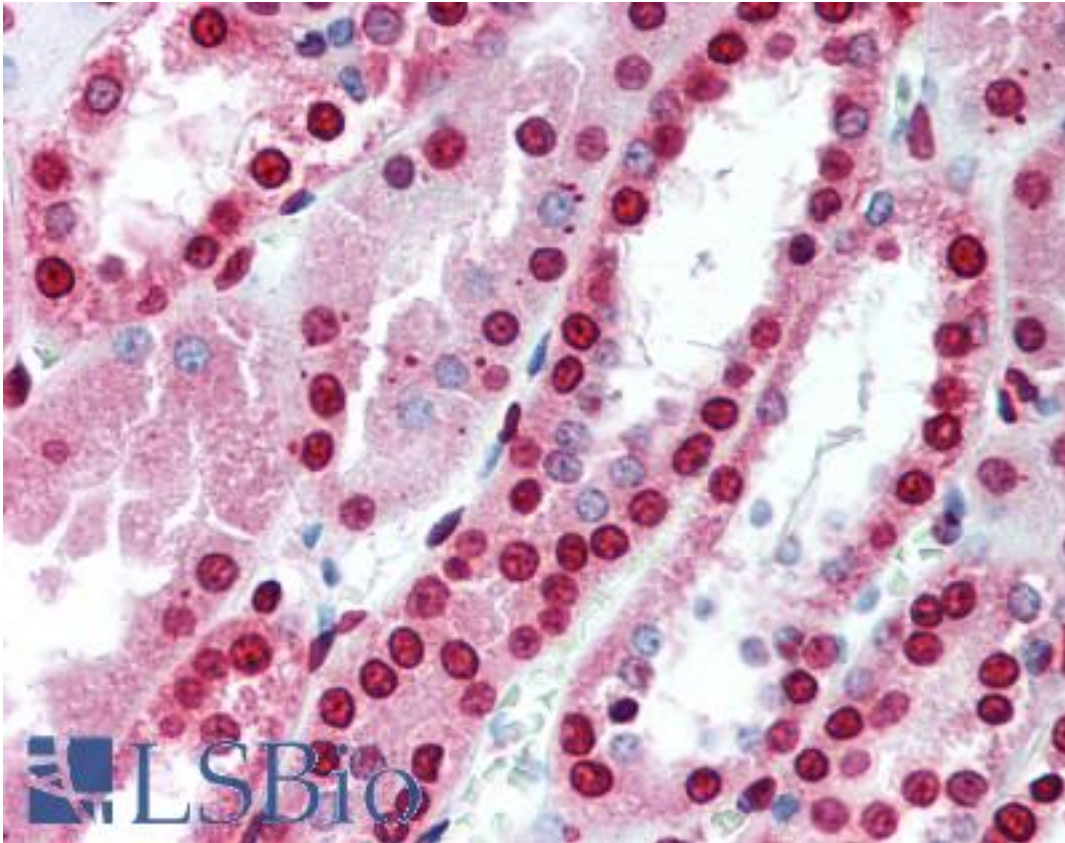


MBD3 Mouse anti-Human Monoclonal (aa215-230) (106B691) Antibody - LS-B2053 - LSBio	
CatalogID:	LS-B2053
Validation:	This antibody replaces catalog number LS-C565. It has been validated for use in the following assays: IHC-P.
Target:	methyl-CpG binding domain protein 3 (MBD3)
Synonyms:	MBD3 Antibody
Host	MBD3 antibody was produced in Mouse
Clonality:	Monoclonal
Isotype:	IgG1
Clone Name:	106B691
Immunogen Species:	MBD3 antibody was raised against Human
Immunogen:	MBD3 antibody was raised against amino acids 215-230 (CKAFMVTDEDIRKQEE) of human MBD3 protein were used as the immunogen for this antibody. Percent identity by BLAST analysis: Human, Gorilla, Orangutan, Gibbon, Monkey, Elephant, Panda, Dog, Bovine, Bat, Horse, Pig, Opossum, Turkey, Chicken, Platypus, Xenopus (100%); Marmoset, Mouse, Rat, Hamster, Rabbit, Stickleback, Pufferfish, Zebrafish (94%); Salmon (88%).
Specificity:	Amino acids215-230 (CKAFMVTDEDIRKQEE) of humanMBD3 protein were used as the immunogen.
Epitope:	aa215-230
Reactivity:	Human, Gorilla, Orangutan, Gibbon, Bat, Bovine, Dog, Horse, Pig, Chicken, Xenopus
Predicted Reactivity:	Monkey, Mouse, Rat, Hamster, Rabbit, Zebrafish
Purification:	Protein G purified
Presentation:	PBS, 0.02% sodium azide. Sourced in TCS.
Recommended Storage:	Short term 4°C, long term aliquot and store at -20°C, avoid freeze thaw cycles.
Usage Summary:	Immunohistochemistry: LS-B2053 was validated for use in immunohistochemistry on a panel of 21 formalin-fixed, paraffin-embedded (FFPE) human tissues after heat induced antigen retrieval in pH 6.0 citrate buffer. After incubation with the primary antibody, slides were incubated with biotinylated secondary antibody, followed by alkaline phosphatase-streptavidin and chromogen. The stained slides were evaluated by a pathologist to confirm staining specificity. The optimal working concentration for LS-B2053 was determined to be 10 ug/ml.
Uses:	IHC - Paraffin (10 µg/ml), Western blot (2 µg/ml) (Optimal dilution to be determined by the researcher)
Size:	50 µg
Concentration:	0.5 mg/ml

Immunohistochemistry Image:



Anti-MBD3 antibody IHC of human kidney. Immunohistochemistry of formalin-fixed, paraffin-embedded tissue after heat-induced antigen retrieval. Antibody LS-B2053 concentration 10 ug/ml.

Requested From:

Japan

Laboratory Reagent For In Vitro Research Use Only

Not for resale without prior written consent from LifeSpan BioSciences, Inc.

Created on 9/23/2014

© 2014 LifeSpan BioSciences