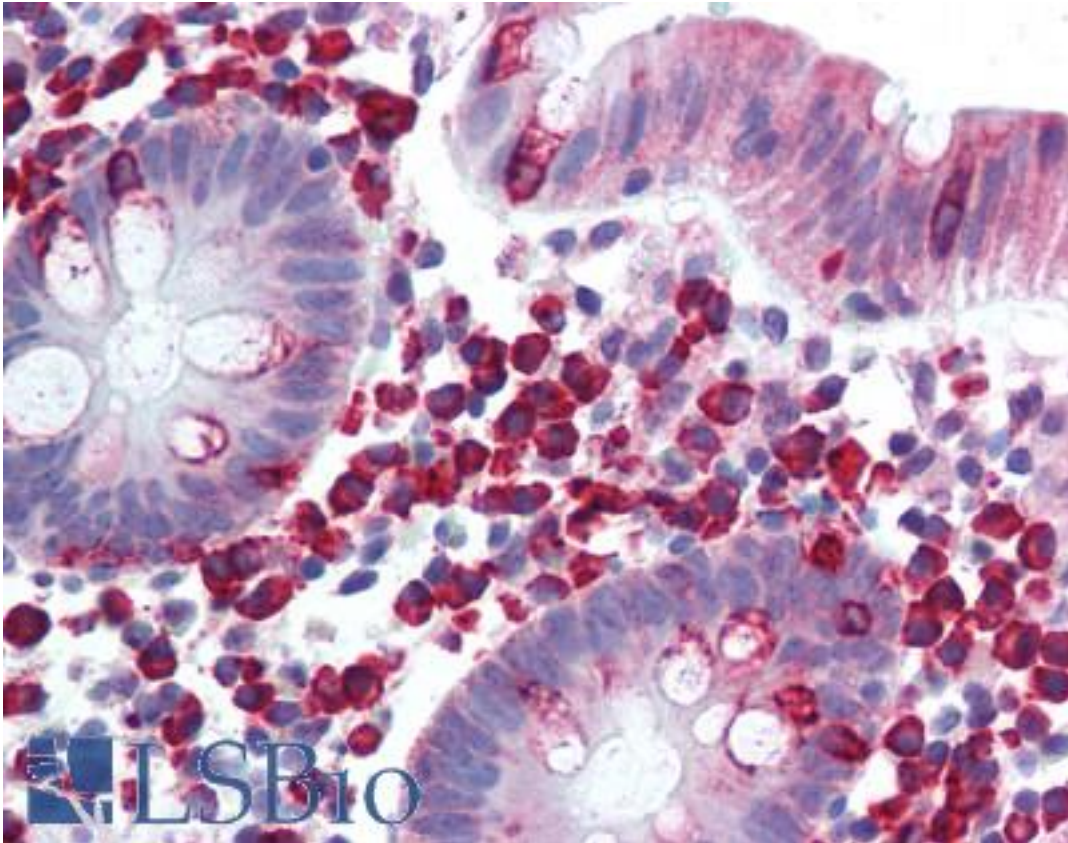


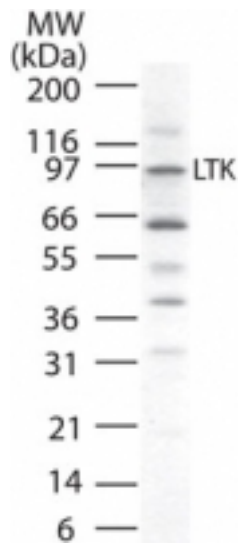
LTK Rabbit anti-Human Polyclonal (aa800-864) Antibody - LS-B2050 - LSBio	
CatalogID:	LS-B2050
Validation:	This antibody replaces catalog number LS-C736. It has been validated for use in the following assays: IHC-P.
Target:	leukocyte receptor tyrosine kinase (LTK)
Synonyms:	LTK Antibody, Leukocyte tyrosine kinase Antibody, Protein tyrosine kinase 1 Antibody, TYK1 Antibody
Host	LTK antibody was produced in Rabbit
Clonality:	Polyclonal
Isotype:	IgG
Immunogen Species:	LTK antibody was raised against Human
Antigen Type:	Synthetic peptide
Immunogen:	LTK antibody was raised against synthetic peptide from human LTK.
Specificity:	A portion of amino acids 800-864 of human LTK was used as the immunogen.
Epitope:	aa800-864
Reactivity:	Human
Purification:	Protein G purified
Presentation:	PBS, 0.2% gelatin, 0.05% sodium azide.
Recommended Storage:	Short term 4°C, long term aliquot and store at -20°C, avoid freeze thaw cycles.
Usage Summary:	Immunohistochemistry: LS-B2050 was validated for use in immunohistochemistry on a panel of 21 formalin-fixed, paraffin-embedded (FFPE) human tissues after heat induced antigen retrieval in pH 6.0 citrate buffer. After incubation with the primary antibody, slides were incubated with biotinylated secondary antibody, followed by alkaline phosphatase-streptavidin and chromogen. The stained slides were evaluated by a pathologist to confirm staining specificity. The optimal working concentration for LS-B2050 was determined to be 10 ug/ml.
Uses:	IHC - Paraffin (10 µg/ml), Western blot (0.5 - 2 µg/ml) (Optimal dilution to be determined by the researcher)
Size:	50 µg
Concentration:	0.5 mg/ml

Immunohistochemistry Image:



Anti-LTK antibody IHC of human colon. Immunohistochemistry of formalin-fixed, paraffin-embedded tissue after heat-induced antigen retrieval. Antibody LS-B2050 concentration 10 ug/ml.

Western Blot Image:



Western blot of LTK in human K562 cell lysate using antibody at 1 ug/ml.

Requested From:

Japan

Laboratory Reagent For In Vitro Research Use Only

Not for resale without prior written consent from LifeSpan BioSciences, Inc.

Created on 9/23/2014

© 2014 LifeSpan BioSciences