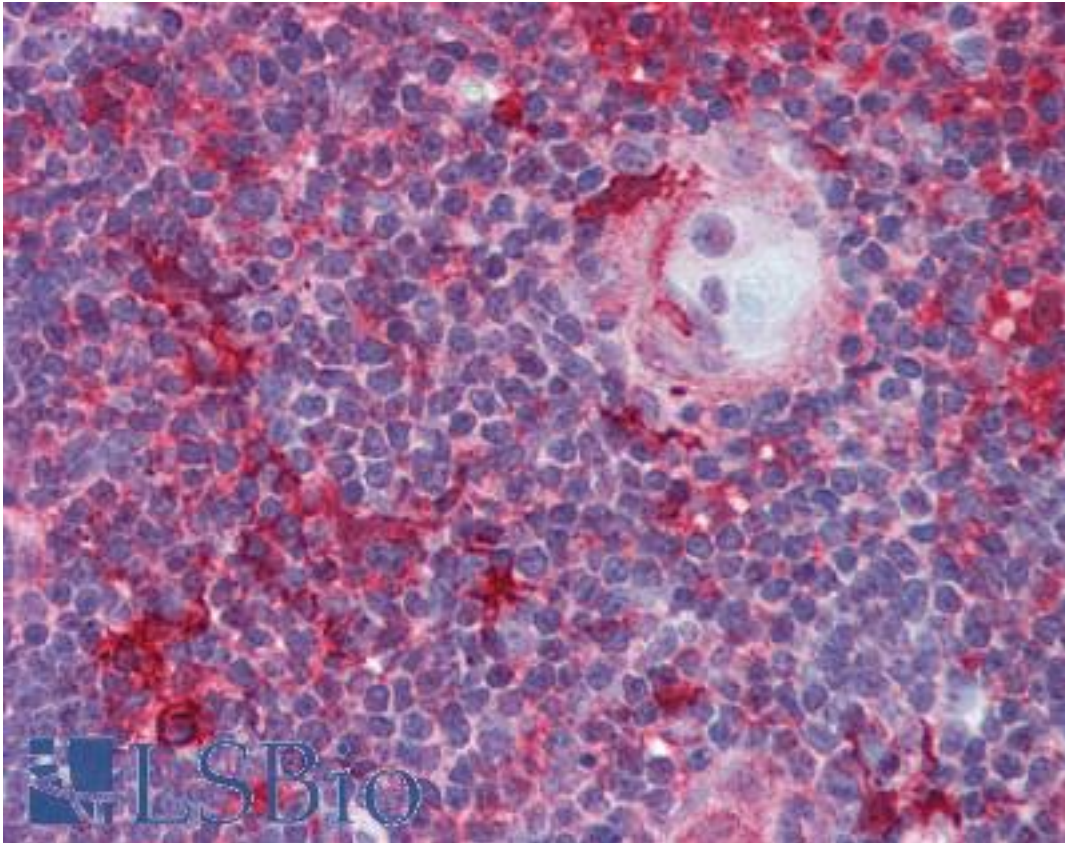


p56lck / LCK Mouse anti-Human Monoclonal (33D196) Antibody - LS-B2049 - LSBio

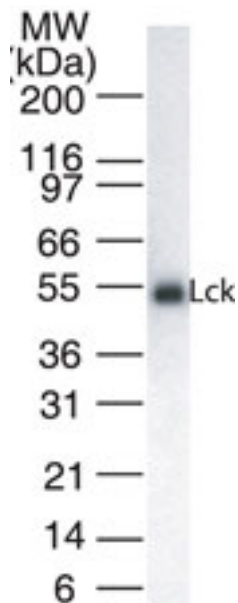
<b>CatalogID:</b>	LS-B2049
<b>Validation:</b>	This antibody replaces catalog number LS-C561. It has been validated for use in the following assays: IHC-P.
<b>Target:</b>	lymphocyte-specific protein tyrosine kinase (LCK)
<b>Synonyms:</b>	LCK Antibody, Lck kinase Antibody, LSK Antibody, p56-LCK Antibody, Pp58lck Antibody, Tyrosine-protein kinase Lck Antibody, p56lck Antibody, Protein YT16 Antibody, Proto-oncogene Lck Antibody, YT16 Antibody
<b>Family / Subfamily:</b>	Protein Kinase / Src
<b>Host</b>	LCK antibody was produced in Mouse
<b>Clonality:</b>	Monoclonal
<b>Isotype:</b>	IgG1
<b>Clone Name:</b>	33D196
<b>Immunogen Species:</b>	p56lck / LCK antibody was raised against Human
<b>Antigen Type:</b>	Synthetic peptide
<b>Immunogen:</b>	p56lck / LCK antibody was raised against a synthetic peptide containing amino acid residues of human lck protein. It is 100% homologous in mouse.
<b>Specificity:</b>	A synthetic peptide containing amino acid residues of human lck protein. It is 100% homologous in mouse.
<b>Reactivity:</b>	Human
<b>Purification:</b>	Protein G purified
<b>Presentation:</b>	PBS, 0.02% sodium azide.
<b>Recommended Storage:</b>	Short term 4°C, long term aliquot and store at -20°C, avoid freeze thaw cycles.
<b>Usage Summary:</b>	Immunohistochemistry: LS-B2049 was validated for use in immunohistochemistry on a panel of 21 formalin-fixed, paraffin-embedded (FFPE) human tissues after heat induced antigen retrieval in pH 6.0 citrate buffer. After incubation with the primary antibody, slides were incubated with biotinylated secondary antibody, followed by alkaline phosphatase-streptavidin and chromogen. The stained slides were evaluated by a pathologist to confirm staining specificity. The optimal working concentration for LS-B2049 was determined to be 5 ug/ml.
<b>Uses:</b>	IHC - Paraffin (5 µg/ml), Western blot (1:500 - 1:1000) (Optimal dilution to be determined by the researcher)
<b>Size:</b>	50 µl

**Immunohistochemistry Image:**



Anti-LCK antibody IHC of human thymus. Immunohistochemistry of formalin-fixed, paraffin-embedded tissue after heat-induced antigen retrieval. Antibody LS-B2049 concentration 5 ug/ml.

**Western Blot Image:**



Western blot analysis for Lck using antibody at 1:1000 dilution against 20 ug/lane of Jurkat cell lysate.

<b>Requested From:</b>	Japan
Laboratory Reagent For In Vitro Research Use Only	
Not for resale without prior written consent from LifeSpan BioSciences, Inc.	
Created on 9/23/2014	
© 2014 LifeSpan BioSciences	