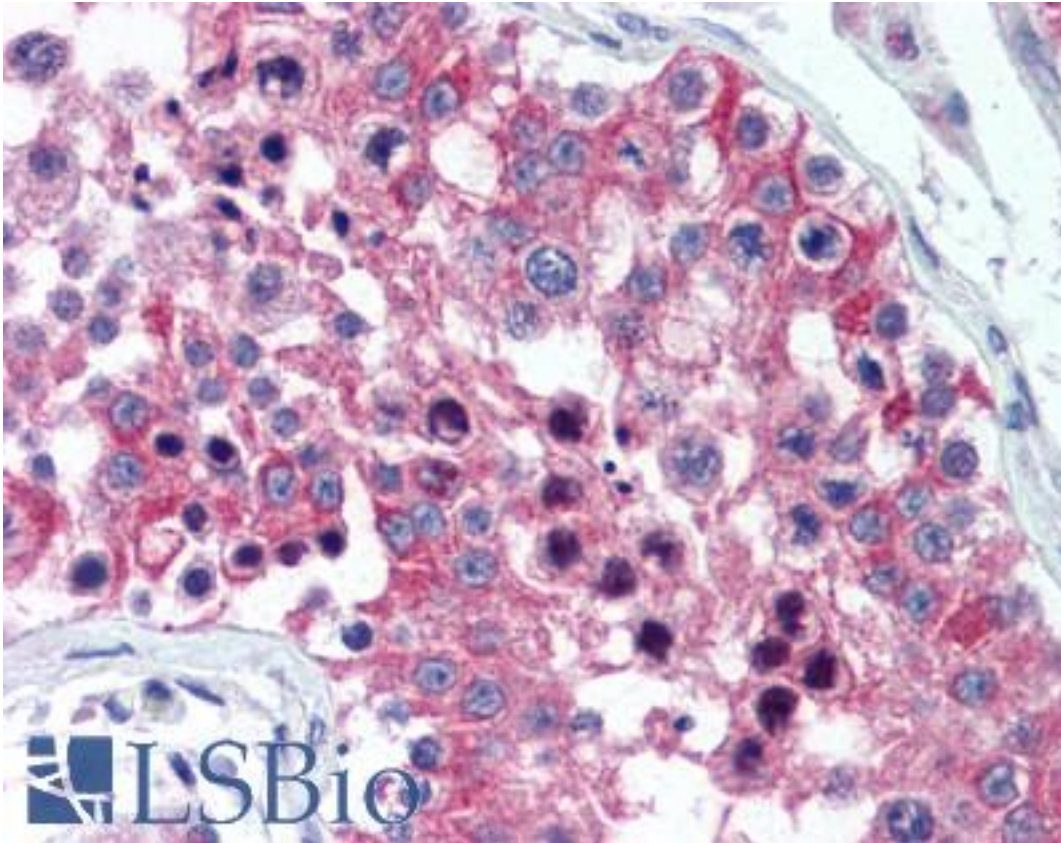


IL20RA Rabbit anti-Human Polyclonal (aa159-175) Antibody - LS-B2045 - LSBio

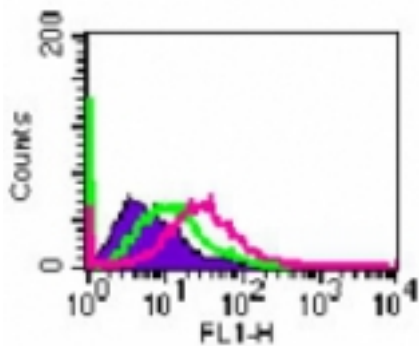
CatalogID:	LS-B2045
Validation:	This antibody replaces catalog number LS-C722. It has been validated for use in the following assays: IHC-P.
Target:	interleukin 20 receptor, alpha (IL20RA)
Synonyms:	IL20RA Antibody, CRF2-8 Antibody, IL-20 receptor subunit alpha Antibody, IL-20R1 Antibody, IL-20R-alpha Antibody, Interleukin 20 receptor, alpha Antibody, Interleukin-20 receptor I Antibody, IL-20RA Antibody, ZCYTOR7 Antibody
Family / Subfamily:	Interleukin
Host	IL20RA antibody was produced in Rabbit
Clonality:	Polyclonal
Isotype:	IgG
Immunogen Species:	IL20RA antibody was raised against Human
Antigen Type:	Synthetic peptide
Immunogen:	IL20RA antibody was raised against synthetic peptide from human IL20RA.
Specificity:	Amino acids 159-175 of human IL-20 receptor alpha protein were used as the immunogen.
Epitope:	aa159-175
Reactivity:	Human, Mouse
Purification:	Protein G purified
Presentation:	PBS, 0.2% gelatin, 0.05% sodium azide.
Recommended Storage:	Long term: -20°C; Short term: +4°C. Avoid repeat freeze-thaw cycles.
Usage Summary:	Immunohistochemistry: LS-B2045 was validated for use in immunohistochemistry on a panel of 21 formalin-fixed, paraffin-embedded (FFPE) human tissues after heat induced antigen retrieval in pH 6.0 citrate buffer. After incubation with the primary antibody, slides were incubated with biotinylated secondary antibody, followed by alkaline phosphatase-streptavidin and chromogen. The stained slides were evaluated by a pathologist to confirm staining specificity. The optimal working concentration for LS-B2045 was determined to be 10 ug/ml.
Uses:	IHC - Paraffin (10 µg/ml), Western blot (1 - 3 µg/ml), Flow Cytometry (Optimal dilution to be determined by the researcher)
Size:	50 µg
Concentration:	0.5 mg/ml

Immunohistochemistry Image:



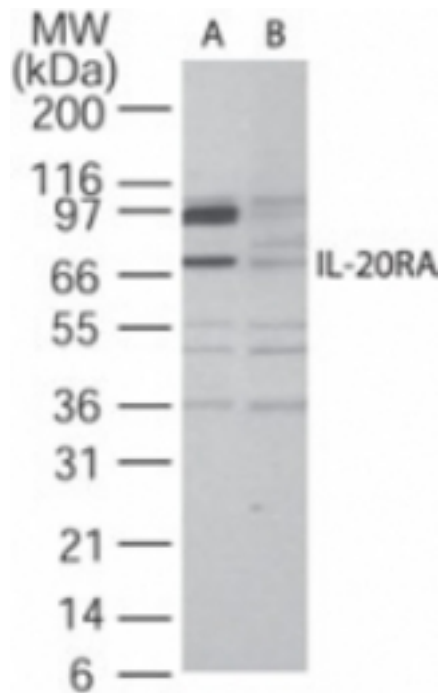
Anti-IL20RA antibody IHC of human testis. Immunohistochemistry of formalin-fixed, paraffin-embedded tissue after heat-induced antigen retrieval. Antibody LS-B2045 concentration 10 ug/ml.

Flow Cytometry Image:



Cell-surface flow cytometry analysis of IL-20RA in A375 cells using antibody at 5 ug/10⁶ cells. The shaded histogram represents cells only, green represents isotype control, and purple represents anti-IL-20RA antibody.

Western Blot Image:



Western blot of IL-20RA in A375 cell lysate in the (A) absence and (B) presence of blocking peptide using antibody at 2 ug/ml.

Requested From:

Japan

Laboratory Reagent For In Vitro Research Use Only

Not for resale without prior written consent from LifeSpan BioSciences, Inc.

Created on 9/23/2014

© 2014 LifeSpan BioSciences