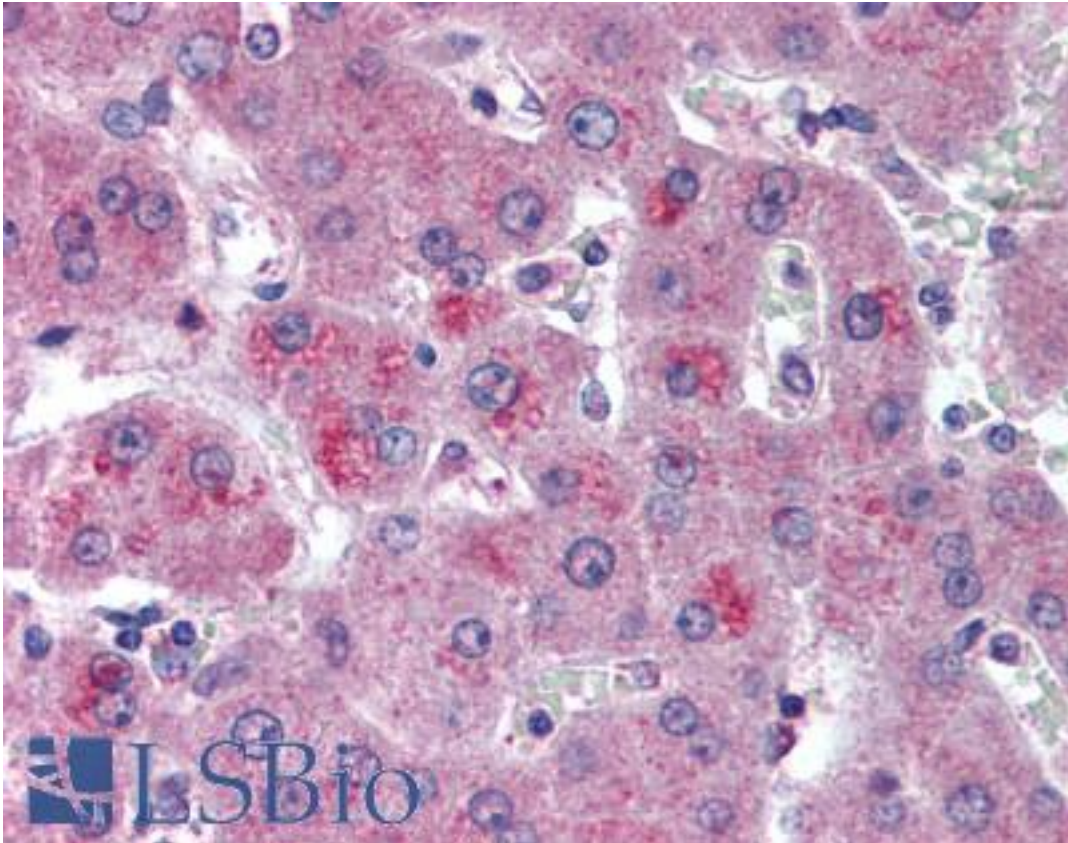


HTRA3 Rabbit anti-Human Polyclonal (aa250-300) Antibody - LS-B2043 - LSBio

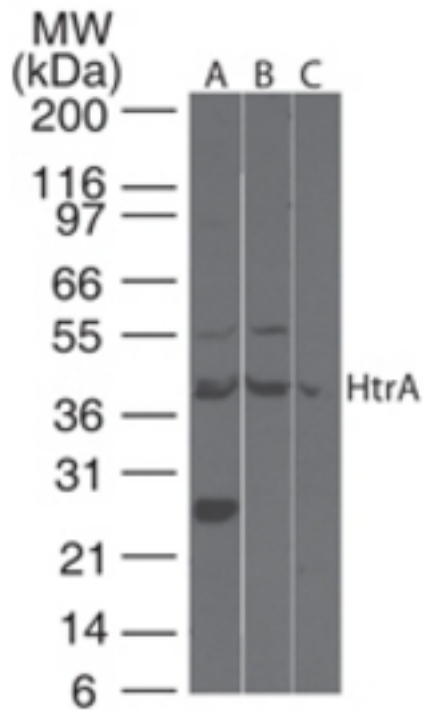
CatalogID:	LS-B2043
Validation:	This antibody replaces catalog number LS-C699. It has been validated for use in the following assays: IHC-P.
Target:	HtrA serine peptidase 3 (HTRA3)
Synonyms:	HTRA3 Antibody, HtrA serine peptidase 3 Antibody, Serine protease HTRA3 Antibody, Tasp Antibody, Probable serine protease HTRA3 Antibody, PRSP Antibody
Family / Subfamily:	Protease / Serine S1C
Host	HTRA3 antibody was produced in Rabbit
Clonality:	Polyclonal
Isotype:	IgG
Immunogen Species:	HTRA3 antibody was raised against Human
Immunogen:	HTRA3 antibody was raised against amino acids 273-287 (IVSTAQREGRELGLR) of human HtrA3 were used as immunogen. Percent identity by BLAST analysis: Human, Gibbon, Monkey, Marmoset (100%); Gorilla, Bovine, Pig, Pufferfish (93%); Mouse, Rat, Panda, Dog, Horse, Turkey, Chicken, Xenopus, Stickleback (87%); Hamster, Elephant, Opossum, Guinea pig, Platypus, Lizard, Salmon, Zebrafish (80%).
Specificity:	A synthetic peptide within amino acid residues 250-300 of human HtrA3 was used as immunogen.
Epitope:	aa250-300
Reactivity:	Human, Gibbon, Monkey, Rat
Predicted Reactivity:	Gorilla, Bovine, Pig
Purification:	Protein G purified
Presentation:	PBS, 0.2% gelatin, 0.05% sodium azide.
Recommended Storage:	Short term 4°C, long term aliquot and store at -20°C, avoid freeze thaw cycles.
Usage Summary:	Immunohistochemistry: LS-B2043 was validated for use in immunohistochemistry on a panel of 21 formalin-fixed, paraffin-embedded (FFPE) human tissues after heat induced antigen retrieval in pH 6.0 citrate buffer. After incubation with the primary antibody, slides were incubated with biotinylated secondary antibody, followed by alkaline phosphatase-streptavidin and chromogen. The stained slides were evaluated by a pathologist to confirm staining specificity. The optimal working concentration for LS-B2043 was determined to be 10 µg/ml.
Uses:	IHC - Paraffin (10 µg/ml), Western blot (1 - 3 µg/ml) (Optimal dilution to be determined by the researcher)
Size:	50 µg
Concentration:	0.5 mg/ml

Immunohistochemistry Image:



Anti-HTRA3 antibody IHC of human liver. Immunohistochemistry of formalin-fixed, paraffin-embedded tissue after heat-induced antigen retrieval. Antibody LS-B2043 concentration 10 ug/ml.

Western Blot Image:



Western blot of HtrA3 in rat heart lysate using antibody at 2 ug/ml.

Requested From:

Japan

Laboratory Reagent For In Vitro Research Use Only

Not for resale without prior written consent from LifeSpan BioSciences, Inc.

Created on 9/23/2014

© 2014 LifeSpan BioSciences