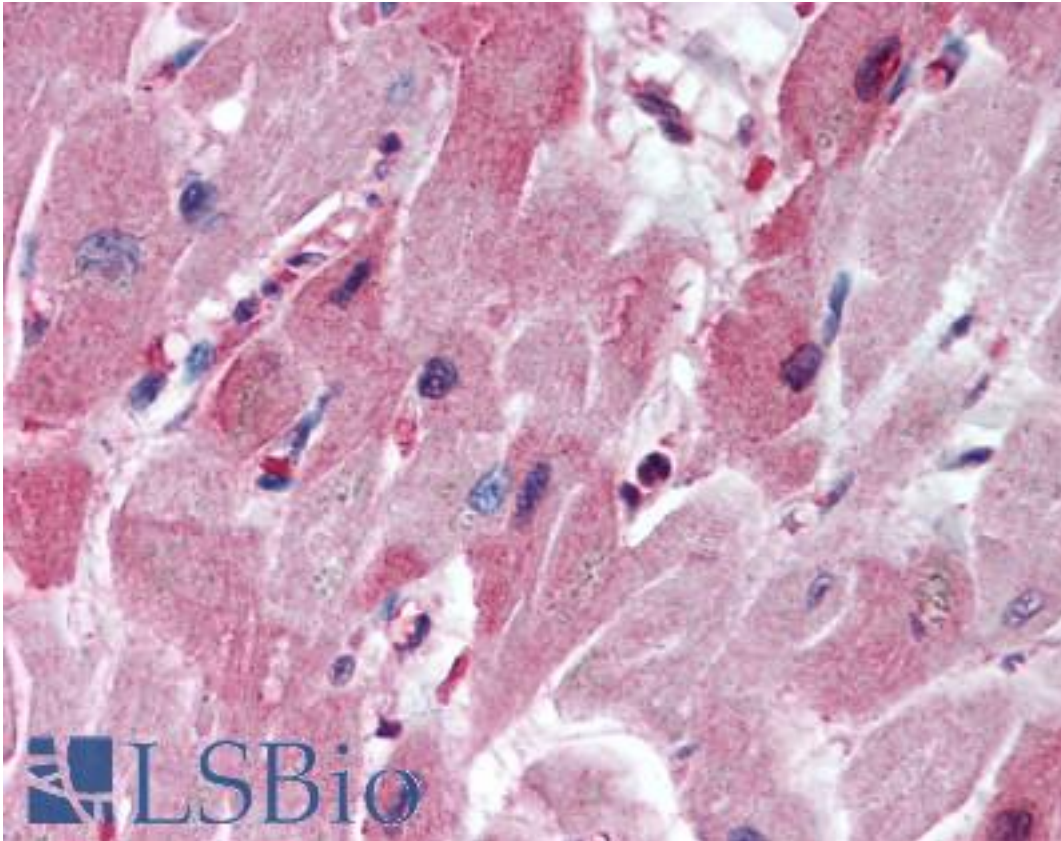


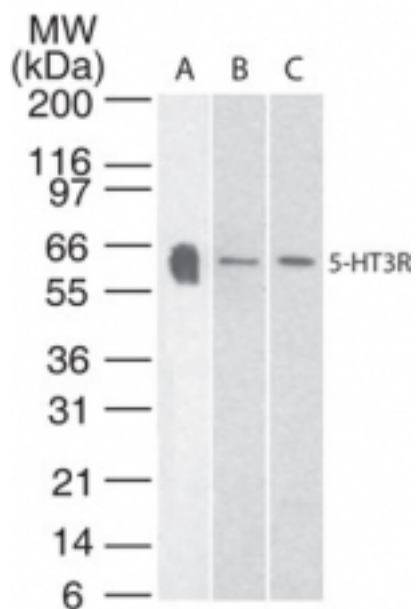
HTR3A / 5-HT3A Receptor Rabbit anti-Rat Polyclonal (aa21-36) Antibody - LS-B2042 - LSBio	
<b>CatalogID:</b>	LS-B2042
<b>Validation:</b>	This antibody replaces catalog number LS-C795. It has been validated for use in the following assays: IHC-P.
<b>Target:</b>	5-hydroxytryptamine (serotonin) receptor 3A, ionotropic (HTR3A)
<b>Synonyms:</b>	HTR3A Antibody, 5-HT3-A Antibody, 5-HT3R-A Antibody, 5-HT3 receptor Antibody, 5HT3 serotonin receptor Antibody, 5-HT3A Antibody, 5-HT3a receptor Antibody, 5-hydroxytryptamine receptor 3 Antibody, 5-HT-3 Antibody, 5-HT3 Antibody, 5-HT3R Antibody, 5HT3R Antibody, HTR3 Antibody, Serotonin receptor 3A Antibody
<b>Family / Subfamily:</b>	Ion channel / Serotonin 5-HT3 receptor
<b>Host</b>	HTR3A antibody was produced in Rabbit
<b>Clonality:</b>	Polyclonal
<b>Isotype:</b>	IgG
<b>Immunogen Species:</b>	HTR3A / 5-HT3A Receptor antibody was raised against Rat
<b>Antigen Type:</b>	Synthetic peptide
<b>Immunogen:</b>	HTR3A / 5-HT3A Receptor antibody was raised against this antibody was developed by immunizing rabbits with a mixture of synthetic peptides corresponding to amino acids 21-36 (RATQAHSTTQPALLRL) and 421-436 (LSSIRHSLEKRDEMRE) of rat 5-HT3A receptor, GenBank no AAB02949. Percent identity by BLAST analysis: Rat (100%); Mouse (88%); Hamster (81%).
<b>Specificity:</b>	A mixture of synthetic peptides corresponding to amino acids 21-36 and 421-436 of rat 5-HT3 receptor
<b>Epitope:</b>	aa21-36
<b>Reactivity:</b>	Rat, Human
<b>Purification:</b>	Protein G purified
<b>Presentation:</b>	PBS, 0.2% gelatin, 0.05% sodium azide.
<b>Recommended Storage:</b>	Long term: -20°C; Short term: +4°C. Avoid repeat freeze-thaw cycles.
<b>Usage Summary:</b>	Immunohistochemistry: LS-B2042 was validated for use in immunohistochemistry on a panel of 21 formalin-fixed, paraffin-embedded (FFPE) human tissues after heat induced antigen retrieval in pH 6.0 citrate buffer. After incubation with the primary antibody, slides were incubated with biotinylated secondary antibody, followed by alkaline phosphatase-streptavidin and chromogen. The stained slides were evaluated by a pathologist to confirm staining specificity. The optimal working concentration for LS-B2042 was determined to be 5 µg/ml.
<b>Uses:</b>	IHC - Paraffin (5 µg/ml), Western blot (1 µg/ml) (Optimal dilution to be determined by the researcher)
<b>Size:</b>	50 µg
<b>Concentration:</b>	0.5 mg/ml

**Immunohistochemistry Image:**



Anti-5HT3A receptor antibody IHC of human heart. Immunohistochemistry of formalin-fixed, paraffin-embedded tissue after heat-induced antigen retrieval. Antibody LS-B2042 concentration 5 ug/ml.

**Western Blot Image:**



Western blot of 5-HT3R in human brain tissue lysate with anti-5-HT3R pcAb . A protein band of approximate molecular weight of 47-50 kDa was detected.

<b>Requested From:</b>	Japan
Laboratory Reagent For In Vitro Research Use Only	
Not for resale without prior written consent from LifeSpan BioSciences, Inc.	
Created on 9/23/2014	
© 2014 LifeSpan BioSciences	