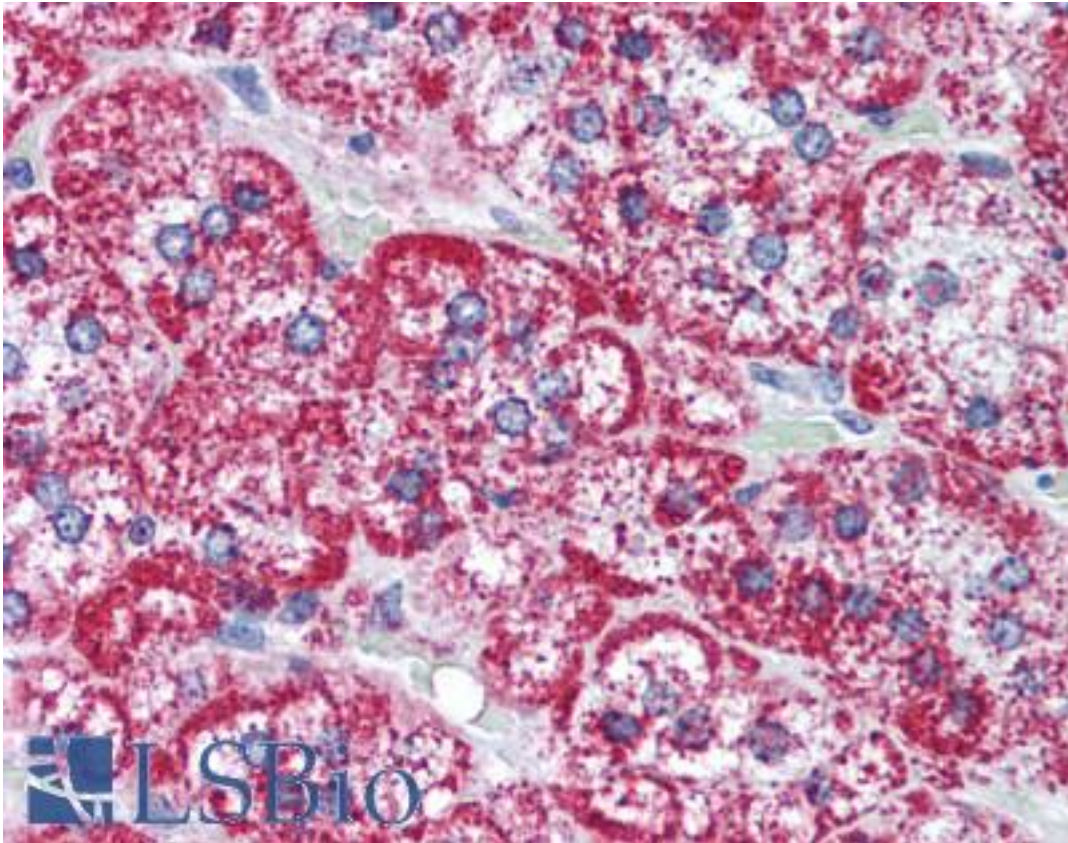


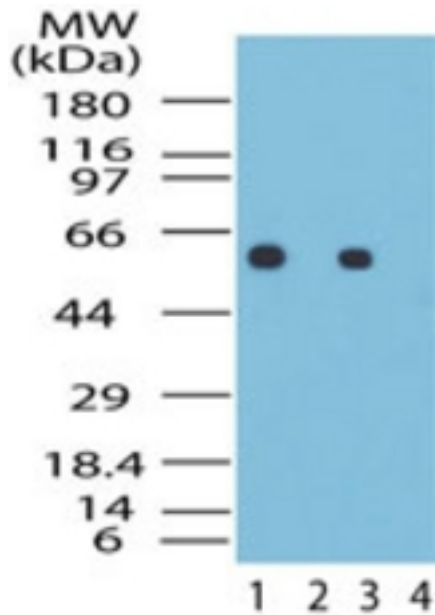
HSPD1 / HSP60 Rabbit anti-Human Polyclonal (aa350-400) Antibody - LS-B2039 - LSBio	
CatalogID:	LS-B2039
Validation:	This antibody replaces catalog number LS-C19405. It has been validated for use in the following assays: IHC-P.
Target:	heat shock 60kDa protein 1 (chaperonin) (HSPD1)
Synonyms:	HSPD1 Antibody, 60 kDa chaperonin Antibody, CPN60 Antibody, Heat shock protein 65 Antibody, Heat shock protein 60 Antibody, HSP-60 Antibody, HSP60 Antibody, HuCHA60 Antibody, HLD4 Antibody, HSP65 Antibody, p60 lymphocyte protein Antibody, SPG13 Antibody, Chaperonin 60 Antibody, GROEL Antibody
Host	HSPD1 antibody was produced in Rabbit
Clonality:	Polyclonal
Immunogen Species:	HSPD1 / HSP60 antibody was raised against Human
Specificity:	A portion of amino acids 350-400 of human Hsp60 was used as the immunogen.
Epitope:	aa350-400
Reactivity:	Human, Chimpanzee, Monkey, Bovine, Dog, Chicken
Purification:	Protein G purified
Presentation:	PBS, 0.2% gelatin, 0.05% sodium azide.
Recommended Storage:	Short term 4°C, long term aliquot and store at -20°C, avoid freeze thaw cycles.
Usage Summary:	Immunohistochemistry: LS-B2039 was validated for use in immunohistochemistry on a panel of 21 formalin-fixed, paraffin-embedded (FFPE) human tissues after heat induced antigen retrieval in pH 6.0 citrate buffer. After incubation with the primary antibody, slides were incubated with biotinylated secondary antibody, followed by alkaline phosphatase-streptavidin and chromogen. The stained slides were evaluated by a pathologist to confirm staining specificity. The optimal working concentration for LS-B2039 was determined to be 10 ug/ml.
Uses:	IHC - Paraffin (10 µg/ml), Western blot (0.2 - 1 µg/ml) (Optimal dilution to be determined by the researcher)
Size:	50 µg
Concentration:	0.5 mg/ml

Immunohistochemistry Image:



Anti-HSPD1 antibody IHC of human adrenal. Immunohistochemistry of formalin-fixed, paraffin-embedded tissue after heat-induced antigen retrieval. Antibody LS-B2039 concentration 10 ug/ml.

Western Blot Image:



Western blot of Hsp60 in the 1) absence and 2) presence of immunizing peptide in HeLa cell lysate and the 3) absence and 4) presence of immunizing peptide in Jurkat cell lysate using antibody at 0.2 ug/ml.

Requested From:

Japan

Laboratory Reagent For In Vitro Research Use Only

Not for resale without prior written consent from LifeSpan BioSciences, Inc.

Created on 9/23/2014

© 2014 LifeSpan BioSciences