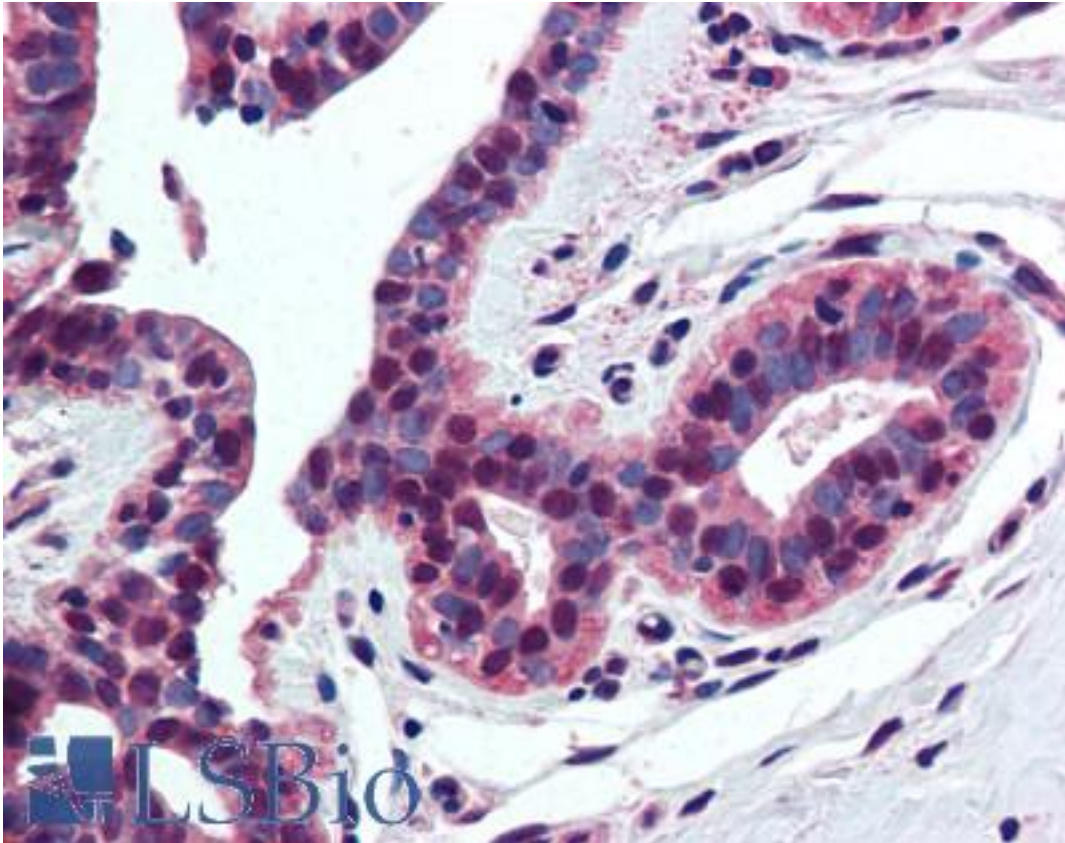


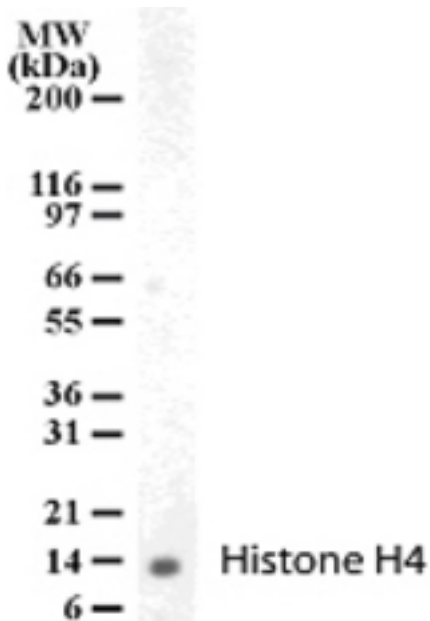
Histone H4 Rabbit anti-Human Polyclonal (aa15-30) Antibody - LS-B2036 - LSBio	
CatalogID:	LS-B2036
Validation:	This antibody replaces catalog number LS-C695. It has been validated for use in the following assays: IHC-P.
Target:	Histone H4
Host	Histone H4 antibody was produced in Rabbit
Clonality:	Polyclonal
Isotype:	IgG
Immunogen Species:	Histone H4 antibody was raised against Human
Antigen Type:	Synthetic peptide
Immunogen:	Histone H4 antibody was raised against synthetic peptide from human Histone H4.
Specificity:	A synthetic peptide containing amino acid residues 15-30 of human Histone H4 GAKRHRKVLDRDNIQGI. This sequence is conserved across mammalian, invertebrate and plant species. An NCBI BLAST shows no cross-reactivity of this sequence with other known histones.
Epitope:	aa15-30
Reactivity:	Human, Monkey, Mouse, Rat, Chicken, Xenopus, Zebrafish, Drosophila
Purification:	Protein G purified
Presentation:	PBS, 0.02% sodium azide.
Recommended Storage:	Short term 4°C, long term aliquot and store at -20°C, avoid freeze thaw cycles.
Usage Summary:	Immunohistochemistry: LS-B2036 was validated for use in immunohistochemistry on a panel of 21 formalin-fixed, paraffin-embedded (FFPE) human tissues after heat induced antigen retrieval in pH 6.0 citrate buffer. After incubation with the primary antibody, slides were incubated with biotinylated secondary antibody, followed by alkaline phosphatase-streptavidin and chromogen. The stained slides were evaluated by a pathologist to confirm staining specificity. The optimal working concentration for LS-B2036 was determined to be 5 ug/ml.
Uses:	IHC - Paraffin (5 µg/ml), Western blot (2 µg/ml) (Optimal dilution to be determined by the researcher)
Size:	50 µg
Concentration:	0.5 mg/ml

Immunohistochemistry Image:



Anti-Histone H4 antibody IHC of human breast. Immunohistochemistry of formalin-fixed, paraffin-embedded tissue after heat-induced antigen retrieval. Antibody LS-B2036 concentration 5 ug/ml.

Western Blot Image:



Western blot of Histone H4 in human PBMC cell lysate with antibody.

Requested From:	Japan
Laboratory Reagent For In Vitro Research Use Only	
Not for resale without prior written consent from LifeSpan BioSciences, Inc.	
Created on 9/23/2014	
© 2014 LifeSpan BioSciences	