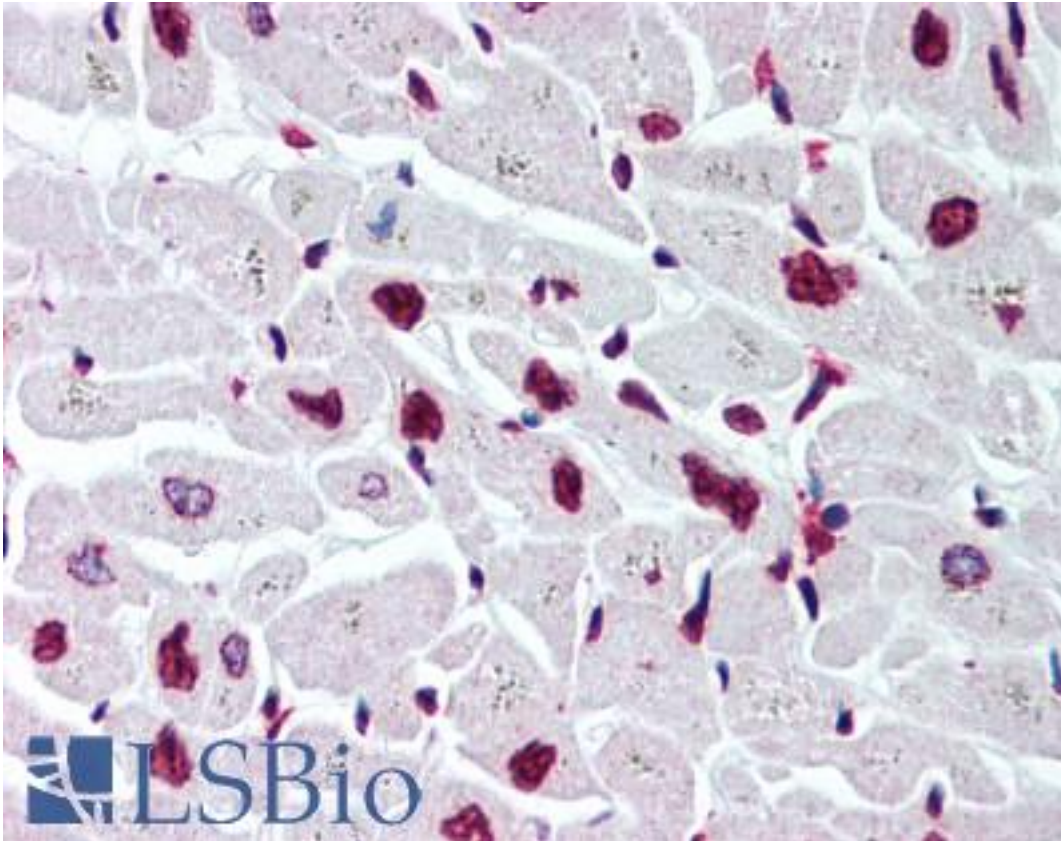


**Histone H2B Rabbit anti-Human Polyclonal (aa111-125) Antibody - LS-B2035 - LSBio**

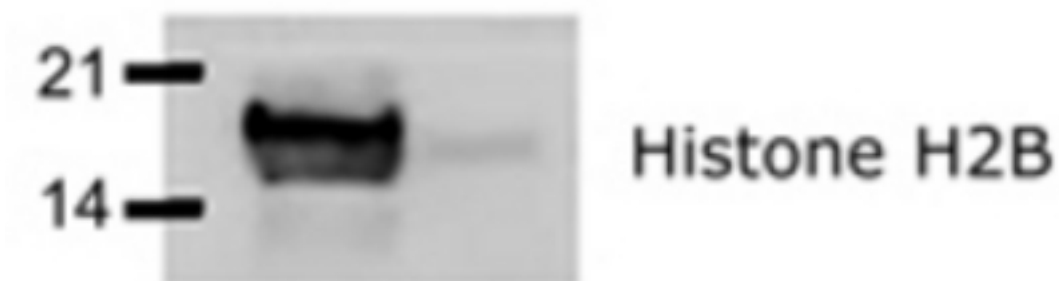
<b>CatalogID:</b>	LS-B2035
<b>Validation:</b>	This antibody replaces catalog number LS-C696. It has been validated for use in the following assays: IHC-P.
<b>Target:</b>	Histone H2B
<b>Host</b>	Histone H2B antibody was produced in Rabbit
<b>Clonality:</b>	Polyclonal
<b>Isotype:</b>	IgG
<b>Immunogen Species:</b>	Histone H2B antibody was raised against Human
<b>Antigen Type:</b>	Synthetic peptide
<b>Immunogen:</b>	Histone H2B antibody was raised against this antibody was generated by immunizing rabbits with a synthetic peptide corresponding to amino acid residues 111-125 AVSEGTKAVTKYTSSof human Histone H2B; GenBank no. CAI19747.1. This peptide sequence is 100% conserved between multiple species including human, mouse, rat, dog, chimpanzee, cow, chicken, duck, zebrafish, and drosophila. Percent identity by BLAST analysis: Human, Orangutan, Mouse, Rat, Bovine, Chicken, Stickleback, Pufferfish, Zebrafish, Drosophila, Mosquito, Nematode (100%).
<b>Specificity:</b>	A synthetic peptide corresponding to amino acid residues 111-125 AVSEGTKAVTKYTSSof human Histone H2B; GenBank no. CAI19747.1. This peptide sequence is 100% conserved between multiple species including human, mouse, rat, dog, chimpanzee, cow, chicken, duck, zebrafish, and drosophila.
<b>Epitope:</b>	aa111-125
<b>Reactivity:</b>	Human, Orangutan, Mouse, Rat, Bovine, Chicken, Zebrafish, Drosophila, Insect
<b>Purification:</b>	Protein G purified
<b>Presentation:</b>	PBS, 0.05% BSA, 0.05% sodium azide
<b>Recommended Storage:</b>	Short term 4°C, long term aliquot and store at -20°C, avoid freeze thaw cycles.
<b>Usage Summary:</b>	Immunohistochemistry: LS-B2035 was validated for use in immunohistochemistry on a panel of 21 formalin-fixed, paraffin-embedded (FFPE) human tissues after heat induced antigen retrieval in pH 6.0 citrate buffer. After incubation with the primary antibody, slides were incubated with biotinylated secondary antibody, followed by alkaline phosphatase-streptavidin and chromogen. The stained slides were evaluated by a pathologist to confirm staining specificity. The optimal working concentration for LS-B2035 was determined to be 5 ug/ml.
<b>Uses:</b>	IHC - Paraffin (5 µg/ml), Western blot (2 µg/ml) (Optimal dilution to be determined by the researcher)
<b>Size:</b>	50 µg
<b>Concentration:</b>	0.5 mg/ml

**Immunohistochemistry Image:**



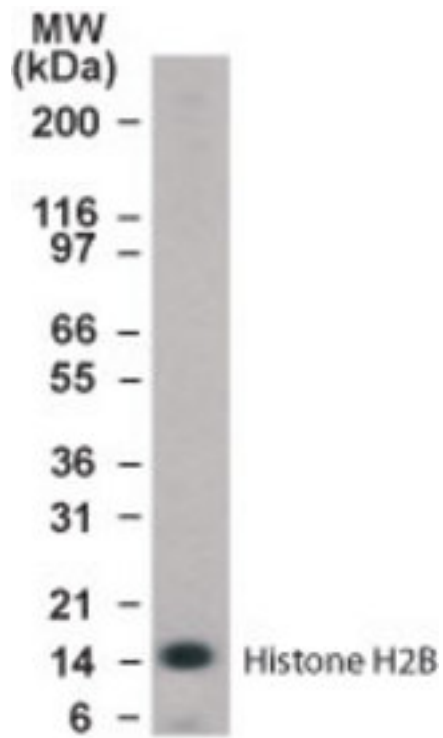
Anti-Histone H2B antibody IHC of human heart. Immunohistochemistry of formalin-fixed, paraffin-embedded tissue after heat-induced antigen retrieval. Antibody LS-B2035 concentration 5 ug/ml.

**Western Blot Image:**



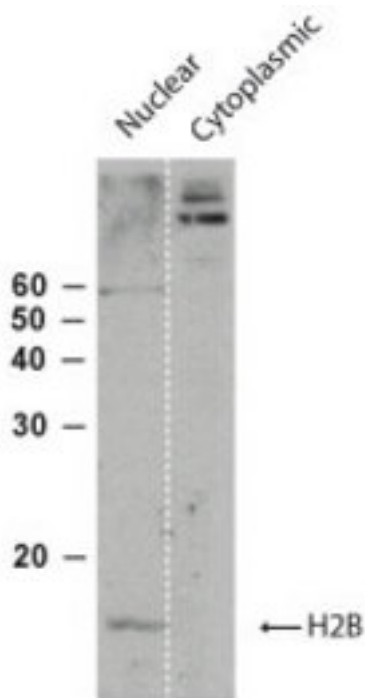
Western blot of fractionated Cos-7 cells using antibody anti-Histone H2B. Cos-7 cells were fractionated into nuclear & cytosolic/membrane fractions. Approximately ~15 ug of each fraction was separated on SDS PAGE. Lane 1, Nuclear fraction.

**Western Blot Image:**



Western blot of Histone H2B in human PBMC lysate with antibody.

**Western Blot Image:**



Western blot of Histone H2B using antibody at 1:250 in nuclear and cytoplasmic fractionsumade from Drosophila head extracts.

<b>Requested From:</b>	Japan
Laboratory Reagent For In Vitro Research Use Only	
Not for resale without prior written consent from LifeSpan BioSciences, Inc.	
Created on 9/23/2014	
© 2014 LifeSpan BioSciences	