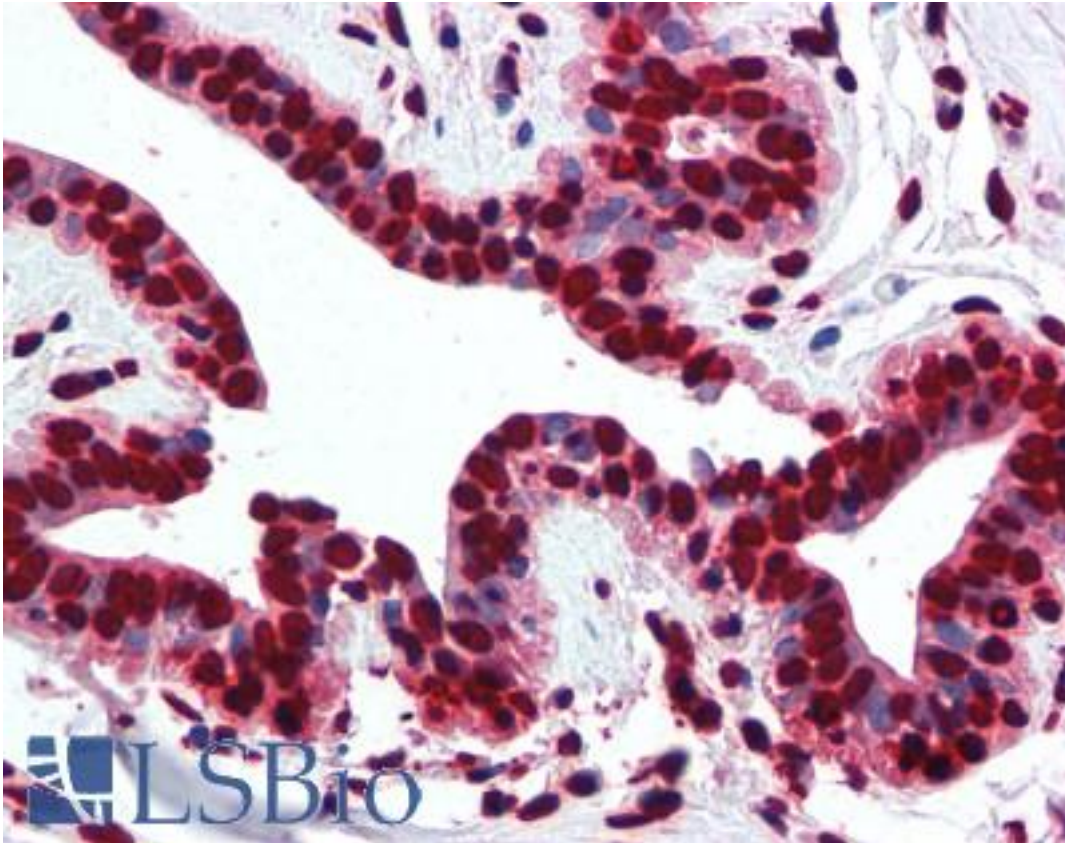


Histone H2A Rabbit anti-Human Polyclonal (aa1-15) Antibody - LS-B2034 - LSBio

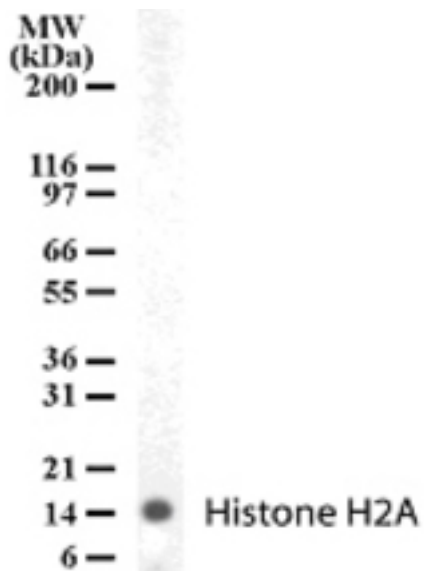
CatalogID:	LS-B2034
Validation:	This antibody replaces catalog number LS-C694. It has been validated for use in the following assays: IHC-P.
Target:	Histone H2A
Host	Histone H2A antibody was produced in Rabbit
Clonality:	Polyclonal
Isotype:	IgG
Immunogen Species:	Histone H2A antibody was raised against Human
Antigen Type:	Synthetic peptide
Immunogen:	Histone H2A antibody was raised against this antibody was generated by immunizing rabbits with a mixture of synthetic peptides containing amino acid residues 1-15 (MSGRGKQGGKARAKA) and 81-96 (PRHLQLAIRNDEELNK) of human Histone H2A, GenBank no. ref NP_066390.1 . Percent identity by BLAST analysis: Human, Monkey, Mouse, Rat, Hamster, Elephant, Bovine, Chicken (100%).
Specificity:	A mixture of synthetic peptides containing amino acid residues 1-15 and 81-96 of human Histone H2A.
Epitope:	aa1-15
Reactivity:	Human, Mouse
Purification:	Protein G purified
Presentation:	PBS, 0.05% BSA, 0.05% sodium azide.
Recommended Storage:	Short term 4°C, long term aliquot and store at -20°C, avoid freeze thaw cycles.
Usage Summary:	Immunohistochemistry: LS-B2034 was validated for use in immunohistochemistry on a panel of 21 formalin-fixed, paraffin-embedded (FFPE) human tissues after heat induced antigen retrieval in pH 6.0 citrate buffer. After incubation with the primary antibody, slides were incubated with biotinylated secondary antibody, followed by alkaline phosphatase-streptavidin and chromogen. The stained slides were evaluated by a pathologist to confirm staining specificity. The optimal working concentration for LS-B2034 was determined to be 5 ug/ml.
Uses:	IHC - Paraffin (5 µg/ml), Western blot (2 µg/ml) (Optimal dilution to be determined by the researcher)
Size:	50 µg
Concentration:	0.5 mg/ml

Immunohistochemistry Image:



Anti-Histone H2A antibody IHC of human breast. Immunohistochemistry of formalin-fixed, paraffin-embedded tissue after heat-induced antigen retrieval. Antibody LS-B2034 concentration 5 ug/ml.

Western Blot Image:



Western blot of Histone H2A in human PBMC lysate with antibody.

Requested From:

Japan

Laboratory Reagent For In Vitro Research Use Only

Not for resale without prior written consent from LifeSpan BioSciences, Inc.

Created on 9/23/2014

© 2014 LifeSpan BioSciences