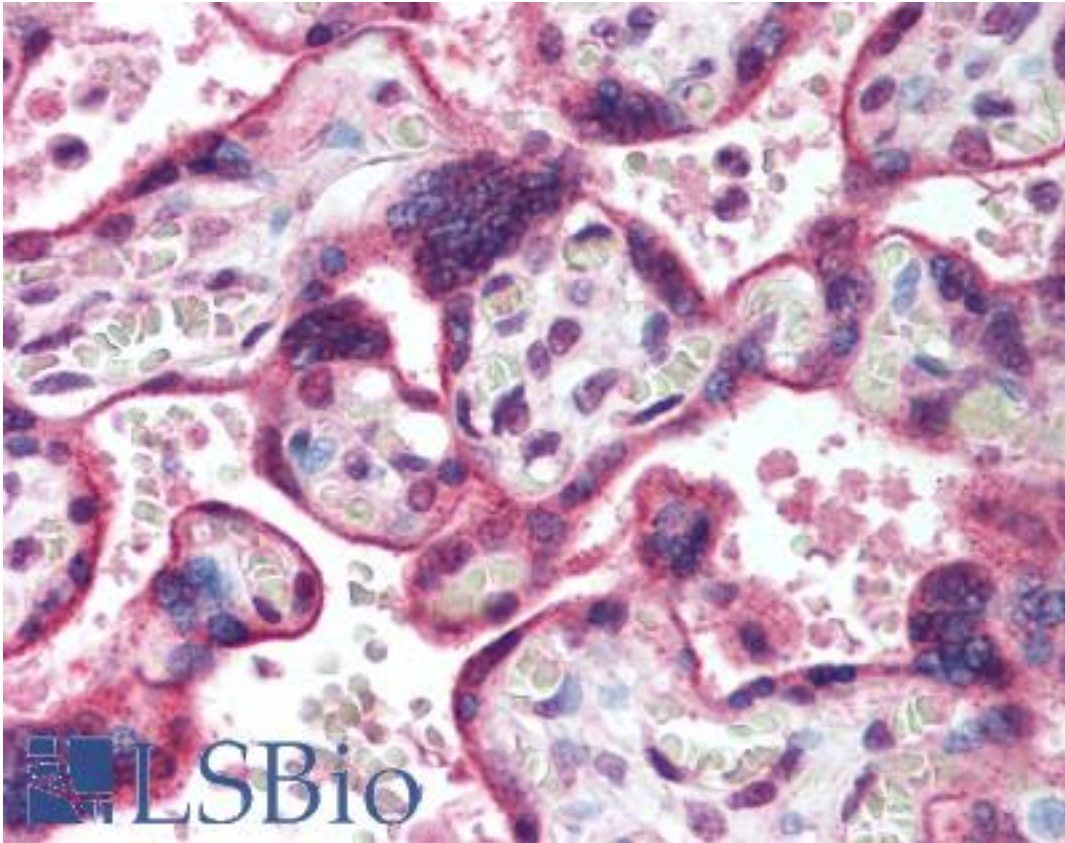


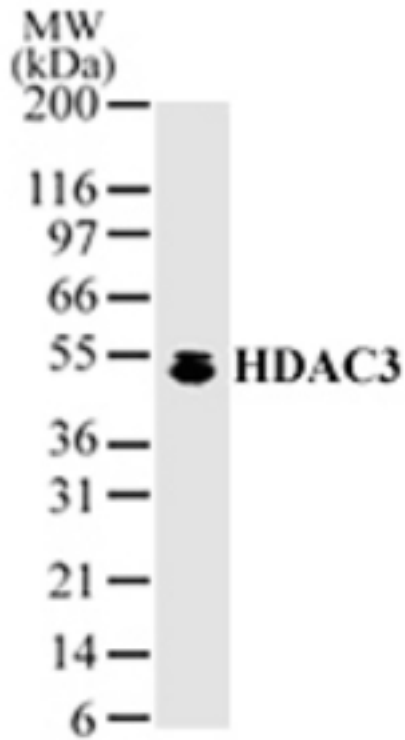
HDAC3 Rabbit anti-Human Polyclonal (aa2-17) Antibody - LS-B2032 - LSBio	
<b>CatalogID:</b>	LS-B2032
<b>Validation:</b>	This antibody replaces catalog number LS-C690. It has been validated for use in the following assays: IHC-P.
<b>Target:</b>	histone deacetylase 3 (HDAC3)
<b>Synonyms:</b>	HDAC3 Antibody, RPD3 Antibody, SMAP45 Antibody, HD3 Antibody, Histone deacetylase 3 Antibody, RPD3-2 Antibody
<b>Family / Subfamily:</b>	Histone Deacetylase / not assigned-Histone Deacetylase
<b>Host</b>	HDAC3 antibody was produced in Rabbit
<b>Clonality:</b>	Polyclonal
<b>Isotype:</b>	IgG
<b>Immunogen Species:</b>	HDAC3 antibody was raised against Human
<b>Antigen Type:</b>	Synthetic peptide
<b>Immunogen:</b>	HDAC3 antibody was raised against synthetic peptide from human HDAC3.
<b>Specificity:</b>	A synthetic peptide corresponding to amino acids 2-17 of human HDAC3.
<b>Epitope:</b>	aa2-17
<b>Reactivity:</b>	Human
<b>Purification:</b>	Protein G purified
<b>Presentation:</b>	PBS, 0.2% gelatin, 0.05% sodium azide.
<b>Recommended Storage:</b>	Short term 4°C, long term aliquot and store at -20°C, avoid freeze thaw cycles.
<b>Usage Summary:</b>	Immunohistochemistry: LS-B2032 was validated for use in immunohistochemistry on a panel of 21 formalin-fixed, paraffin-embedded (FFPE) human tissues after heat induced antigen retrieval in pH 6.0 citrate buffer. After incubation with the primary antibody, slides were incubated with biotinylated secondary antibody, followed by alkaline phosphatase-streptavidin and chromogen. The stained slides were evaluated by a pathologist to confirm staining specificity. The optimal working concentration for LS-B2032 was determined to be 10 ug/ml.
<b>Uses:</b>	IHC - Paraffin (10 µg/ml), Western blot (2 µg/ml), Immunoprecipitation, Chromatin Immunoprecipitation (Optimal dilution to be determined by the researcher)
<b>Size:</b>	50 µg
<b>Concentration:</b>	0.5 mg/ml

**Immunohistochemistry Image:**



Anti-HDAC3 antibody IHC of human placenta. Immunohistochemistry of formalin-fixed, paraffin-embedded tissue after heat-induced antigen retrieval. Antibody LS-B2032 concentration 10 ug/ml.

**Western Blot Image:**



Western blot of HDAC3 in HeLa cell lysate with anti-HDAC3 antibody.

**Requested From:**

Japan

Laboratory Reagent For In Vitro Research Use Only

Not for resale without prior written consent from LifeSpan BioSciences, Inc.

Created on 9/23/2014

© 2014 LifeSpan BioSciences