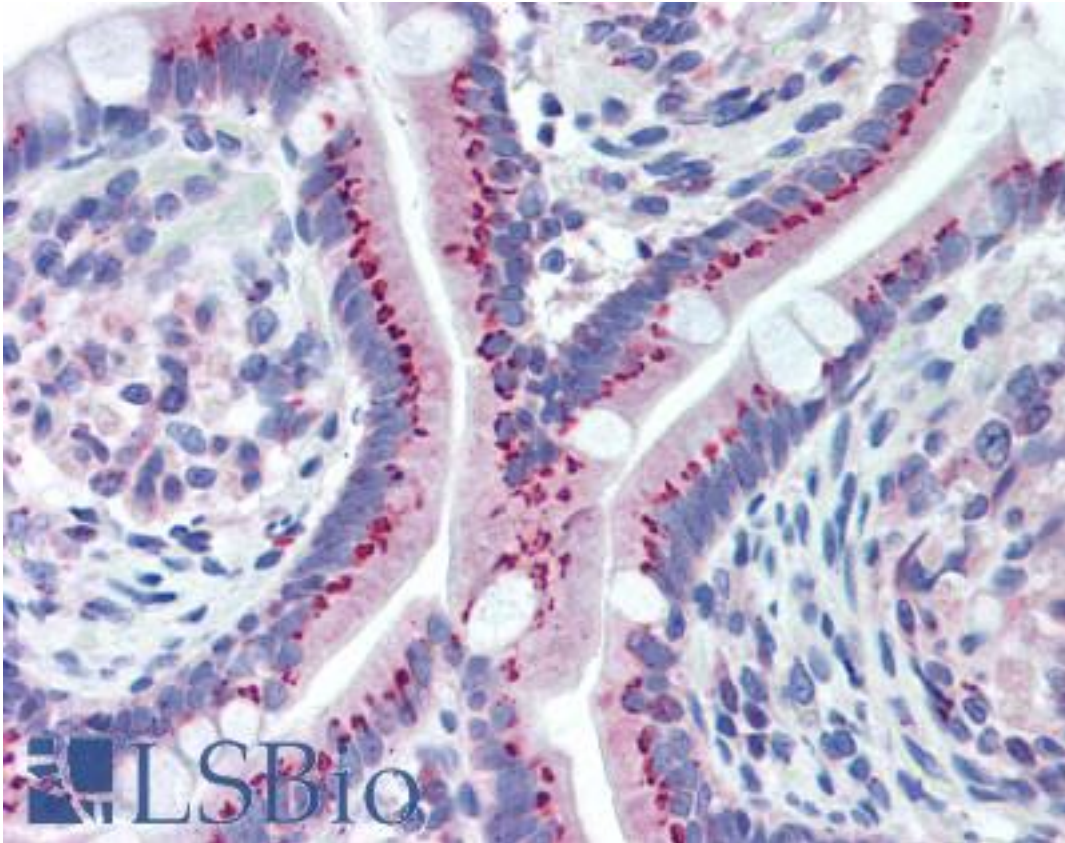


| GOLM1 / GP73 / GOLPH2 Rabbit anti-Human Polyclonal (aa67-81) Antibody - LS-B2030 - LSBio | |
|--|---|
| CatalogID: | LS-B2030 |
| Validation: | This antibody replaces catalog number LS-C682. It has been validated for use in the following assays: IHC-P. |
| Target: | golgi membrane protein 1 (GOLM1) |
| Synonyms: | GOLM1 Antibody, BA379P1.3 Antibody, Golgi membrane protein GP73 Antibody, Golgi phosphoprotein 2 Antibody, Golgi protein, 73-kD Antibody, gp73 Antibody, GOLPH2 Antibody, PSEC0257 Antibody, C9orf155 Antibody, Golgi membrane protein 1 Antibody |
| Host | GOLM1 antibody was produced in Rabbit |
| Clonality: | Polyclonal |
| Isotype: | IgG |
| Immunogen Species: | GOLM1 / GP73 / GOLPH2 antibody was raised against Human |
| Antigen Type: | Synthetic peptide |
| Immunogen: | GOLM1 / GP73 / GOLPH2 antibody was raised against synthetic peptide from human GOLM1 / GOLPH2. |
| Specificity: | Synthetic peptides corresponding to amino acids 67-81 of human GOLPH2. |
| Epitope: | aa67-81 |
| Reactivity: | Human |
| Purification: | Protein G purified |
| Presentation: | PBS, pH 7.3, 0.5% BSA, 0.05% sodium azide. |
| Recommended Storage: | Short term 4°C, long term aliquot and store at -20°C, avoid freeze thaw cycles. |
| Usage Summary: | Immunohistochemistry: LS-B2030 was validated for use in immunohistochemistry on a panel of 21 formalin-fixed, paraffin-embedded (FFPE) human tissues after heat induced antigen retrieval in pH 6.0 citrate buffer. After incubation with the primary antibody, slides were incubated with biotinylated secondary antibody, followed by alkaline phosphatase-streptavidin and chromogen. The stained slides were evaluated by a pathologist to confirm staining specificity. The optimal working concentration for LS-B2030 was determined to be 1:100. |
| Uses: | IHC - Paraffin (1:100), ELISA (1:100 - 1:1000) (Optimal dilution to be determined by the researcher) |
| Size: | 50 µg |
| Concentration: | 0.5 mg/ml |

Immunohistochemistry Image:



Anti-GOLM1 / GOLPH2 antibody IHC of human small intestine. Immunohistochemistry of formalin-fixed, paraffin-embedded tissue after heat-induced antigen retrieval. Antibody LS-B2030 dilution 1:100.

Requested From:

Japan

Laboratory Reagent For In Vitro Research Use Only

Not for resale without prior written consent from LifeSpan BioSciences, Inc.

Created on 9/23/2014

© 2014 LifeSpan BioSciences