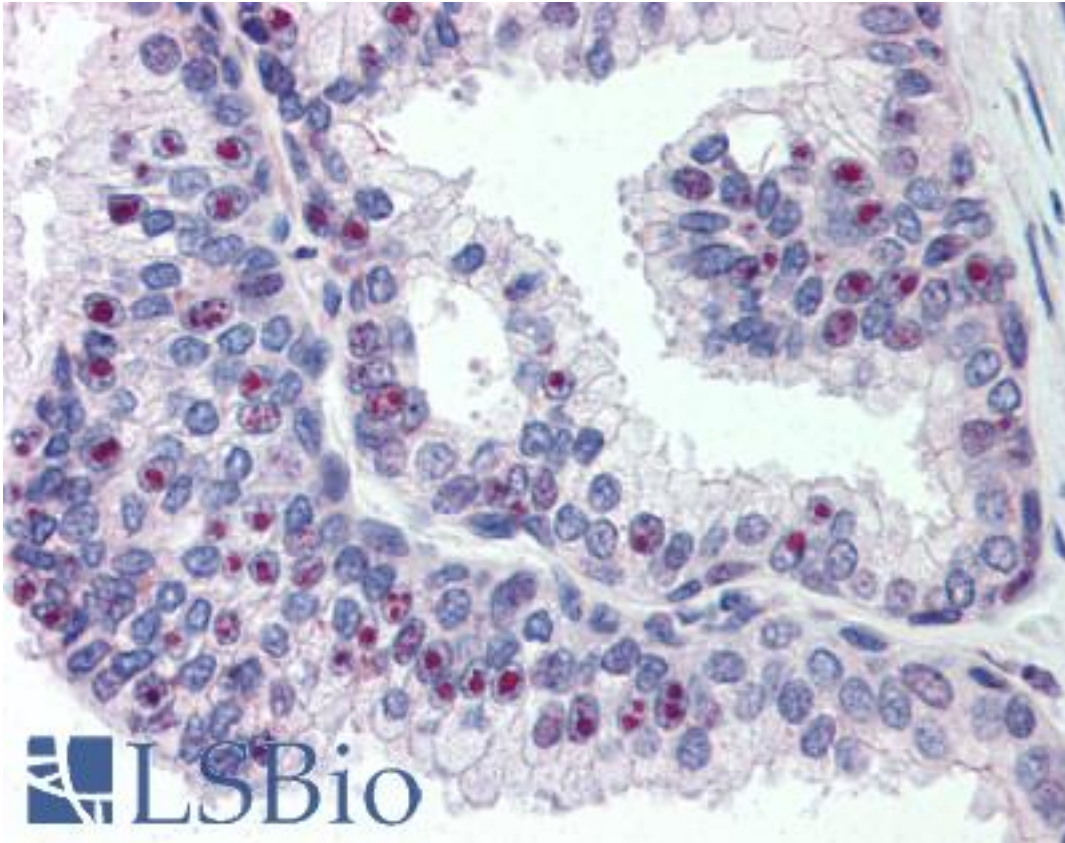


CHD2 Rabbit anti-Human Polyclonal (aa1595-1611) Antibody - LS-B203 - LSBio	
CatalogID:	LS-B203
Validation:	This antibody replaces catalog number LS-C3025. It has been validated for use in the following assays: IHC.
Target:	chromodomain helicase DNA binding protein 2 (CHD2)
Synonyms:	CHD2 Antibody, ATP-dependent helicase CHD2 Antibody, CHD-2 Antibody
Host	CHD2 antibody was produced in Rabbit
Clonality:	Polyclonal
Immunogen Species:	CHD2 antibody was raised against Human
Antigen Type:	Synthetic peptide
Immunogen:	CHD2 antibody was raised against synthetic peptide from human CHD2.
Specificity:	Amino acids 1595 to 1611 of human CHD2
Epitope:	aa1595-1611
Reactivity:	Human
Purification:	Protein G purified
Presentation:	PBS, 0.09% sodium azide.
Recommended Storage:	Short term 4°C, long term aliquot and store at -20°C, avoid freeze thaw cycles.
Usage Summary:	Immunohistochemistry: LS-B203 was validated for use in immunohistochemistry on a panel of 21 formalin-fixed, paraffin-embedded (FFPE) human tissues after heat induced antigen retrieval in pH 6.0 citrate buffer. After incubation with the primary antibody, slides were incubated with biotinylated secondary antibody, followed by alkaline phosphatase-streptavidin and chromogen. The stained slides were evaluated by a pathologist to confirm staining specificity. The optimal working concentration for LS-B203 was determined to be 20 ug/ml.
Uses:	IHC - Paraffin (20 µg/ml), ELISA (1:000 - 1:1000) (Optimal dilution to be determined by the researcher)
Size:	50 µg
Concentration:	1 mg/ml

Immunohistochemistry Image:



Anti-CHD2 antibody IHC of human prostate. Immunohistochemistry of formalin-fixed, paraffin-embedded tissue after heat-induced antigen retrieval. Antibody LS-B203 concentration 20 ug/ml.

Requested From:

Japan

Laboratory Reagent For In Vitro Research Use Only

Not for resale without prior written consent from LifeSpan BioSciences, Inc.

Created on 9/23/2014

© 2014 LifeSpan BioSciences