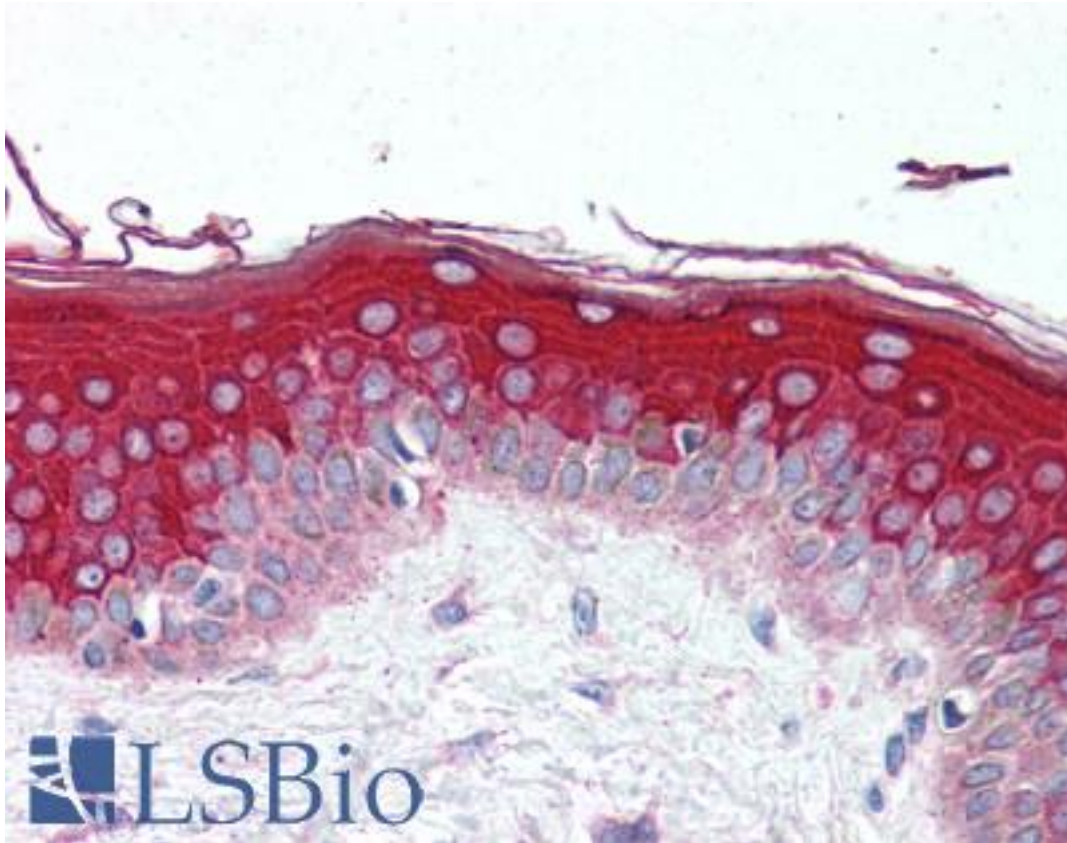


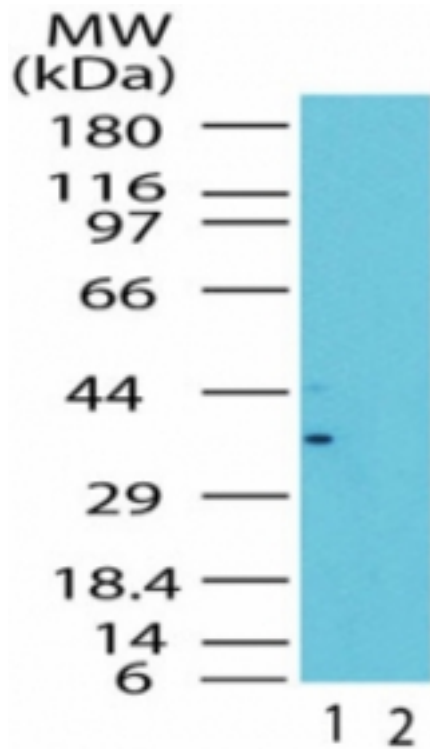
MLST8 / GBL Rabbit anti-Human Polyclonal (aa150-200) Antibody - LS-B2029 - LSBio	
CatalogID:	LS-B2029
Validation:	This antibody replaces catalog number LS-C19412. It has been validated for use in the following assays: IHC-P.
Target:	MTOR associated protein, LST8 homolog (<i>S. cerevisiae</i>) (MLST8)
Synonyms:	MLST8 Antibody, G protein beta subunit-like Antibody, GbetaL Antibody, Gable Antibody, LST8 Antibody, POP3 Antibody, TORC subunit LST8 Antibody, GBL Antibody, Protein GbetaL Antibody, WAT1 Antibody
Host	MLST8 antibody was produced in Rabbit
Clonality:	Polyclonal
Immunogen Species:	MLST8 / GBL antibody was raised against Human
Antigen Type:	Synthetic peptide
Immunogen:	MLST8 / GBL antibody was raised against synthetic peptide from human MLST8 / GBL.
Specificity:	A portion of amino acids 150-200 of human LST8 was used as the immunogen.
Epitope:	aa150-200
Reactivity:	Human, Chimpanzee, Monkey, Mouse, Rat, Bovine, Dog, Chicken, Macaque
Purification:	Protein G purified
Presentation:	PBS, 0.2% gelatin, 0.05% sodium azide.
Recommended Storage:	Short term 4°C, long term aliquot and store at -20°C, avoid freeze thaw cycles.
Usage Summary:	Immunohistochemistry: LS-B2029 was validated for use in immunohistochemistry on a panel of 21 formalin-fixed, paraffin-embedded (FFPE) human tissues after heat induced antigen retrieval in pH 6.0 citrate buffer. After incubation with the primary antibody, slides were incubated with biotinylated secondary antibody, followed by alkaline phosphatase-streptavidin and chromogen. The stained slides were evaluated by a pathologist to confirm staining specificity. The optimal working concentration for LS-B2029 was determined to be 10 ug/ml.
Uses:	IHC - Paraffin (10 µg/ml), Western blot (0.5 - 2 µg/ml) (Optimal dilution to be determined by the researcher)
Size:	50 µg
Concentration:	0.5 mg/ml

Immunohistochemistry Image:



Anti-GBL antibody IHC of human skin. Immunohistochemistry of formalin-fixed, paraffin-embedded tissue after heat-induced antigen retrieval. Antibody LS-B2029 concentration 10 ug/ml.

Western Blot Image:



Western blot of LST8 in the 1) absence and 2) presence of immunizing peptide in human brain lysate using antibody at 0.5 ug/ml.

Requested From:

Japan

Laboratory Reagent For In Vitro Research Use Only

Not for resale without prior written consent from LifeSpan BioSciences, Inc.

Created on 9/23/2014

© 2014 LifeSpan BioSciences