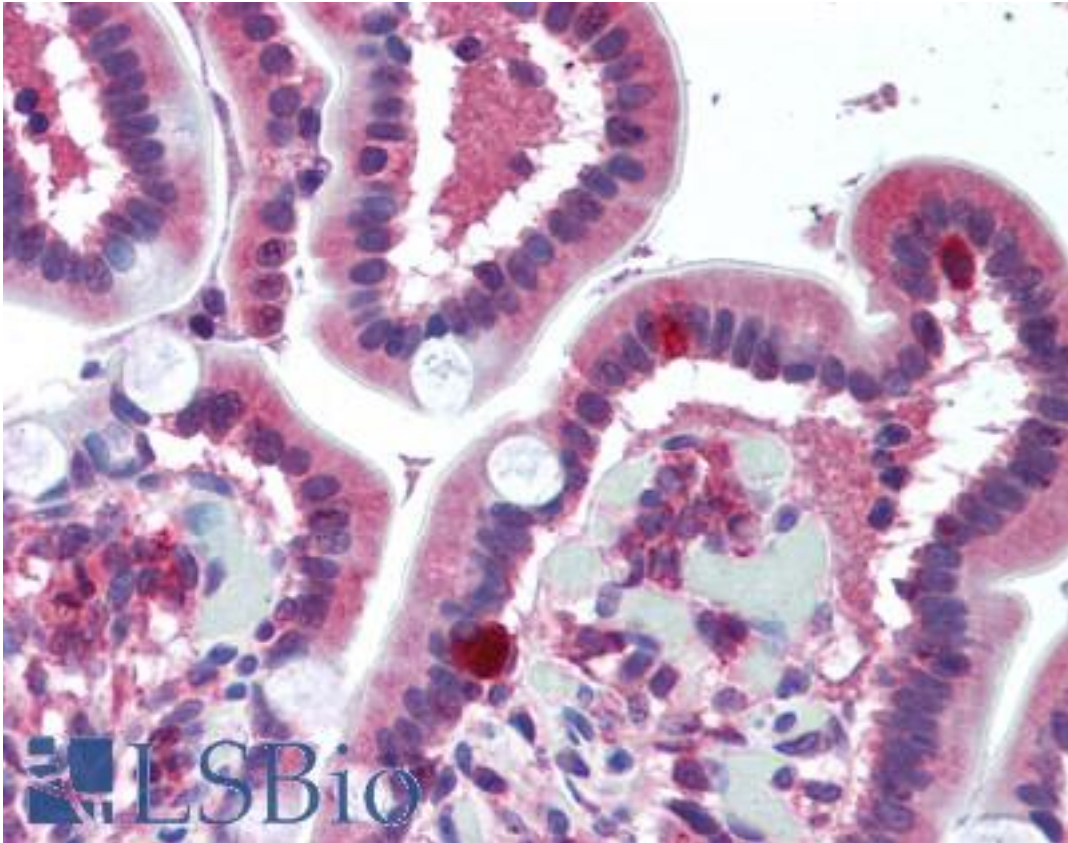


FPR1 / FPR Rabbit anti-Human Polyclonal (aa176-190) Antibody - LS-B2027 - LSBio

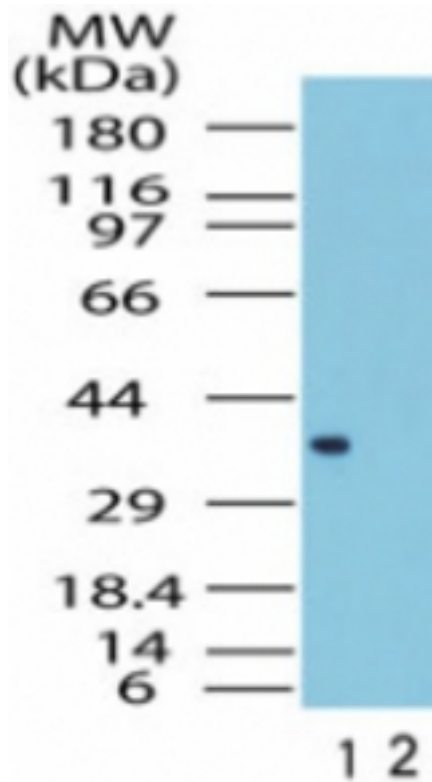
CatalogID:	LS-B2027
Validation:	This antibody replaces catalog number LS-C19408. It has been validated for use in the following assays: IHC-P.
Target:	formyl peptide receptor 1 (FPR1)
Synonyms:	FPR1 Antibody, FPR-1 Antibody, FMet-Leu-Phe receptor Antibody, FMLP Antibody, Formyl peptide receptor 1 Antibody, FPR Antibody, N-formyl peptide receptor Antibody, FMLP receptor Antibody, Fpr receptor Antibody, N-formyl peptide receptor 1 Antibody
Family / Subfamily:	GPCR / Chemoattractant
Host	FPR1 antibody was produced in Rabbit
Clonality:	Polyclonal
Immunogen Species:	FPR1 / FPR antibody was raised against Human
Antigen Type:	Synthetic peptide
Immunogen:	FPR1 / FPR antibody was raised against a synthetic peptide corresponding to amino acids 176-190 of human FPR1 (CTFNFSPWTNDPKER) was used as the immunogen, GenBank no. NP_002020.1 . Percent identity by BLAST analysis: Human, Chimpanzee, Gorilla, Orangutan (100%); Gibbon (93%); Elephant (80%).
Specificity:	A portion of amino acids 150-200 of human FPR1 was used as the immunogen.
Epitope:	aa176-190
Reactivity:	Human, Chimpanzee, Gorilla, Orangutan
Predicted Reactivity:	Gibbon
Purification:	Immunoaffinity purified
Presentation:	PBS, 0.2% gelatin, 0.05% sodium azide.
Recommended Storage:	Short term 4°C, long term aliquot and store at -20°C, avoid freeze thaw cycles.
Usage Summary:	Immunohistochemistry: LS-B2027 was validated for use in immunohistochemistry on a panel of 21 formalin-fixed, paraffin-embedded (FFPE) human tissues after heat induced antigen retrieval in pH 6.0 citrate buffer. After incubation with the primary antibody, slides were incubated with biotinylated secondary antibody, followed by alkaline phosphatase-streptavidin and chromogen. The stained slides were evaluated by a pathologist to confirm staining specificity. The optimal working concentration for LS-B2027 was determined to be 10 ug/ml.
Uses:	IHC - Paraffin (10 µg/ml), Western blot (1 - 3 µg/ml) (Optimal dilution to be determined by the researcher)
Size:	50 µg
Concentration:	0.5 mg/ml

Immunohistochemistry Image:



Anti-FPR1 antibody IHC of human small intestine. Immunohistochemistry of formalin-fixed, paraffin-embedded tissue after heat-induced antigen retrieval. Antibody LS-B2027 concentration 10 ug/ml.

Western Blot Image:



Western blot of FPR1 in the 1) absence and 2) presence of immunizing peptide in human liver lysate using antibody at 1 ug/ml.

Requested From:

Japan

Laboratory Reagent For In Vitro Research Use Only

Not for resale without prior written consent from LifeSpan BioSciences, Inc.

Created on 9/23/2014

© 2014 LifeSpan BioSciences