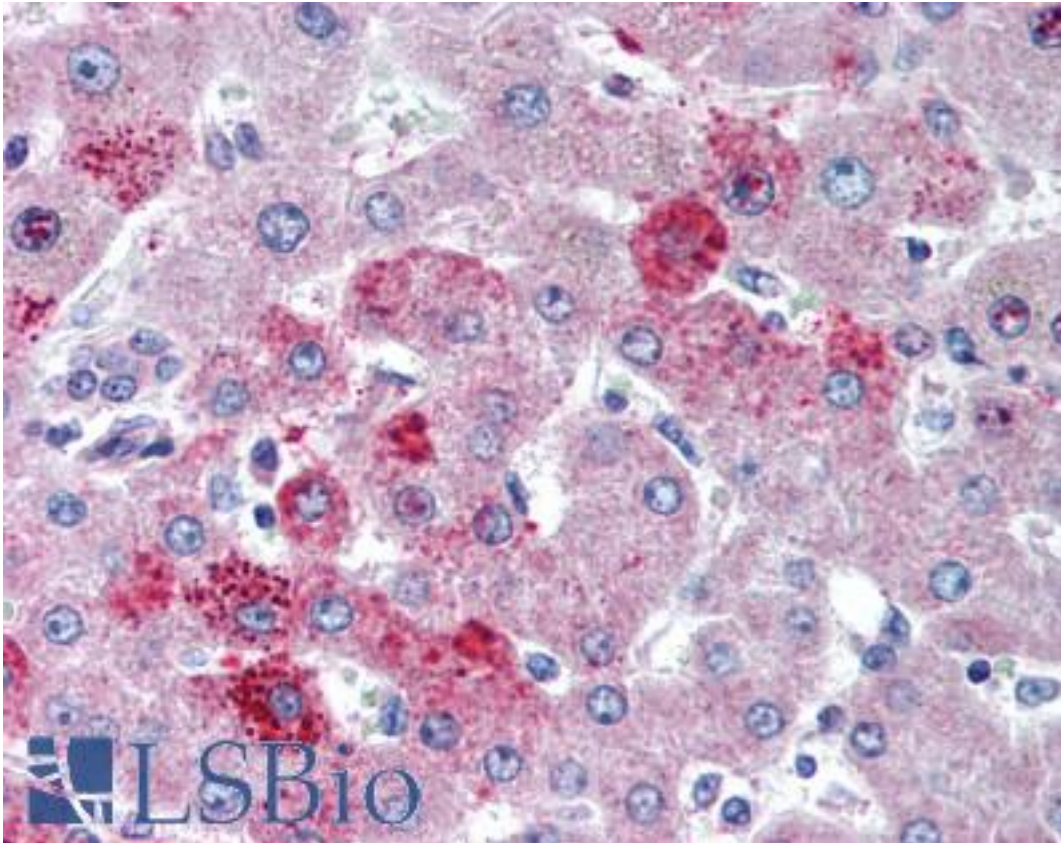


CCR10 / GPR2 Rabbit anti-Human Polyclonal (aa350-362) Antibody - LS-B2023 - LSBio

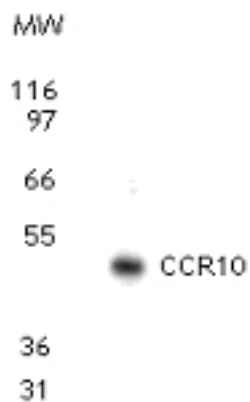
CatalogID:	LS-B2023
Validation:	This antibody replaces catalog number LS-C653. It has been validated for use in the following assays: IHC-P.
Target:	chemokine (C-C motif) receptor 10 (CCR10)
Synonyms:	CCR10 Antibody, C-C CKR-10 Antibody, CC-CKR-10 Antibody, CCR-10 Antibody, C-C chemokine receptor type 10 Antibody, CC chemokine receptor 10 Antibody, G-protein coupled receptor 2 Antibody, GPR2 Antibody, G protein-coupled receptor 2 Antibody
Family / Subfamily:	GPCR / Chemokine
Host	CCR10 antibody was produced in Rabbit
Clonality:	Polyclonal
Isotype:	IgG
Immunogen Species:	CCR10 / GPR2 antibody was raised against Human
Antigen Type:	Synthetic peptide
Immunogen:	CCR10 / GPR2 antibody was raised against a peptide corresponding to amino acids 350-362 of human CCR10. In this region, mouse and human amino acid sequences are 100% identical.
Specificity:	A peptide corresponding to amino acids 350-362 of human CCR10. In this region, mouse and human amino acid sequences are 100% identical
Epitope:	aa350-362
Reactivity:	Human
Purification:	Protein G purified
Presentation:	PBS, 0.2% gelatin, 0.05% sodium azide.
Recommended Storage:	Short term 4°C, long term aliquot and store at -20°C, avoid freeze thaw cycles.
Usage Summary:	Immunohistochemistry: LS-B2023 was validated for use in immunohistochemistry on a panel of 21 formalin-fixed, paraffin-embedded (FFPE) human tissues after heat induced antigen retrieval in pH 6.0 citrate buffer. After incubation with the primary antibody, slides were incubated with biotinylated secondary antibody, followed by alkaline phosphatase-streptavidin and chromogen. The stained slides were evaluated by a pathologist to confirm staining specificity. The optimal working concentration for LS-B2023 was determined to be 5 ug/ml.
Uses:	IHC - Paraffin (5 µg/ml), Western blot (1 - 2 µg/ml), Flow Cytometry (Optimal dilution to be determined by the researcher)
Size:	50 µg
Concentration:	0.5 mg/ml

Immunohistochemistry Image:



Anti-CCR10 antibody IHC of human liver. Immunohistochemistry of formalin-fixed, paraffin-embedded tissue after heat-induced antigen retrieval. Antibody LS-B2023 concentration 5 ug/ml.

Western Blot Image:



Western blot analysis for CCR10 using antibody at 2 μ g/ml dilution against 10 ug of MCF-7 (a human breast cancer cell line) cell lysate.

Requested From:

Japan

Laboratory Reagent For In Vitro Research Use Only

Not for resale without prior written consent from LifeSpan BioSciences, Inc.

Created on 9/23/2014

© 2014 LifeSpan BioSciences