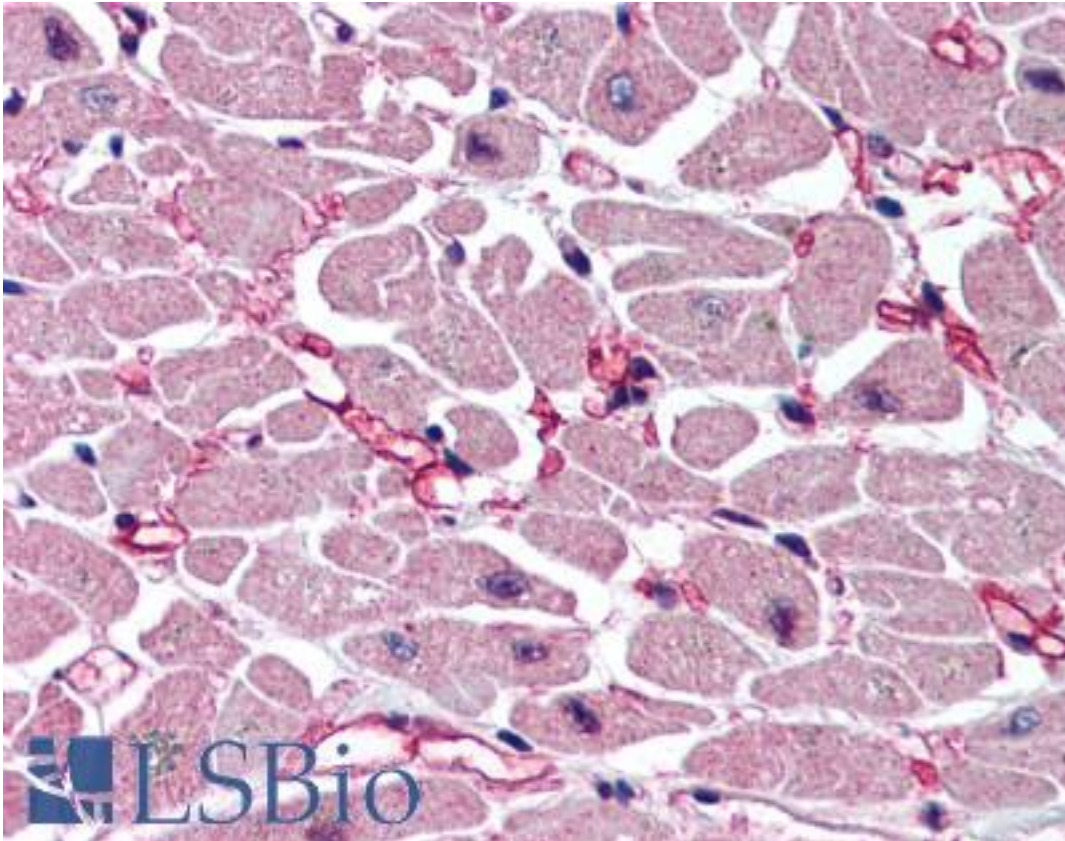


CASP9 / Caspase 9 Rabbit anti-Rat Polyclonal (aa345-359) Antibody - LS-B2021 - LSBio

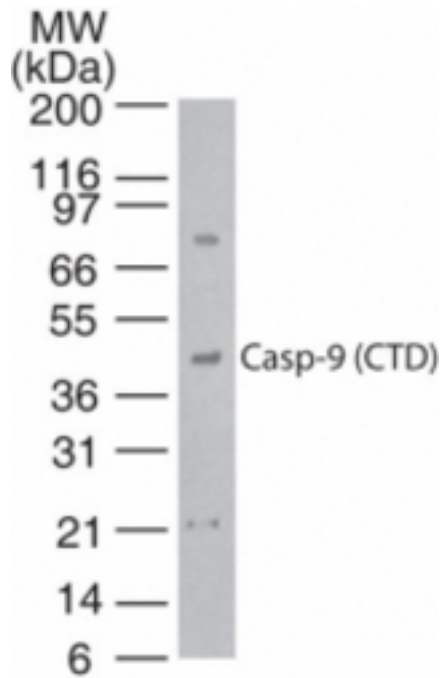
CatalogID:	LS-B2021
Validation:	This antibody replaces catalog number LS-C647. It has been validated for use in the following assays: IHC-P.
Target:	caspase 9, apoptosis-related cysteine peptidase (CASP9)
Synonyms:	CASP9 Antibody, APAF3 Antibody, CASPASE-9c Antibody, ICE-LAP6 Antibody, MCH6 Antibody, ICE-like apoptotic protease 6 Antibody, APAF-3 Antibody, Apoptotic protease Mch-6 Antibody, CASP-9 Antibody, Caspase 9 Antibody, Caspase-9 Antibody, PPP1R56 Antibody
Family / Subfamily:	Protease / Cysteine C14
Host	CASP9 antibody was produced in Rabbit
Clonality:	Polyclonal
Isotype:	IgG
Immunogen Species:	CASP9 / Caspase 9 antibody was raised against Rat
Antigen Type:	Synthetic peptide
Immunogen:	CASP9 / Caspase 9 antibody was raised against a mixture of synthetic peptides corresponding to amino acids 345-359 (CLFPSPPQSLTASMG) and 366-383 (GTRHWYMYRTSTSTPPKA) of rat Caspase-9 (CTD). Percent identity by BLAST analysis: Rat (100%).
Specificity:	A mixture of synthetic peptides corresponding to amino acids 345-359 and 366-383 of rat Caspase-9-CTD.
Epitope:	aa345-359
Reactivity:	Rat, Human
Purification:	Protein G purified
Presentation:	PBS, 0.05% BSA, 0.05% sodium azide
Recommended Storage:	Short term 4°C, long term aliquot and store at -20°C, avoid freeze thaw cycles.
Usage Summary:	Immunohistochemistry: LS-B2021 was validated for use in immunohistochemistry on a panel of 21 formalin-fixed, paraffin-embedded (FFPE) human tissues after heat induced antigen retrieval in pH 6.0 citrate buffer. After incubation with the primary antibody, slides were incubated with biotinylated secondary antibody, followed by alkaline phosphatase-streptavidin and chromogen. The stained slides were evaluated by a pathologist to confirm staining specificity. The optimal working dilution for LS-B2021 was determined to be 1:200.
Uses:	IHC - Paraffin (1:200) & (5 µg/ml), Western blot (1 - 2 µg/ml) (Optimal dilution to be determined by the researcher)
Size:	100 µl

Immunohistochemistry Image:



Anti-Caspase 9 antibody IHC of human heart. Immunohistochemistry of formalin-fixed, paraffin-embedded tissue after heat-induced antigen retrieval. Antibody LS-B2021 concentration 5 ug/ml.

Western Blot Image:



Western blot of 20 ug of whole cell lysate from HeLa cells with antibody at 1 ug/ml dilution.

Requested From:

Japan

Laboratory Reagent For In Vitro Research Use Only

Not for resale without prior written consent from LifeSpan BioSciences, Inc.

Created on 9/23/2014

© 2014 LifeSpan BioSciences