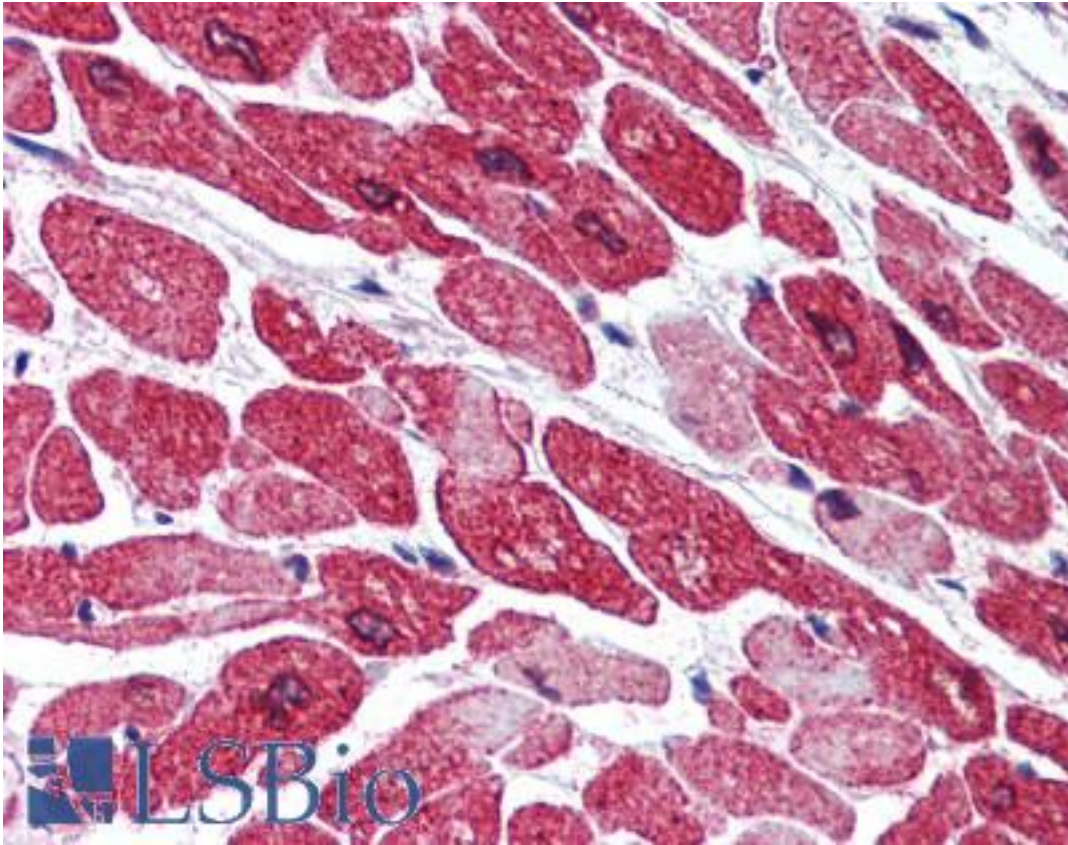


KDM1A / LSD1 Rabbit anti-Human Polyclonal (aa100-150) Antibody - LS-B2014 - LSBio

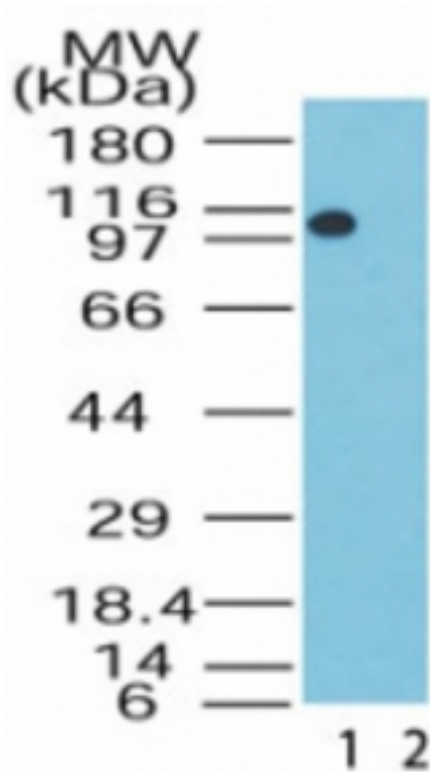
CatalogID:	LS-B2014
Validation:	This antibody replaces catalog number LS-C19411. It has been validated for use in the following assays: IHC-P.
Target:	lysine (K)-specific demethylase 1A (KDM1A)
Synonyms:	KDM1A Antibody, BHC110 Antibody, KDM1 Antibody, LSD1 Antibody, AOF2 Antibody, KIAA0601 Antibody
Host	KDM1A antibody was produced in Rabbit
Clonality:	Polyclonal
Immunogen Species:	KDM1A / LSD1 antibody was raised against Human
Specificity:	A portion of amino acids 100-150 of human LSD1 was used as the immunogen.
Epitope:	aa100-150
Reactivity:	Human, Monkey, Mouse, Rat, Dog, Zebrafish, Macaque
Purification:	Immunoaffinity purified
Presentation:	PBS, 0.2% gelatin, 0.05% sodium azide.
Recommended Storage:	Store at 4°C for short term applications. For long term storage, aliquot and store at -20°C.
Usage Summary:	Immunohistochemistry: LS-B2014 was validated for use in immunohistochemistry on a panel of 21 formalin-fixed, paraffin-embedded (FFPE) human tissues after heat induced antigen retrieval in pH 6.0 citrate buffer. After incubation with the primary antibody, slides were incubated with biotinylated secondary antibody, followed by alkaline phosphatase-streptavidin and chromogen. The stained slides were evaluated by a pathologist to confirm staining specificity. The optimal working concentration for LS-B2014 was determined to be 5 ug/ml.
Uses:	IHC - Paraffin (5 µg/ml), Western blot (0.5 - 2 µg/ml) (Optimal dilution to be determined by the researcher)
Size:	50 µg
Concentration:	0.5 mg/ml

Immunohistochemistry Image:



Anti-KDM1A / LSD1 antibody IHC of human heart. Immunohistochemistry of formalin-fixed, paraffin-embedded tissue after heat-induced antigen retrieval. Antibody LS-B2014 concentration 5 ug/ml.

Western Blot Image:



Western blot of LSD1 in the 1) absence and 2) presence of immunizing peptide in human brain lysate using antibody at 0.5 ug/ml.

Requested From:

Japan

Laboratory Reagent For In Vitro Research Use Only

Not for resale without prior written consent from LifeSpan BioSciences, Inc.

Created on 9/23/2014

© 2014 LifeSpan BioSciences