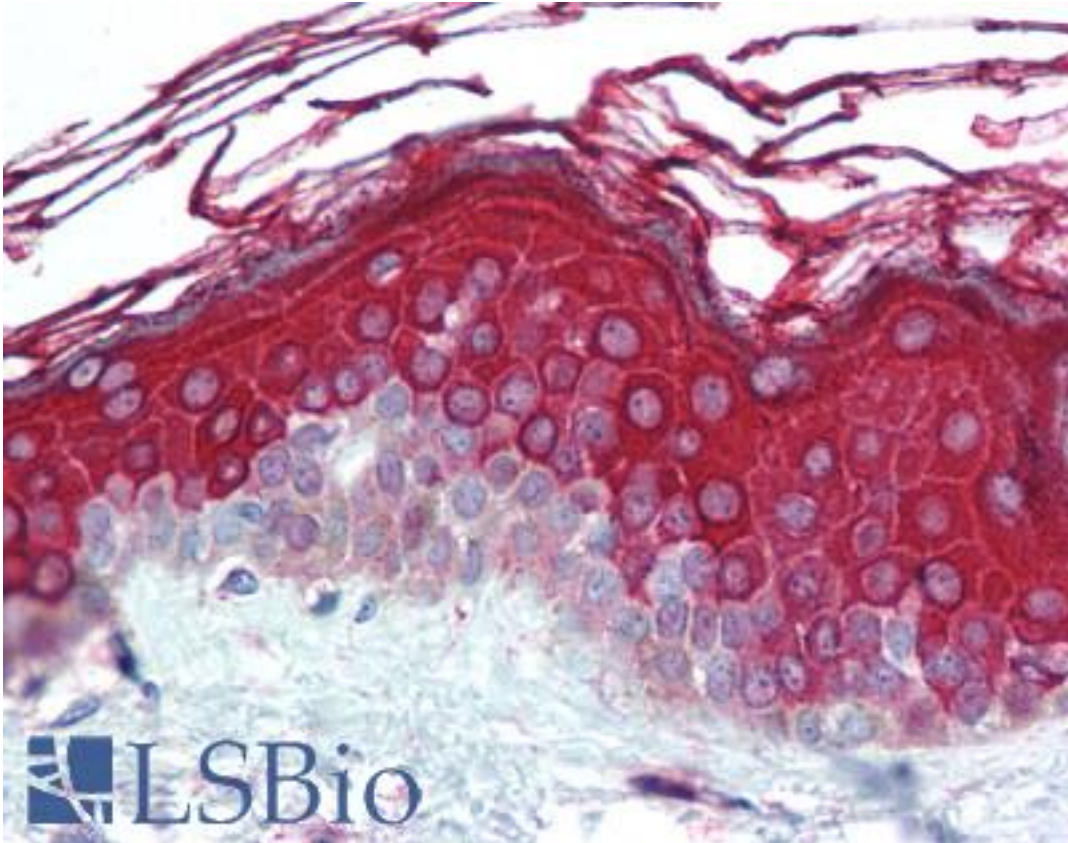


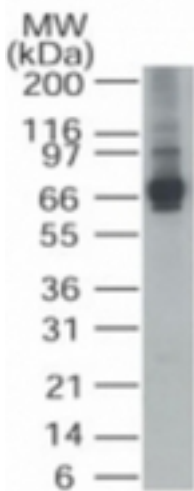
ALAS1 Rabbit anti-Human Polyclonal (aa480-530) Antibody - LS-B2013 - LSBio	
CatalogID:	LS-B2013
Validation:	This antibody replaces catalog number LS-C622. It has been validated for use in the following assays: IHC-P.
Target:	aminolevulinate, delta-, synthase 1 (ALAS1)
Synonyms:	ALAS1 Antibody, ALAS Antibody, ALAS-H Antibody, ALAS3 Antibody, ALASH Antibody, Delta-ALA synthase 1 Antibody, MIG4 Antibody, Migration-inducing protein 4 Antibody
Host	ALAS1 antibody was produced in Rabbit
Clonality:	Polyclonal
Isotype:	IgG
Immunogen Species:	ALAS1 antibody was raised against Human
Antigen Type:	Synthetic peptide
Immunogen:	ALAS1 antibody was raised against synthetic peptide from human ALAS1.
Specificity:	A portion of amino acids 480-530 of human ALAS-1 was used as the immunogen.
Epitope:	aa480-530
Reactivity:	Human
Purification:	Protein G purified
Presentation:	PBS, 0.05% BSA, 0.05% sodium azide
Recommended Storage:	Store at 4°C for short term applications. For long term storage, aliquot and store at -20°C.
Usage Summary:	Immunohistochemistry: LS-B2013 was validated for use in immunohistochemistry on a panel of 21 formalin-fixed, paraffin-embedded (FFPE) human tissues after heat induced antigen retrieval in pH 6.0 citrate buffer. After incubation with the primary antibody, slides were incubated with biotinylated secondary antibody, followed by alkaline phosphatase-streptavidin and chromogen. The stained slides were evaluated by a pathologist to confirm staining specificity. The optimal working concentration for LS-B2013 was determined to be 5 ug/ml.
Uses:	IHC - Paraffin (5 µg/ml), Western blot (1 - 3 µg/ml) (Optimal dilution to be determined by the researcher)
Size:	50 µg
Concentration:	0.5 mg/ml

Immunohistochemistry Image:



Anti-ALAS1 antibody IHC of human skin. Immunohistochemistry of formalin-fixed, paraffin-embedded tissue after heat-induced antigen retrieval. Antibody LS-B2013 concentration 5 ug/ml.

Western Blot Image:



Western blot of ALAS-1 in HepG2 cell lysate using antibody at 1 ug/ml.

Requested From:	Japan
Laboratory Reagent For In Vitro Research Use Only	
Not for resale without prior written consent from LifeSpan BioSciences, Inc.	
Created on 9/23/2014	
© 2014 LifeSpan BioSciences	