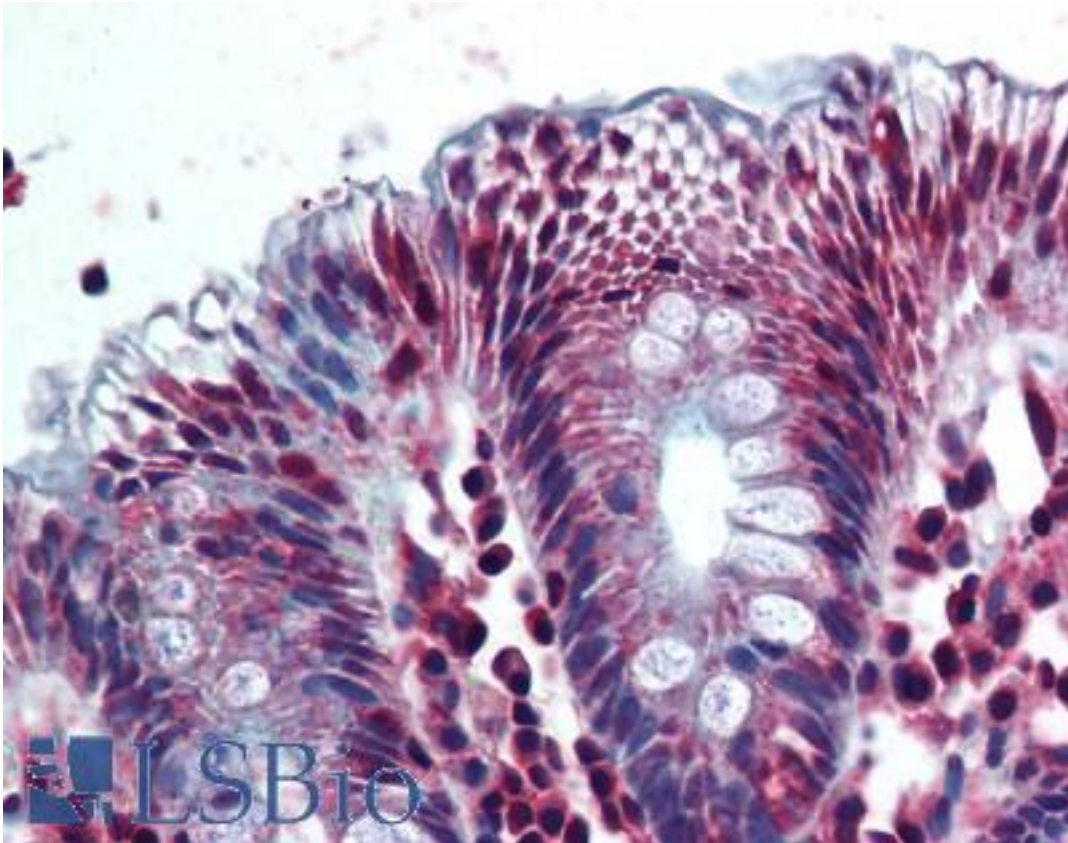


AKR1B10 Rabbit anti-Human Polyclonal (aa100-200) Antibody - LS-B2012 - LSBio

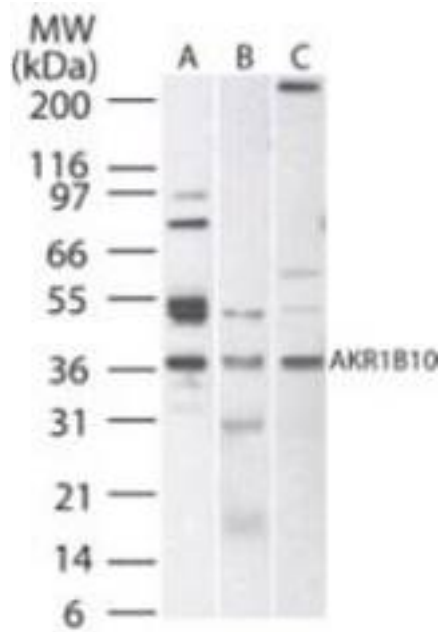
CatalogID:	LS-B2012
Validation:	This antibody replaces catalog number LS-C19384. It has been validated for use in the following assays: IHC-P.
Target:	aldo-keto reductase family 1, member B10 (aldose reductase) (AKR1B10)
Synonyms:	AKR1B10 Antibody, AKR1B11 Antibody, Aldose reductase-like peptide Antibody, ALDRLn Antibody, AKR1B12 Antibody, Aldose reductase-like Antibody, Aldose reductase-like 1 Antibody, ARP Antibody, HARP Antibody, HSI Antibody, Small intestine reductase Antibody, ARL-1 Antibody, SI reductase Antibody
Host	AKR1B10 antibody was produced in Rabbit
Clonality:	Polyclonal
Immunogen Species:	AKR1B10 antibody was raised against Human
Immunogen:	AKR1B10 antibody was raised against a peptide within amino acids 100-200 of human AKR1B10 protein.
Specificity:	A portion of amino acids 100-200 of human AKR1B10 protein was used as the immunogen.
Epitope:	aa100-200
Reactivity:	Human, Mouse, Rat
Purification:	Protein G purified
Presentation:	PBS, 0.2% gelatin, 0.05% sodium azide.
Recommended Storage:	Store at 4°C for short term applications. For long term storage, aliquot and store at -20°C.
Usage Summary:	Immunohistochemistry: LS-B2012 was validated for use in immunohistochemistry on a panel of 21 formalin-fixed, paraffin-embedded (FFPE) human tissues after heat induced antigen retrieval in pH 6.0 citrate buffer. After incubation with the primary antibody, slides were incubated with biotinylated secondary antibody, followed by alkaline phosphatase-streptavidin and chromogen. The stained slides were evaluated by a pathologist to confirm staining specificity. The optimal working concentration for LS-B2012 was determined to be 10 ug/ml.
Uses:	IHC - Paraffin (10 µg/ml), Western blot (1 - 3 µg/ml) (Optimal dilution to be determined by the researcher)
Size:	50 µg
Concentration:	0.5 mg/ml

Immunohistochemistry Image:



Anti-AKR1B10 antibody IHC of human colon. Immunohistochemistry of formalin-fixed, paraffin-embedded tissue after heat-induced antigen retrieval. Antibody LS-B2012 concentration 10 ug/ml.

Western Blot Image:



Western blot of AKR1B10 in A) human, B) mouse, and C) rat liver tissue lysate using LS-B2012 at 1 ug/ml.

Requested From:

Japan

Laboratory Reagent For In Vitro Research Use Only

Not for resale without prior written consent from LifeSpan BioSciences, Inc.

Created on 9/23/2014

© 2014 LifeSpan BioSciences